



Stride S3 Line

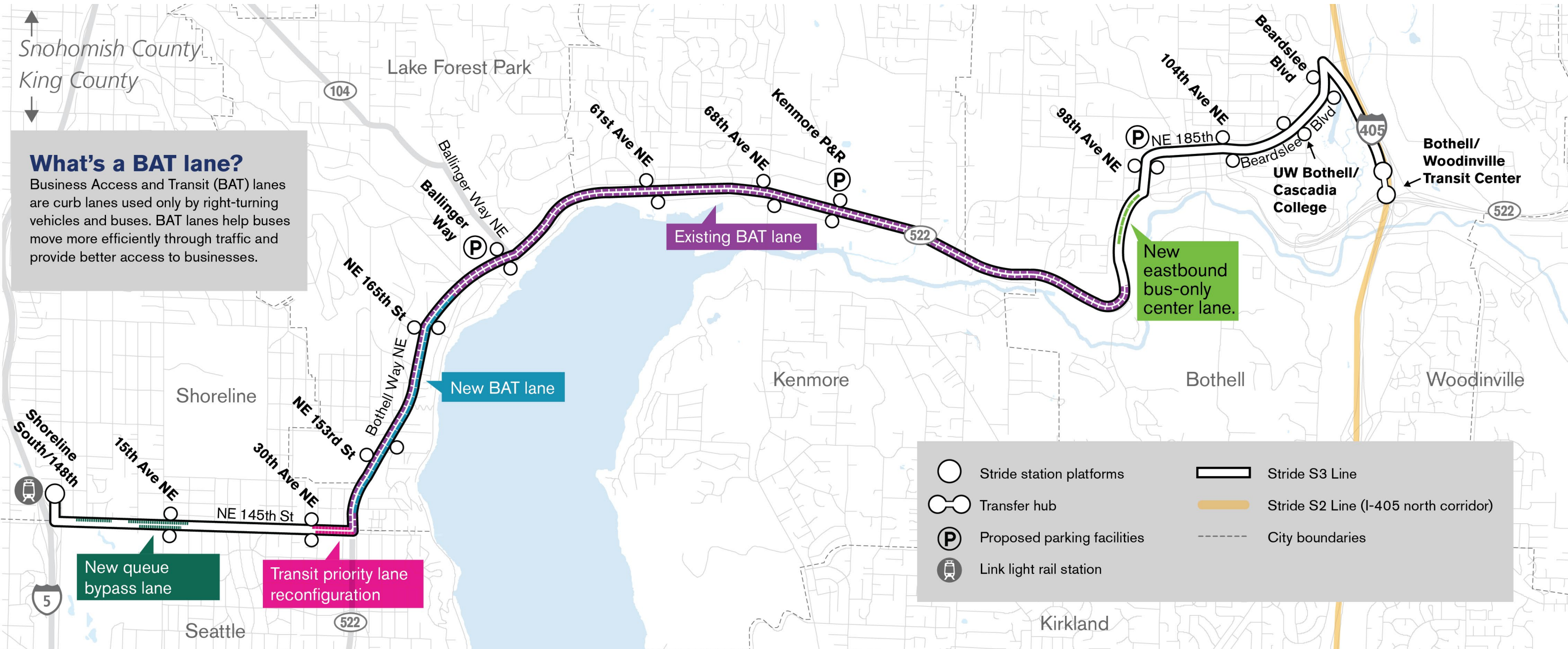
Bus rapid transit: Shoreline—Bothell

Fast, frequent, and reliable bus service is coming to north Lake Washington

In November 2016, voters approved the ST3 plan, which included the Stride bus rapid transit (BRT) system. Buses will run every 10-15 minutes, 17+ hours a day between South Shoreline and Bothell. Riders may transfer between the Stride S3 Line, Link light rail, and other regional transit services. We estimate a 34.5-minute trip between downtown Bothell and the South Shoreline/148th Station.



Stride S3 Line: Shoreline–Bothell



What's a BAT lane?
 Business Access and Transit (BAT) lanes are curb lanes used only by right-turning vehicles and buses. BAT lanes help buses move more efficiently through traffic and provide better access to businesses.

	Stride station platforms		Stride S3 Line
	Transfer hub		Stride S2 Line (I-405 north corridor)
	Proposed parking facilities		City boundaries
	Link light rail station		

Stride S3 Line station locations

Seattle/Shoreline

Three Stride stations: Shoreline South/148th, 15th Ave NE, and 30th Ave NE.

Lake Forest Park

Three Stride stations: NE 153rd St, NE 165th St, and Ballinger Way (next to the Lake Forest Park Town Center).

Kenmore

Three Stride stations: 61st Ave NE, 68th Ave NE, and Kenmore Park-and-Ride.

Bothell

Five Stride stations: 98th Ave NE, 104th Ave NE, UW Bothell/Cascadia College, Beardslee Blvd, and Bothell/Woodinville Transit Center (constructed by WSDOT).

Improvements include:

New business access and transit BAT lanes, improvements at intersections with signals to allow buses to enter traffic flow in a priority position over general traffic, and other transit priority lane configurations in Seattle/Shoreline, Lake Forest Park, and Bothell. New sidewalks, Americans with Disability Act (ADA) ramps and other intersection improvements in Seattle/Shoreline, Lake Forest Park, Kenmore, and Bothell.

Project parking

The Sound Transit Board adopted a realignment plan on Aug. 5, 2021, that will serve as a framework for delivering agency system expansions as rapidly as possible. To prioritize providing transit

service, new parking in Kenmore and Bothell is now scheduled for 2034, and new parking in Lake Forest Park is scheduled for 2044.

Woodinville service connection

Separate from the Stride S3 Line, a new ST Express route serving Woodinville will connect transit riders to the Stride S2 and S3 lines at the Bothell/Woodinville Transit Center in Bothell. During peak hours, it will also travel in the I-405 express toll lanes to the Bellevue Transit Center, where riders can connect to Link light rail.

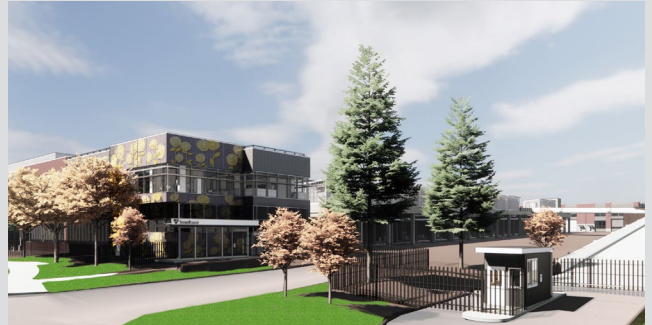
To learn more and subscribe to updates:
soundtransit.org/stride

Project timeline



Construction schedule

Sound Transit will develop the construction schedule after contractors are selected. This schedule will indicate specific property owner and tenant needs, traffic mitigation measures, and estimated timelines for project construction. We anticipate starting construction in 2025 and ending by 2028. Construction will occur in phases throughout the project area for two to three years.



Bus Operations and Maintenance Facility

Located in Bothell, the Bus Operations and Maintenance Facility will support the operations of the Stride BRT system. Stride buses will be stored, cleaned, fueled or charged, and maintained at the facility.



Electric bus fleet

S3 will operate with a fleet of battery-electric buses, allowing for quieter and cleaner operations along the entire corridor. Buses will charge while laying over at both ends of the route and overnight at the base.

Passenger Care

8 a.m.–6 p.m. Monday–Friday
888-889-6368 / TTY 711

Servicio al Cliente 客户服务
dịch vụ khách hàng 고객 서비스

Questions?

Contact Community Engagement:

brt@soundtransit.org or 206-556-5277

Learn more about the project
and subscribe to email updates:



soundtransit.org/stride

401 S. Jackson St.,
Seattle, WA 98104

800-201-4900 / TTY: 711

Email: main@soundtransit.org

Website: soundtransit.org

Information in alternative formats:

800-201-4900 / TTY: 711

Email: accessibility@soundtransit.org

Follow us:

