

Neil Jeffares, *Dictionary of pastellists before 1800*

Online edition

NB: This article is divided into the following pdfs:

- Part I: [Essays and autoportraits](#)
- **Part II: [Named sitters A–E](#)**
- Part III: [Named sitters F–L](#)
- Part IV: [Named sitters M–R](#)
- Part V: [Named sitters S–Z](#)
- Part VI: [Unidentified sitters etc.](#)

Follow the hyperlinks for the remaining sections.

LIOTARD, Jean-Étienne

Geneva 1702–1789

Part II: Named sitters A–E

J.49.1044 Madame ADÉLAÏDE (1732–1800), ??Madame Sophie, pstl/pchm, 59x49, 1749–50, ?Salon de Saint-Luc 1752, no. 61 (Stupinigi. *Olim* Castello di Colorno). Lit.: duc de Luynes, .X.1749; L&R 111 repr.; Roethlisberger 1986, fig. 5; R&L 171, fig. 282; Salmon 2024, fig. 427 φ



~cop., m/u [pnt.], 59.6x48.7 (Versailles, *magazin*, 1784, inv. 600). Lit.: Durameau 1784, III, p. 29, no. 85

J.49.1046 ~cop., pstl, 59.4x48.6 (Liotard; seen Zinzendorf, 7.X.1764; liste d'Angiviller, no. 47 ("D'après Liotard bon Dieu" – Pierre); inv. p.m. 1789, no. 129). Lit.: L&R, *s.no.* 110 n.r.; Loche 1980, p. 196n.r., a/r Liotard; R&L p. 380

~cop., pnt., 60.5x50, c.1750 (Köln, *Sammlung-Rau*, inv. GR 1.1015. Marquis de Lastic, Paris, 1976. *Galerie Heim*, Paris, cat. 1979, no. 17. *Blanche Tézé*, New York, 1980; London, Sotheby's, 21.IV.1982, Lot 35. Zurich, Koller, 15.IX.1994, Lot 45 repr.). Lit.: L&R 112 repr., as pstl; R&L p. 380

~cop., pnt., 51x44 ov. (Florence, *Galleria Palatina*, inv. 262–65, with dauphine and Mmes Adélaïde, Henriette, Sophie) Lit.: R&L p. 379, fig. 301

~cop., pnt., 59x49.5 (Paris, *Drouot*, 27.V.2001, Lot 101). Lit.: R&L p. 380 n.r.

~cop., pnt., 60x50 (acqu. 2005, PC). Exh.: Versailles 2019, no. 7 repr.

~cop. [Louis-Michel] Le Brun, min., rect. (comm. *famille royale*, 300 livres, 21.IV.1751). Lit.: Vaillat 1912, p. 184

~version, min., *Carnet royal*, right leaf, upper left. Lit.: Herdt 2003, p. 90 repr.; Hugues 2004, p. 70 n.r., Madame Adélaïde, ??Madame Sophie; R&L 185, fig. 310

Madame Adélaïde, v.q. Madame Sophie

J.49.105 Charlotte-Élisabeth Aïcha, dite Mlle AÏSSÉ (c.1695–1733), m/u (Pierre-Antoine de La

Place (1707–1793) 1792). Lit.: M. de La Place, *Le Valère-Maxime françois*, Paris, 1792, p. 265, "le portrait original de cette intéressante Aïssé, peint par Liotard, est actuellement dans le cabinet de l'auteur" [cf. Coypel]

J.49.1053 George Keppel, 3rd Earl of ALBEMARLE (1724–1772), KG, general, pstl/pchm, 65.4x53.3, inscr. *verso* "Milord Comte d'Albermale/peint en crayon au pastel 1768 par J.E.Liotard/on prie de ne point toucher a la peinture/ny aucun coup de Marteau" (the sitter; don: General John Hale (1728–1806), his military secretary in Cuba; desc. Miss Anne Hale; London, Sotheby's, 27.VII.1978, Lot 166 repr., as a/r Liotard, £4000; William Drummond, *Exhibition of portraits and figures*, c.1980, no. 45, repr.; adv., *Burlington magazine*, CXXIX/1014, .IX.1987, p. 54 repr.; London, Sotheby's, 9.XII.1992, Lot 77 repr. Lowell Libson 2016). Exh.: Liotard 2023, fig. 39, 40. Lit.: Roethlisberger 1988, fig. 7; R&L 432, fig. 625, all as of 3rd Earl; Jeffares 2009, as ?of 2nd Earl [?]; Roethlisberger 2014, p. 187 n.r. [although subject does not resemble the 3rd Earl in Cotes or Reynolds portraits, his service in West Indies affected his health and he was in South of France early 1768] φσ



Photo courtesy owner

J.49.1054 ~repl., pstl/pchm, 63x52.5 (Corbas, Berard Peron, 17.IX.2022, Lot 7 repr., as inconnu, chevalier de Saint-André, *Éc. russe XIX^e siècle*, est. €800–1000; revised before sale, est. €4–6000, €3200) [new attr. 22.VII.2022] φψ



~version, in green coat, enamel (Duke of Bedford, Woburn). Lit.: R&L 433, fig. 626

J.49.1057 Il conte Francesco ALGAROTTI (1712–1764), pstl/pchm, 41x31.5, c.1745, inscr. *verso* "Le Comte Algarotti peint par Liotard" (Rijksmuseum SK-A-234. Liotard; inv. p.m. 1789, no. 150; J.-E. Liotard-Crommelin; Mlle M. A. Liotard, Amsterdam, legs 1873). Exh.:

Paris 1948d, no. 3 repr.; Geneva 1948, no. 10 repr.; Liotard 2002b, fig. 20. Lit.: Paul Seidel, "Pastellbildnis des Grafen Francesco Algarotti", *Jahrbuch der königlich preussischen Kunstsammlungen*, XV/2, 1894, pp. 122–24 repr.; Humbert, Revilliod & Tilanus 1897, no. 23, repr. p. 110; Santifaller 1976; Thiel 1976; L&R 77 repr. cl. pl. XVI; Roettgen 2003, Abb. 1-27; R&L 136, fig. 235; Sauvage 2015, fig. 9 (detail) φσ



Photo courtesy Rijksmuseum

J.49.106 ~repl., pstl/pchm, 40.5x31.5 (Utrecht, Huis Doorn, inv. 1716. Le sujet; desc.; acqu. Kaiser Wilhelm II, Berlin; exiled 1919; visible in Kaiser's Werkkamer, Huis Doorn photo 1933; confiscated 1952). Exh.: Liotard 2015a, no. 63 repr., as on vellum; Liotard 2018, no. 8 & p. 47 repr. Lit.: P. Seidel, "Pastellbildnis des Grafen Francesco Algarotti von Jean-Etienne Liotard", *Jahrbuch der königlich preussischen Kunstsammlungen*, 1894, xv, pp. 122–24 repr.; Humbert, Revilliod & Tilanus 1897, no. 23 n.r.; Brieger 1921, p. 115 repr.; Lunsingh Scheurleer 1977, p. 22 repr.; L&R 78 n.r.; R&L 135, fig. 234, as on ppr φσ



~grav. R. Morghen for Algarotti, *Opere*, Venice, 1791. Lit.: R&L p. 337, fig. 239

~grav. Gio. Boggi, 1823

~cop., pnt., 66x47, ?c.1770 (Rome, Museo di Roma, Palazzo Braschi, inv. Dep. Arc 165). Lit.: R&L 337 n.r.

~cop., pnt. (Venice, Museo Correr). Lit.: Mazza Boccazzi 2009, p. 159, fig. 1, as autograph

J.49.1061 ~cop., S. Combs, 54x40, sd 2013 (Soissons, Bruce Roelens, 14.XII.2024, Lot 118 repr., est. €100–150) φκ

J.49.1066 Princess AMELIA (1711–1786), in profile, with an ermine cloak, pearls in her hair, pstl, 62.2x53.4, c.1754 (Stansted Park, inv. SPF 176.

[?Rochampton, 1785, Musgrave's lists – not verified]). Lit.: Humbert, Revilliod & Tilanus 1897, no. 20 n.r., as a/r pnt. given by sitter to Earl of Bessborough 1774; Bessborough 1958, p. 119 n.r.; Bessborough & Aslet 1984, p. 142; repr. p. 105; L&R 304 n.r.; R&L 276, fig. 408 φ



~dessin (Tilanus. PC). Lit.: R&L p. 448, fig. 409

J.49.1069 Frau von der ASSEBURG, née Johanne Salomé von Diest, Gräfin zu Sayn-Wittgenstein-Homburg (1724–1761), pstl/pchm, 66x55, 1748 (Braunschweig, Herzog Anton Ulrich-Museum, inv. 161. Desc.: Schloß Neindorf; Baron von Myern, Magdeburg; don 1832). Exh.: Braunschweig 1975, no. 27 repr. Lit.: Adriani 1969, p. 89; L&R 75 repr.; R. Klessmann, *Herzog Anton Ulrich-Museum Braunschweig*, Munich, 1978, p. 134 repr.; Jacoby 1987, fig. 1; R&L 168, fig. 280 φ



~cop., pnt. (Neindorf). Lit.: R&L p. 374 n.r.

J.49.1072 Countess of ATHLONE, née Louise-Isabelle-Hermeline van Wassenaer van Duivenvoorde (1719–1756), ∞ Frederik Willem van Reede, 4th Earl, pstl/pchm, 61x50, sd ← “Liotard/1756” (comm. 1756; van Reede van Athlone; desc. van Aldenburg Bentinck, Kasteel Amerongen, Utrecht). Exh.: Utrecht 1938, no. 308; Rotterdam 1946, no. 28 n.r.; Liotard 1985, no. 42 repr. Lit.: Staring 1947, pl. 15; L&R 192 repr.; R&L 338, fig. 482 φ



Frederik Christiaan Reinhard van Reede, 5th Earl of ATHLONE, Heer van Amerongen en Middachten (Kasteel Amerongen) [v. Charrière, 1.22.104]

J.49.1075 Countess of ATHLONE, née Anna Elisabeth Christina van Tuyll van Serooskerken (1745–1819), ∞ 5th Earl, pstl/pchm, 63x50, 1772 (van Aldenburg Bentinck, Kasteel Amerongen). Exh.: Rotterdam 1946, no. 30 n.r.; Liotard 1985, no. 44a n.r. Lit.: Moes 1897–1905, II, no. 8118/2; Godet 1906, I, p. 194 repr.; L&R 289 repr.; Goes & de Mayere 1996, p. 96 repr., as autograph; R&L 484, fig. 684 φ



J.49.1077 ~version, pstl/pchm, 67.5x55, 1772 (Slot Zuylen, inv. S67/I.B. 35345). Exh.: Paris 1961, no. 21 repr.; Liotard 1985, no. 44 repr. Lit.: Moes 1897–1905, II, no. 8118/1; L&R 288 repr.; Grijzenhout 1985a, no. 44, repr. p. 188; Goes & de Mayere 1996, no. 21, repr. pp. 43, 95, 114, anon. cop.; R&L 483, fig. 683; Jeffares 2017b, fig. 35b φ



Athlone, v.q. Heiden

J.49.108 AUGUSTA, Princess of Wales, née von Sachsen-Gotha (1719–1792), pstl/pchm, 64.8x51.4, 1754 (Royal Collection inv. RCIN 400892. Comm. Augusta, Princess of Wales, 1754; Buckingham House 1783). Exh.: London 2004, no. 2 repr.; Liotard 2015a, no. 27 repr.; New Haven 2017, no. 9.05 [London only], fig. 1.03. Lit.: Walpole 1928, p. 79, “extremely like, but the body very flat”; Kerslake 1977, II, pl. 33; Trivas 1936b, pl. IA repr.; Millar 1963, no. 578 repr. clr.; Plumb & Weldon 1977, p. 193 repr.; L&R 174 repr.; R&L 247, fig. 369; *Apollo*, v.2017, p. 102 repr.; Michael Hall, *Art, passion & power*, 2017, fig. 155; Liotard 2023, fig. 41; Baker 2023, fig. 22 φσ



~cop., head, min./pchm (Hamburg, Heberle, 27.III.1905, Lot 387). Lit.: R&L p. 433 n.r.

~cop., attr. Clara Leigh, min. (Royal Collection). Lit.: Walker 1992, no. 248 repr.; R&L p. 433 n.r.

~cop., pnt., fanciful costume (Madrid, Fundación Lázaro Galdiano). Lit.: Kerslake 1977, II, pl. 35

~cop., pnt., updated costume etc. (National Trust, Hartwell House)

~cop., pnt., updated costume etc. (London, Sotheby's, 19.I.2017, Lot 246)

J.49.1084 AUGUSTE Herzogin von Braunschweig-Wolfenbüttel, née Princess of Wales (1737–1813), pstl/pchm, 39x30, 1754 (Royal Collection inv.RCIN 400896). Lit.: Trivas 1936b, pl. IC repr.; Millar 1963, no. 580 repr.; L&R 176 repr.; R&L 249, fig. 371 φ



J.49.1086 ?Miss BACON, pstl/pchm, 55x41, 1753–54, inscr. verso “Miss Bacon” (late 19th century English sale; acqu. Sir Hickman Bacon; desc., Ravingham Hall, Norfolk; UK PC). Exh.: Liotard 2015a, no. 35 repr. Lit.: Duleep Singh 1928, II, p. 189, no. 29 n.r., anon., Miss Bacon; L&R 152 repr.; R&L 269, fig. 397, as of ?Miss Bacon [composition same as Lady Egremont] φδσ



Photo courtesy owner

~ v.q. Countess of Egremont *infra Baldauf, v. Dietrichstein*

J.49.1091 Lady Egerton, daughter of the Duchess of Bridgewater [?Lady BALTIMORE, née Lady

Diana Egerton (1731–1758)], pstl, 1750 (Sir John Ramsden, Cambridge, c.1931). Lit.: Clément 1755, II, p. 339, Paris, 1.IX.1752; L&R 122; R&L 234 n.r.

J.49.1092 L'évêque Banchieri [Giovanni Francesco BANCHIERI (1694–1763), cardinal 1753], pstl, Rome, 1736. Lit.: L&R 17; R&L 53 n.r., citing autobiographie; Roethlisberger 2014, p. 198 n.r.

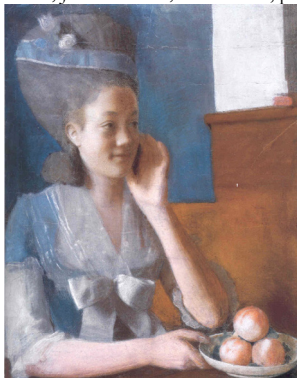
J.49.1093 ≠man in blue costume with black hood, head and shoulders, pstl, 39.3x29.7 (New York, Parke Bernet, 11–22.I.1969, Lot 6; 30.IV.1970, Lot 36). Lit.: L&R 17 n.r., as ?Liotard, Bincheri; R&L, s.no. 53 n.r., ??

J.49.1094 Mme François de BASSOMPIERRE, née Marie-Jeanne “Mariette” Liotard (1761–1813), jouant aux échecs à la chandelle avec un abbé, pstl, 44.6x59.6, 1779 (Liotard; lettre 4.VI.1782; liste d'Angiviller 1785, no. 75 (“du Liotard a la lumiere d'une chandelle” – Pierre); inv. p.m. 1789, no. 151). Lit.: L&R 325 n.r.; Loche 1980, p. 203; R&L 530

~dessin, trois crayons/ppr bl. (Basel PC 1978). Lit.: L&R 325¹ repr.; R&L p. 654, fig. 746

Basset de La Marrelle, v. La Morelli

J.49.1096 Marie-Jeanne de BASSOMPIERRE, le visage de ¾ vers la dr., une pointe de mousseline sur la poitrine, tenant une assiette de pêches, pstl/ppr, 69x55, 1779 (Geneva, mAH, D 1998-501. Desc. famille Bassompierre-Vignier: Charles Vignier, Le Havre, 1897. [Camille Groult; Paris, Georges Petit, 21–22.VI.1920, Lot 21 n.r., inconnue, est. fr6000, fr7600.] Baron Edmond de Rothschild; legs 1998). Lit.: Humbert, Revilliod & Tilanus 1897, no. 106 n.r., une des filles de l'artiste; L&R 333 sketch repr.; Liotard 2002a, p. 39 repr.; Liotard 2006, p. 43 repr.; R&L 531, fig. 749; Jeffares 2009; Koos 2014, p. 182 repr. φσ



J.49.1098 Marie-Jeanne de BASSOMPIERRE, pstl/ppr, 22.5x17.5, 1780 (Liotard; J.-E. Liotard-Crommelin; Mlle M. A. Liotard, Amsterdam; J. W. R. Tilanus; C. B. Tilanus; [?Amsterdam, 23.X.1934]/Laurent Rehfous, Geneva; Jacques Salmanowitz, Geneva; PC 2008). Exh.: Paris 1948d, no. 33; Geneva 1948, no. 57. Lit.: Humbert, Revilliod & Tilanus 1897, no. 105 n.r.; L&R 326 repr.; R&L 537, fig. 753 φ



Johann Freiherr von BECHARD & pendant: épouse, née Marianne Freiin von Tinti, 2 pstls par la nièce de Bechard, corrigés par Liotard, v. Sauches

J.49.1103 Mrs BELIN [illegible], m/u (Roehampton, 1785, Musgrave's lists)

J.49.1104 Willem Rijksgraaf BENTINCK, heer van Rhoon (1704–1774), pendrecht en Terrington, buitengewoon gezant, stadhouder van de Leenen van Holland en Westfriesland, pstl/pchm, 59.5x49.5, sd ✓ “peint par/J. E. Liotard/1755” (comm. Prinses Anna van Oranje-Nassau, D/f577½ with pendant, Ludwig Ernst von Braunschweig; W. G. F. Bentinck van Rhoon (1762–1835); baronne van Nagell, née Ottoline Frederika Louise Bentinck (1793–1860); Mevr. Willem Johann Cornelis Huyssen van Kattendyke, née Gustavine Ottoline Frederique Sophie van Nagell, The Hague; desc. Huyssen van Kattendyke, The Hague; PC 2008). Exh.: The Hague 1903; Rotterdam 1946, no. 33, n.r.; Liotard 1985, no. 39 repr., p. 117. Lit.: Staring 1947, pp. 22, 28, fig. 28a; Jean Overton Fuller, *The comte de Saint Germain*, London, 1988, repr.; L&R 187 repr.; R&L 307, fig. 444 φ

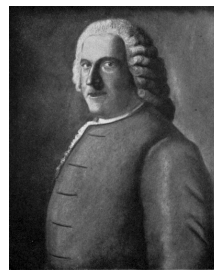


~grav. Willem van Senus, for M. Stuart, *Vaderlandsche Historie*, Amsterdam, 1821–26. Exh.: Liotard 1985, no. 39c n.r.

~repl., pnt. (Rijksmuseum A4155. London, Christie's, 29.III.1968, Lot 38). Exh.: Liotard 1985, no. 39b repr. Lit.: Thiel 1976; R&L 308, fig. 445

~version, pnt. (London, Christie's, 13.XII.2000, Lot 70, £55,000). Lit.: R&L 309, fig. 446

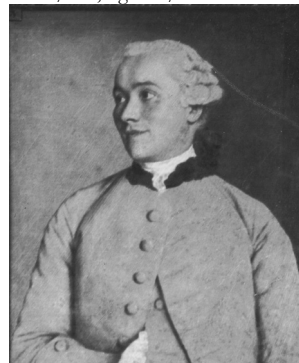
J.49.1109 ~cop., pstl, 59.5x48, 1756 (Aldenburg Bentinck, Kasteel Middachten, De Steeg). Exh.: Liotard 1985, no. 39a n.r. Lit.: Humbert, Revilliod & Tilanus 1897, no. 24 repr.; Mrs Aubrey Le Blond, *Charlotte Sophie, Countess Bentinck*, London, 1912, 1, repr. opp. p. 98; R&L p. 473 n.r. φκ



Pierre-Joseph BERNARD, v. Lavergne

J.49.1112 Richard BERENGER (1720–1782), Gentleman of the Horse to His Majesty, pstl, c.1754 (David Garrick; inv. p.m., 1.III.1779, no. 59, [£24: annotation illegible, £3 implied by page total]; his widow; sale p.m., Hampton, Burrell, 21.VII.1823 & seq., Lot 30). Lit.: R&L 301 n.r.

J.49.1113 Jean BERTRAND, sgr de Coinsins et de Genolier (1725–1780), pstl, 68x55, c.1758; & pendant: J.49.1114 épouse, née Catherine-Élisabeth Boissier (1729–1805), pstl, 68x55, c.1758 (Candolle-Kunkler; destroyed in fire, 1887). Exh.: Liotard 1886, no. 3/4. Lit.: Humbert, Revilliod & Tilanus 1897, no. 25/26, repr. p. 111; L&R 221/222 repr.; R&L 352/353, fig. 506/505 φ



J.49.1117 Pierre-Victor, baron de BESEVAL (1722–1791), pstl, 49.5x38.5, sd ✓ “J E Liotard/1746”, Paris (Jacques Salmanowitz, Geneva, 1935; PC 2008). Lit.: L&R 87 repr.; R&L 148, fig. 249, as of Besenval; Wine 2018, p. 136, n.21(3), as ?Besenval φδ



J.49.1119 Sir William Ponsonby, 2nd Earl of BESSBOROUGH (1704–1793), in Roman costume, pstl/pchm, 62x50, 1754 (sitter; don: Princess Amelia (1710–1786); legs 1786: Duke of Portland; Welbeck 1936; desc.: Welbeck, Portland collection, G.0366; acqu. Lowell Libson; cat. 2017, pp. 14ff). Lit.: Portland & Fairfax Murray 1894, no. 366, as presented by Lord William Bentinck to Madame Adélaïde de France, who bequeathed it to Duke of Portland; Goulding 1936, no. 366 n.r.; L&R 169 repr.; R&L 274, fig. 406; Jeffares 2014φσ



J.49.1121 ~repl., pstl/prepared canvas, 60x48, 1754, inscr. *verso* “Milord Besborough ami de & peint par Liotard” (Rijksmuseum inv. SK-A-237. Liotard; J.-E. Liotard-Crommelin; Mlle M. A. Liotard, Amsterdam; legs 1873). Exh.: Liotard 2002b, fig. 19. Lit.: Humbert, Revilliod & Tilanus 1897, no. 27, repr. p. 7; Thiel 1976; L&R 170 repr.; R&L 275, fig. 407; Liotard 2015a, fig. 49 φσ

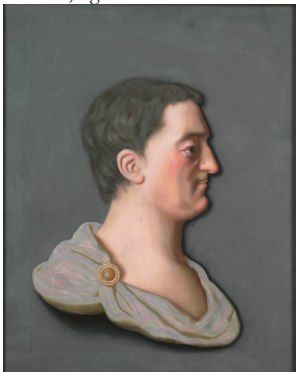


Photo courtesy Rijksmuseum

J.49.1124 Frederick Ponsonby, Viscount Duncannon, later 3rd Earl of BESSBOROUGH (1758–1844), Whig politician, collector, pstl/pchm, 62.2x50.8, 1773, Royal Academy 1773, no. 176 (Stansted Park. Desc.). Exh.: Liotard 2015a, no. 46 repr. Lit.: Humbert, Revilliod & Tilanus 1897, no. 28, repr. p. 112; Bessborough 1958, p. 119 n.r.; L&R 292 repr.; Bessborough & Aslet 1984, p. 142 n.r.; Breffny

1987, p. 38; Ingamells 2004, p. 56 repr.; R&L 496, fig. 700 Φσ



Photo courtesy Stansted Park Foundation

J.49.1127 ~cop. (Sir Ashley Ponsonby 1935). Lit.: R&L p. 622

Biancheri, v. Bianchieri

J.49.1129 Henric BICKER (1722–1783), lid van de firma Andries Pels en Soonen, pstl/pchm, 53x44.5, 1756; & pendant: J.49.113 spouse, née Clara Magdalena Dedel (1727–1778), pstl/pchm, 53x43.5, 1756 (Amsterdam Museum, inv. A7367/7368, 39821/39822. Legs Jkvr. J. C. van Winter-Bicker 1878; dep.: Rijksmuseum 1881–1975). Exh.: Liotard 1985, no. 55/56 repr.; Amsterdam 2002, no. 96a/b repr./-. Lit.: Humbert, Revilliod & Tilanus 1897, no. 29/30 n.r.; Moes 1897–1905, I, no. 644/1919; Thiel 1976; L&R 193/194 repr.; Cat. schilderijen, AHM, 1965–79, p. 192, no. 248; R&L 317/318, fig. 459/460; Amsterdam 2018, p. 10/11 repr. φ



~cops., pnt. (Rijksmuseum C43/C44). Exh.: Liotard 1985, no. 55a/56a repr. Lit.: L&R 193¹/194¹ repr.; R&L p. 478, fig. 455/456

~cop. (*Madame*), pnt. (PC). Exh.: Liotard 1985, no. 56b repr.; R&L p. 478 n.r.

J.49.1135 Pieter van BLEISWIJK (1724–1790), secrétaire de la ville de Delft, pstl/pchm, 59x47, sd → “par Liotard/1756”; & pendant: J.49.1136 spouse, née Geertruida Antonia (1728–1790), pstl/pchm, 59x47, sd ← “par Liotard/1756” (Geneva, mAHI, inv. 1911-

33/32. Van Bleiswijk, Delft; Yska van Wynskeum, Netherlands; G. C. Meyeren, Netherlands; Amsterdam, 28–30.III.1911, Lot 171 repr., Df925; Roos; acqu. 1911). Exh.: Geneva 1914; Liotard 1925; Zurich 1939; Geneva 1948, no. 23/24; Zurich 1978, no. 12/13; Liotard 1985, no. 52/53 repr.; Liotard 2002a, p. 88 repr. Lit.: Staring 1947, pl. 13/14; Loche 1976; L&R 195/196 repr./repr. clr pl. XXXVIII; Buysens 1988, no. 181; Liotard 2006, p. 88/89 repr.; R&L 323/324, fig. 468/469 Φσ



~version (*Bleiswijk*), min., in reverse, 3.7x3 (Rijksmuseum A4336). Exh.: Liotard 1985, no. 52b/- repr., attr. Lit.: R&L 325, fig. 452

~grav. (*Bleiswijk*): Willem van Senus. Exh.: Liotard 1985, no. 52a n.r. Lit.: R&L p. 483, fig. 453

J.49.1138 William Stewart, Viscount Mountjoy, 1st & last Earl of BLESSINGTON (1709–1769), crayons (his widow, née Eleanor FitzGerald (c.1712–1774), of Charles Street, Berkeley Square; “my dear Lord’s picture in Crayons done by Liotard”, will 11.X.1774, legs: Admiral John Forbes (1714–1796), cousin of the sitter; hanging in his dressing room in London, legs, will proved 20.III.1796: whoever shall prove himself the rightful heir to the sitter’s estates, presumably void, ?by default: his great-nephew, George, 6th Earl of Granard)

Boère v. Bouër

J.49.1146 Mme Jean-Jacques-André BOISSIER, née Marie-Charlotte “Manon” Lullin (1725–1750), pstl/pchm, 61x47.5, 1746 (Horace-Bénédict de Saussure, gendre du sujet; Théodore de Saussure 1886; desc., Vufflens; Jacques & Raymond de Saussure, Berne, 1948). Exh.: Liotard 1886, no. 32; Liotard 1925, p. 103 repr.; Geneva 1936, no. 5; Geneva 1948, no. 16. Lit.: Humbert, Revilliod & Tilanus 1897, no. 34 n.r.; L&R 90 repr. clr pl. XX; R&L 157, fig. 261; Oresko 2010, fig. 2; Koos 2014, p. 169 repr. φ



J.49.1148 Claude-Alexandre, comte de BONNEVAL (1675–1747), général, dit Ahmet Pacha, pstl/ppr, 60x47, sd ← “Acmet Pacha/Conte de Bonneval/peint à Constantinople/par J. E. Liotard 1741” (Belvoir Castle, Duke of Rutland. Belvoir Castle 1792, Musgrave’s lists, as Count Bonneval in crayons). Lit.: Liotard 1992, repr.; L&R 47 repr.; R&L 83, fig. 111 [sources conflated the Walpole and Rutland versions but Musgrave’s inventory predates the Walpole sale] φ



Photo courtesy owner

J.49.1151 ?=/~repl., Le portrait du fameux Bonneval; & pendant: J.49.1152 celui d’une vieille, en buste de grandeur naturelle, m/u, 51.5x40.6 (Clemens August von Bayern (1700–1761); vente p.m., Bonn, 23.v.1764, Lot 136/137; Rthl 22/10/-; Beckering). Lit.: Jeffares 2015c

J.49.1153 ~version, pstl (Sir Everard Fawkener 1742; sale p.m., London, Ford, 27.III.1759, Lot 46; Horace Walpole, 4th Earl of Orford; visible in Thomas Sandby, Paul Sandby & Edward Edwards’ Gallery at Strawberry Hill, 1781; desc.: Earl Waldgrave; Strawberry Hill, George Robins, 25.IV.1842 & seq., 18.V.1842 [2nd ed. only], Lot 74 n.r., 1/2 gns; Luxmoore; Earl of Bessborough; London, Christie’s, 10.VII.1850, Lot 13, 11/-; Rodel). Lit.: Walpole 1774; Walpole 1784, p. 464 n.r.

~m/u (Lord Bessborough. Roehampton, 1785, Musgrave’s lists). Lit.: L&R, s.no. 47 n.r.; R&L, s.no. 83, fig. 115

~counterproof (Louvre RF 1387). Lit.: L&R 47¹ repr.

~min./ivory (PC 2008). Lit.: R&L 84, fig. 116

~enamel/copper (*olim* Salmanowitz). Lit.: L&R 47² repr.; R&L, s.no. 84 n.r.

J.49.1158 Joseph BOUËR (1707–1779), banquier, du château de Mont, Mont-sur-Rolle, membre du conseil de Genève, pstl/pchm, 62.5x49, sd “par Liotard 1746”, inscr. *verso* “M. Boere, negociant à Gènes, né et décidé à Genève, peint par J. E. Liotard en 1746”; & pendant: J.49.1159 épouse, née Catherine Bégon (1715–1749), en costume de carnaval, pstl/pchm, 61x48, sd “J. E. Liotard 1746”, inscr. *verso*

“Madame Boere, Epouse du negociant de Gènes, décidée à Genève, peint par J. Et. Liotard en 1746” (Rijksmuseum 2938/2939, SK-A-232/233. Le sujet –1777; returned to Liotard; J.-E. Liotard-Crommelin; Mlle M. A. Liotard, Amsterdam; legs 1873). Exh.: Paris 1948d, no. 5/6; Geneva 1948, no. 14/15; Liotard 2002b, fig. 7/6. Lit.: Humbert, Revilliod & Tilanus 1897, no. 31/32 n.r.; Fosca 1956, pl. -/XVIII; Thiel 1976; L&R 88/89 repr. bw/clr pl. XIX; François Naef, *La Famille Bouër à Genève et à Rolle (1740–1789)*, Geneva, 2004, fig. 6/5; R&L 152/153, fig. 254/253; Sauvage & Gombaud 2015, tin white and zinc white present; Aileen Ribeiro, *Clothing art*, New Haven, 2017, figs. -/153, 160; Paris 2017a, -/fig. 41 φ



Photo courtesy Rijksmuseum

~(Monsieur): cop. Jacques Thouron, enamel (PC). Lit.: R&L p. 358, fig. 257

~(Madame): cop., gch./ppr, 6.7x5.2 (baron Meyer de Rothschild; Mentmore sale, London, Sotheby’s, 11.II.1999, Lot 102; Lavender. Baroni; New York, Sotheby’s, 31.I.2013, Lot 182, circle of Liotard)

J.49.1165 Matthew Robinson BOULTON (1770–1842), aged 3, 27.9x22.6 ov., sd → “à Soho/par Liotard/1773” (Birmingham Museum and Art Gallery, inv. 1987P3. Desc.: sitter’s great-grandson, Major Eustace Robb (1899–1985), of Great Tew; London, Christie’s, 9.XII.1986, Lot 179 repr., est. £30–50,000; acqu. 1988 with NACF, £18,750). Exh.: Birmingham 2009, repr. Lit.: *NACF review*, 1988, pp. 88–93 repr.; R&L 486, fig. 687 φ



Photo courtesy Birmingham Museums and Art Gallery

~cop. Matthew Piers Watt Boulton, pnt., sd 1872 (London, Rosebery’s, 12.XI.2025, Lot 93 repr.)

J.49.1166 Un princesse [de la maison de ?BOURBON], en grand habit, m/u

J.49.1167 ~cop., pstl, 59.6x51.4 (Versailles, magasin, 1784, inv. 466). Lit.: Durameau 1784, III, p. 29, no. 86

J.49.1168 La comtesse de BRIONNE, née Louise-Julie-Constance de Rohan-Rochefort-Montauban (1734–1815), m/u, 1748. Lit.: Clément 1755, 30.XI.1748; L&R 100 n.r.; R&L 189 n.r.

J.49.1169 Augustus John Hervey, 3rd Earl of BRISTOL (1724–1779), naval officer, m/u, small, executed in Paris, .I.1750 (comm., 16 louis). Lit.: Hervey 1953, pp. 97, 101, 107; L&R 119 n.r.; Ingamells 2004, p. 71 n.r.; R&L 194 n.r.

~repl., 2 mins.?, Paris, .IV.1750 (comm. for Mme de Caze and Mary Hervey). Lit.: Hervey 1953, pp. 97, 101, 107; Ingamells 2004, p. 71 n.r.

J.49.1171 Augustus John Hervey, 3rd Earl of BRISTOL, pstl, unfinished, 1774. Lit.: R&L p. 401

J.49.1172 Jean-Louis BUISSON-BOISSIER (1731–1805), conseiller d’État, pstl/pchm, 62.1x48.9, c.1764 (Houston, MFA, inv. 86.28. Desc.: Sophie Naville-Boissier; Gustave Naville 1886; desc. Robert Naville (1884–1970), Geneva; acqu. Zurich gallery SwFr2,000,000; acqu. 1986). Exh.: Liotard 1886, no. 22; Geneva 1896, no. 425; Liotard 1925; Geneva 1936, no. 6; Paris 1948d, no. 25; Geneva 1948, no. 41; Houston 1986, no. 14 repr. Lit.: Humbert, Revilliod & Tilanus 1897, no. 33 n.r.; L&R 265 repr.; Peter C. Marzio, *A permanent legacy: 150 works from the collection of the Museum of Fine Arts, Houston*, 1989, pp. 160f; Mitchell & Roberts 1996, p. 228 repr.; R&L 424, fig. 616 φ



~photograph, offered as pstl/ppr, 57x46 (Rome, Babuino, 26–29.V.2020, Lot 101 repr., est. €200–300; Rome, Babuino, 19–22.I.2021, Lot 279 repr., est. €5)

Johannes BÜRKLJ (Zurich, Koller, 22.III.2024, Lot 3436 repr., attr. Liotard), v. Reifenstein, J.6138.102

J.49.1174 Lord George [Augustus Henry] Cavendish, [1st Earl of BURLINGTON (1754–1834)], m/u (Rochampton, 1785, Musgrave's lists)



~min./ivory (Stuart family; Earl of Portarlington; desc.: PC). Lit.: R&L 423, fig. 613

J.49.1175 John Stuart, Viscount Mountstuart, later 1st Marquess of BUTE (1744–1814), pstl/pchm, 111.5x87.5, sd ↗ “A Genève/par J. Etienne/Liotard/1763” (Los Angeles, J. Paul Getty Museum, inv. 2000.58. Comm. John, 3rd Earl of Bute (1713–1792), sitter's father; desc. Lord Bute 1956; English PC 1978; acqu.2000, £1,308,710). Exh.: Los Angeles 2002; Liotard 2015b; Los Angeles 2018. Lit.: James Martin, MS journal of his Grand Tour 1763–65, Geneva, 2.IX.1763, “wt to Liotard's the Painter saw some very good Portraits of his own painting particularly one of Lord Monstewart very highly finished – He paints only in Crayons & expects to be very highly paid for his Labour. The picture above mentioned tho' not half so large as life was to cost 100 Guineas”; Pierre-Jean Grosley, *Londres*, Neuchâtel, 1771, III, p. 27f; Liotard 1781, p. 58, “extrêmement fini”; Mrs Godfrey Clark, ed., *Gleanings from an old portfolio*, Edinburgh, 1896, II, repr. opp. p. 181, as with Col. Stuart Wortley, Highcliffe Castle, Hampshire; Humbert, Revilliod & Tilanus 1897; Baud-Bovy 1903; L&R 260 repr. clr pl. II; Ford 1989, p. 103f, print repr., citing Martin; Laing 1992; *Report on the export of works of art*, XLVI, 1999–2000, pp. 38ff, as on ppr; *Apollo*, .XII.2000, p. 37; Russell 2004, pl. 8; Pierre Rosenberg, *En Amérique seulement*, 2006, p. 146; R&L 421, fig. 614; Liotard 2015a, fig. 51; Jeffares 2015f; Baker 2023, fig. 39 ☐σ

J.49.1183 John Stuart, Viscount Mountstuart, later 1st Marquess of BUTE, half length, in a blue coat, pstl/pchm, 65.4x54.5, inscr. *verso* (Dumfries House. Sitter's daughter, Charlotte Stuart; legs: her nephew, Patrick James Herbert Crichton-Smith; desc.: London, Christie's, 8.VII.2009, Lot 127 repr., est. £15–20,000, b/i). Lit.: Roethlisberger 2014, p. 189 n.r. [same composition as Milliken] ☐σ



J.49.1185 Cornelis CALKOEN (1696–1764), ambassador to the Porte, pstl/pchm, 63x51 (The Hague, Rijksdienst voor het Culturele Erfgoed, inv. C1794. E. C. U. baron Calkoen, Eefde, 1934. A. Calkoen, The Hague; acqu. 1985). Exh.: Amsterdam 1934, no. 26 n.r.; Amsterdam 1962; Liotard 1985, no. 7 repr.; Amsterdam 2003. Lit.: Staring 1947, pl. 7; G. Bosscha Erdbrink, *Art at the threshold of felicity. Ottoman–Dutch relations during the embassy of Cornelis Calkoen*, Ankara, 1975; L&R 35 repr.; A. Quarles van Ufford, “Ambassadeur in de Tulpentijd. De ‘Turkse’ schilderijen van Cornelis Calkoen”, *Museumscriptie/Vitrine*, XVI, 2003/5, pp. 40–43, repr. clr; R&L 57, fig. 57; Wallert & al. 2016, fig. 2 (contains bismuth white) ☐



Photo © J. Paul Getty Museum, Los Angeles

~grav. J. R. Smith, mezzotint, 1774. Lit.: Humbert, Revilliod & Tilanus 1897, no. 62, repr. p. 78; Manners 1933, pl. v; Ford 1989, fig. 12; D'Oench 1999, p. vi repr.; R&L p. 563, fig. 612

~étude, dessin, 90x47.6 (Geneva, mAH, inv. 1934-27). Lit.: L&R 260¹ repr.; Ford 1989, p. 117 n.25; R&L p. 563, fig. 611

J.49.118 ~repl., head and shoulders, pstl/pchm, 65.4x54.5, 1763 (?le sujet ou Jacques Pictet; sa veuve, née Jeanne Thellusson; son fils, Louis Pictet; Jean-François-Louis Pictet; Richard Pictet (1817–1884) 1858; don: Frances Stuart, 2nd Countess of Harrowby, fille du sujet; desc. Earl of Harrowby, Sandon Hall, Stafford). Exh.: London 1956, no. 583 n.r.; Liotard 2015a, no. 44 repr. Lit.: L&R 260 *bis*, repr.; R&L 422, fig. 615 ☐σ



J.49.1187 =?pstl, anon. (Baron Calkoen, The Hague, 1897). Lit.: Moes 1897–1905, no. 1373

J.49.1188 Dame de la famille ?CALKOEN, en turque, pstl/pchm, 54x41.5, 1738–43 (The Hague, Rijksdienst voor het Culturele Erfgoed,

inv. C1830). Exh.: Liotard 1985, no. 8 repr.; Amsterdam 2003, p. 15 repr. Lit.: L&R 43 repr.; R&L 58, fig. 62 ☐



Campbell, v. Lewis

J.49.1191 Pierre-Philippe CANNAC D'HAUTEVILLE, baron de Saint-Légier (1705–1785), directeur des coches à Lyon, pstl/ppr, 83x64, c.1752 (château d'Hauteville; desc.: Wilfred Grand d'Hauteville, Saint-Légier-sur-Vecvey, 1978; PC 2008; London, Christie's, 10.VII.2014, Lot 151 repr., est. £60–80,000, b/i; château d'Hauteville, Saint-Légier-La Chiésaz, Hôtel des ventes de Genève, 11.IX.2015, Lot 355 repr., est. SwFr20–30,000, SwFr55,000). Exh.: Geneva 1948, no. 42. Lit.: Grand d'Hauteville 1932, p. 201, repr. frontispiece; L&R 158 repr.; R&L 209, fig. 345; Nyon 2016, ill. 61, repr. avec cadre ☐σ



J.49.1193 CAROLINA Prinzessin von Nassau-Weilburg, née van Oranje-Nassau (1743–1787), enfant, pstl, 54x43, sd 1756 (comm. Prinses Anna van Oranje-Nassau, D/f577½ with pendant, Bentinck; desc.: Baron J. C. van Wassenaar, huize Nederhemert bij Heusden; Mme van Nagel van Nederhemert; lost 1945). Exh.: Amsterdam 1898, no. 1003; Liotard 1985, no. 34, repr. p. 107. Lit.: Humbert, Revilliod & Tilanus 1897, no. 22 n.r.; Staring 1947, pl. 12; L&R 204 repr.; R&L 316, fig. 458 ☐



~cop. T. P. C. Haag, pnt. (s-Gravenhage, Gemeentemuseum). Exh.: Liotard 1985, no. 34a n.r.

~cop. T. P. C. Haag, pnt. (Vaassen, Kasteel de Cannanburch). Exh.: Liotard 1985, no. 34b repr.

~pendant, Willem V

J.49.1198 CAROLINE LUISE Markgräfin von Baden, née von Hessen-Darmstadt (1723–1783), pstl/pchm, 62.5x48.5, 1745–46 (Karlsruhe, Staatliche Kunsthalle, inv. 2692. Liotard 1775; Basel PC 1783; Geneva PC 1978; acqu. 1979). Exh.: Geneva 1953, no. 23; Karlsruhe 1983, no. 11 repr. clr; Karlsruhe 2015, no. 40, repr. p. 69. Lit.: Humbert, Revilliod & Tilanus 1897, no. 19 n.r.; L&R 82 repr. clr pl. XVII; *Katalog Neuerwerbungen 1972–1984*, 1984, repr.; Liotard 1985, fig. 8; Lauts 1990; de Herdt 2003, repr.; Burns 2007, fig. 18; Bull 2008, fig. 19; R&L 147, fig. 246; Koos 2014, p. 177 repr.; Liotard 2015a, fig. 8; Reuter 2015, fig. 1; Sauvage 2015, fig. 3; San Francisco 2021, p. 21, fig. 11; Liotard 2023, fig. 30 φσ



J.49.12 ~repl, pstl, gch./pchm, 63x51, c.1745–46 (desc.: Max von Baden, Schloß Salem, K 429). Exh.: Karlsruhe 1907; Berlin 1966, no. 31 repr.; Baden-Baden 1981, no. 5.2.1, repr. p. 57; Karlsruhe 2015, no. 39, repr. p. 68. Lit.: Kircher 1934, repr.; Kircher 1958, no. 470 repr.; L&R 83 repr.; R&L 146, fig. 245 φσ



~cop. (Karlsruhe, Kunsthalle, inv. 1974. *German art market*; acqu. 1938), v. Caroline Luise

J.49.1203 ~cop., pstl, 31x24.5, en buste, à dr., manteau d'hermine, tête identique au Liotard, plumet à dr. et boucle d'oreille (Karlsruhe PC 1934). Lit.: Kircher 1934, repr.; R&L pp. 353 n.r.

J.49.1204 ~pstl/pchm, 31x24.5 (Mme Wagner, Karlsruhe, 1936). Lit. Trivas MS 1936, rejected; R&L p. 353 n.r.

J.49.1205 ~m/u (*olim* Baden-Baden, Zähringer Museum). Lit.: R&L p. 353 n.r., not identified *Caroline Luise, v.g. Countess of Coventry*

J.49.1207 CAROLINE MATILDA, dronning af Danmark 1766, née Princess of England (1751–1775), pstl/pchm, 41x31, 1754 (Royal Collection RCIN 400899). Lit.: Trivas 1936b, pl.

IID repr.; Millar 1963, no. 580 repr.; L&R 184 repr. clr pl. XXXVIII; R&L 257, fig. 380 φ



J.49.1209 Lady Mary CARR, née Vane (c.1727–1781), pstl, 58x44, 1753–54 (Lord Barnard, Raby Castle). Lit.: L&R 153 repr.; R&L 270, fig. 398 φ



J.49.1211 ?Isaritsa CATHERINE II (1729–1796), en buste, presque de profil à dr., la tête à peu près de face, le regard sur le spectateur, robe rouge garance, décollé en pointe, fichu de dentelle noire aux épaules, collier de quatre rangées de perles, petit bonnet, pstl, 39x31 (Émile Picard, Geneva, 1886). Exh.: Liotard 1886, no. 15, attr. Liotard; Revilliod note, as *Éc. fr.* Lit.: Humbert, Revilliod & Tilanus 1897, no. 14 n.r.; L&R 369 n.r.; R&L R5

J.49.1212 =?(?Lord Bessborough; [?Roehampton, 1785, Musgrave's lists; not verified]; London, Christie's, 5.II.1801, Lot 10. ?Duke of St Albans sale). Lit.: L&R 369 n.r.

Cavendish, v. Burlington; Devonshire

J.49.1214 Mme Anne-Nicolas Robert de CAZE, née Susanne-Félix Lescarmotier (1730–p.1786), ?min., 1748 (le sujet; don: Augustus John Hervey, later 3rd Earl of Bristol 1750). Lit.: Clément 1755, 30.XI.1748; L&R 101 n.r., as pstl, Mlle d'Escormoutier; R&L 188 n.r., as min.

J.49.1215 Charles CHAIS (1700–1785), predikant van de Waalse kerk in Den Haag, pstl, 22.8x17.7, 1756 (Jean Fabius (1840–1914), The Hague; his son Gerhard Jan Fabius. Dutch PC 2000). Exh.: Liotard 1985, no. 40 repr. Lit.: Humbert, Revilliod & Tilanus 1897, no. 35 n.r.; Moes 1897–1905, I, no. 1522; L&R 197 repr.; R&L 341, fig. 485 φ



~grav. Jacob Houbraken 1756. Exh.: Liotard 1985, no. 40a n.r. Lit.: L&R p. 492, fig. 486

~cop., dessin, pierre noire, sanguine, 22.7x17.7 (Leiden, University). Exh.: Liotard 1985, no. 40b repr. Lit.: L&R 197¹ repr.; R&L p. 492 n.r.

~cop. pnt. (Geneva, Bibliothèque). Lit.: R&L p. 493 n.r.

J.49.122 [William] CHALONER [(1745–1793) of Guisborough], m/u, 1763 (mentioned in Liotard letter to Bessborough, 28.VI.1763). Lit.: R&L 428 n.r.; Jeffares 2009

J.49.1221 Jacques de CHAPEAUROUGE (1744–1805), négociant à Hambourg, pstl/pchm, 50x40, c.1753 (desc.: son fils, Guillaume-Corneille de Chapeaurouge (1773–1819); sa fille Jeanne-Julie-Judith (1800–1883), ∞ 1818 Frédéric-Jean-François de Stoutz; leur fils Frédéric de Stoutz (1840–1915) 1886; son Gustave de Stoutz (1870–1949), Geneva, 1948; Geneva PC 1978. De Bayser; acqu. US PC). Exh.: Liotard 1886, no. 23; Liotard 1925, p. 103 repr., inconnu; Geneva 1948, no. 70. Lit.: Humbert, Revilliod & Tilanus 1897, no. 73 n.r., as enfant de M. de Stoutz; L&R 150 repr.; R&L 156, fig. 260 φ



J.49.1223 CHARLES ALEXANDRE, duc de Lorraine, archiduc d'Autriche, Herzog Karl von Lothringen (1712–1780), gouverneur des Pays-Bas, pstl/pchm, 67x54, 1744 (Weimar, SWKK, inv. G 64. Acqu. a.1829). Lit.: Humbert, Revilliod & Tilanus 1897, no. 13 n.r.; L&R 70 repr.; Vienna 1980, no. 16,02, fig. 146.9; R&L 119, fig. 195. Head close to Meytens pnt. 1743 (Schloß Hetzendorf), grav. Daullé, reversed φ



Photo courtesy Stiftung Weimarer Klassik und Kunstsammlungen

~grav. Gabriel Bodenehr (1673–1766). Lit.: R&L p. 318 n.r.

J.49.1227 [=?]repl., pstl, 65x52.8 (Liotard; liste d'Angiviller 1785, no. 160; inv. p.m. 1789, no. 157). Lit.: L&R 71 n.r.; Loche 1980, p. 208 n.r.; R&L 120 n.r.; Jeffares 2009

~repl., pnt. (Vienna, Heeresgeschichtliches Museum)

J.49.1229 CHARLES ALEXANDRE, duc de Lorraine, archiduc d'Autriche, Herzog Karl von Lothringen, pstl/pchm, 66x56 (Slavkov u Brna, Zámek Slavkov–Austerlitz. Joseph II.; Wenzel Anton von Kaunitz-Rietberg; desc.). Lit.: R&L p. 304, fig. 187. A/r Meytens pnt. 1743 (Vienna, KHM, inv. GG-2731) φ



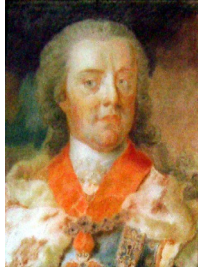
J.49.1231 ~cop., pstl, 65x52 (Vienna, Schloß Schönbrunn, inv. SKB 002881. [?desc.: 8. Fürst von Thurn und Taxis, ∞ 1890 great-great-granddaughter of Maria Theresia] Fürst von Thurn u. Taxis, Castello di Duino; Duino, Beaussant Lefèvre, 11–14.VI.1997, Lot 300 repr., as of Franz I. Stephan, bottega di Liotard, est. It£15–25,000. Munich, Hampel, 16.VI.2010, Lot 345 repr., with pendant, attr., est. €26–30,000, €26,000). Exh.: Vienna 2017b, HM 5.2, repr. p. 264, as by Austrian sch., 1744. Lit.: R&L, p. 303, fig. 203; Jeffares 2009, images reversed φκ



~grav. Daullé, 1745, in reverse. Lit.: Bruxelles 1987, p. 242 repr.

~cop., pnt. (Bruxelles, Palais Charles de Lorraine)

J.49.1235 ~cop., head only, pstl, 46.5x34.5 (Vienna, Dorotheum, 24.III.1999, Lot 193 repr., atelier de Liotard, est. €8,700–10,000, with pendant, Maria Anna [p. Austrian sch., J.92.1521], b/i). Lit.: R&L, p. 304 n.r. φκ



J.49.1237 CHARLES ALEXANDRE, duc de Lorraine, pstl, 65x48.7 (prince Charles de Lorraine; inv. p.m., 6.X.1780, no. 28) [new attr., ?]

J.49.1238 CHARLES Edward Stuart, Prince of Wales (1720–1788), pstl, 1737 (comm. with two other pstls and min., 54 zecchini; frame and gilding separately invoiced; mentioned in letter of James Stuart to O'Rourke, 20.XII.1737, to be sent to him in Vienna; Liotard described as “the better likeness” compared with Rosalba pastel; =?Cardinale Silvio Valenti Gonzaga, Rome, inv. 1756, 20 scudi, with pendant, as i figli del Re Giacomo Stuardo, con loro cornice liscia a vernice e cristallo avanti, dipinto a pastello da M. Liu...; inv. 1760, no. 421/422 as, by Lionardi [sic]). Lit.: Pietrangeli 1961; Watson 1969a, p. 334; Getty Provenance Index, as by Leonard Brammer; R&L 41 n.r., both as lost after 1737; Corp 2011, p. 285 [new provenance]

~repl., min. 1738

~cop. ?Blanchet, pnt. (Edinburgh, SNPG). Lit.: Edinburgh 2001, fig. 65; Whistler 2009, p. 194, fig. 12

Chartres, v. Orléans

Chigi, v. Patrizi-Montoro

J.49.1243 General [James] CHOLMONDELEY [(1708–1775)], colonel of the 6th dragoons, pstl, Royal Academy 1773, no. 176 (Roehampton, 1785, Musgrave's lists). Lit.: L&R 305 n.r.; R&L 489 n.r.

J.49.1244 =?repl., pstl, 61x47, label verso “Brig Gen Cholmondeley” (London, Sotheby's, 6.VII.2010, Lot 184 repr., est. £20–30,000, b/i; London, Christie's South Kensington, 8.XII.2011, Lot 274 repr., as of ?George, 2nd Earl of Cholmondeley (1666–1733), est. £10–15,000, b/i). Lit.: Roethlisberger 2014, p. 187 n.r. φσ



J.49.1246 Unknown young man of the ?CHOLMONDELEY family in blue coat with red collar, pstl, sd → 1774 (Cholmondeley, Malpas, Chester; Luzern, Fischer, 20.VI.1953, Lot 3030 n.r.). Lit. R&L s.no. 489 n.r.

J.49.1247 James Hamilton, 2nd [2nd creation] Earl of CLANBRASSILL (1730–1798), pstl/pchm, 63.5x50.7, sd → “J. E. Liotard/1773”, Royal

Academy 1775 ([Hector G. Bachmann, Geneva; Auger] S. B. Hog & al.; London, Sotheby's, 16.V.1928, Lot 41, £40; Newton. New York, American Arts Association, sale 1935. PC Rochester. Rougeron, New York, c.1940. William H. Schab Gallery, New York, 1961, 1969. Galerie Pardo, Paris, 1978. Paris, Ader-Picard-Tajan, 27.XI.1990, Lot 171 repr., attr., €3811. Paris, Christie's, 21.III.2002, Lot 274 repr., est. €20–30,000, €26,000 [=€30,550]; Joseph & Lieve Guttmann, New York; PC; Zurich, Koller, 22.III.2013, Lot 3115 repr., est. SwFr50–70,000, b/i). Exh.: New York 1969, no. 4. Lit.: L&R 293 repr.; Judy Egerton, “So good with the humbler persons: Stubbs as portraitist”, *Burlington magazine*, CXLIX/1255, 2007, pp. 672ff, fig. 12; R&L 490, fig. 694 φ



Photo courtesy Christie's

J.49.125 ~repl., pstl, 63.6x51, sd → “James Earl of Clanbrassill/J E Liotard/1773” (London, Christie's, 7.XII.1995, Lot 167 repr., est. £700–1000, £2800; London, Christie's, 5.XII.1997, Lot 230 repr., est. £700–1000, £3500; Christie's South Kensington, 17.XII.1998, Lot 198 n.r., est. £300–500, £400; London, Christie's, 18.IV.2000, Lot 77 repr., £1500–2000, £3200). Lit.: R&L pp. 617f, n.r., as cop. [?; autograph] φσ



Photo courtesy Christie's

J.49.1252 ~cop., pstl, 22.9x18.4 ov., inscr. 1794 (Earl of Roden, RN, Bryansford, 1969). Lit.: R&L p. 618 n.r., as by H. D. Hamilton [pseudo-pendant for Roden's posthumous copy of Hamilton's portrait of Harriet, Countess of Clanbrassill] φα



J.49.1254 James Hamilton, Earl of CLANBRASSILL, pstl/soie, 86.5x62.2, sd ↗ “J. E. Liotard/1774”;

& pendant: J.49.1255 Countess, née Grace Foley (1743–1813), pstl/soie, 86.5x62, sd → “par J. E. Liotard a 71½ ans/May 1774”, (Zurich, Kunsthau, inv. 2013/16-17. desc.: Lord Roden; (*Earl*): London, Sotheby’s, 3.III.1957, Lot 176, £600; Feilchenfeldt, Zurich; Hausamann, Zurich; (*Countess*): London, Sotheby’s, 3.III.1957, Lot 177, £850; Speelman, London; Marchig, Geneva, 1959; acqu. PC c.1960, reunited with pendant; Swiss PC; E. V. Thaw, New York, 1980; European foundation; London, Christie’s, 6.VII.1993, Lot 184 repr., est. £300–400,000, b/i; PC 2006; don Dr Walter Feilchenfeldt in memory of Marianne & Walter Feilchenfeldt 2013). Exh.: Liotard 2006, no. 42/43 repr. Lit.: *Weltkunst*, 1957/5, p. 13 repr. (*Countess*); L&R 294/295 repr.; R&L 491/492, fig. 695/693; *Jahresbericht 2013*, Zürcher Kunstgesellschaft, repr. Φσ



J.49.1258 ~repl., pstl/pchm, 85x61, inscr. → “Par J. E. Liotard a 71½ ans/May 1774”, inscr. → “Grace Countess of Clanbrassill” (Saint-Cloud, musée du Grand Siècle. Desc.: London, Phillips, 11.XII.1991, Lot 165 repr. clr, est. £40–50,000; 31.III.1992; London, Phillips, 7.VII.1993, Lot 95 repr., est. £12–15,000, £11,000; PC Pierre Rosenberg; don 2020). Lit.: R&L 493, fig. 696 Φσ



~repl., min./ppr, Liotard & Jean-Daniel Welper (Geneva, mAII, inv. AD6675, dep. Fondation Jean-Louis Prevost). Lit.: R&L 494, fig. 697

J.49.1261 David CLAPARÈDE (1727–1801), pasteur et professeur de théologie, bourgeois de Genève 1764, pstl/ppr, 46x38, c.1760 (Geneva, musée international de la Réforme. Desc. Wanda Chenevière-Claparède, Geneva; desc.; don 2008). Exh.: Liotard 1886, no. 7; Liotard 1925; Geneva 1948, no. 34; Lausanne 1985, no. 469 repr. Lit.: Humbert, Revilliod & Tilanus 1897, no. 36 n.r.; L&R 237 repr.; Erica Deuber-Pauli & al., *Voltaire chez lui*, 1994, p. 147 repr., R&L 384, fig. 544 φ



J.49.12615 ~cop., pstl, 73x55.5 (Geneva, Bibliothèque, inv. Tableau, no. 37). Lit.: Bouvier 1932, p. 176; Candaux 1994, fig. 13 φκ



J.49.1262 [olim J.49.2467] Homme [de la famille Claren, ?Daniel CLARENC (1709–1781), de la paroisse de Saint-Loup à Puylaurens, négociant à Lyon, épouse de Marie-Louise Lavergne, nièce de l’artiste] au manchon, pstl/ppr, 77x61.4, inscr. “M^r Claren de S^t Lo[up]” (art market 1995–2000). Lit.: R&L 354, fig. 507, inconnu, c.1758, le nom d’un ancien propriétaire; Jeffares 2023c [new identification 2022] φδν

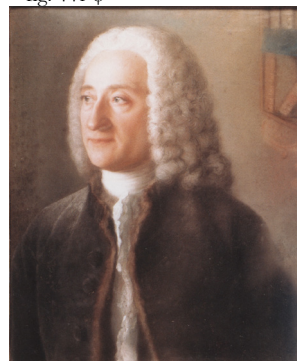


J.49.1263 Un garçon Claren, petit-neveu de Liotard [?Pierre CLARENC], m/u, 1781, ?finished. Lit.: R&L 540 n.r.

J.49.12631 ~pendant, sa sœur [fille], arrière-petite-nièce de l’artiste, Anne-Philippine Claren (1773–1826), ∞ Pierre Sol de Beauclair, pstl/toile préparée, 55.7x42.8, 1781, inscr. *verso* “Anne Claren / à douze ans / depuis mariée à Pierre / Sol mort / général” (Louvre, inv. RFML.AG.2022.19.1. Le sujet; sons fils Edouard Sol (1803–1879); desc. Acqu. a.2014 Jean-Michel Foley, antiquaire à Beaune; sa veuve; son gendre, Romain Gaudillat; acqu. 2021 Arnaud Charvet, galeriste, Paris; Nicolas Schwed; Swiss PC, acqu. 2022). Lit.: R&L 540 n.r.; *Grande Galerie*, 60, .IX.2022, p. 24 repr.; Jeffares 2023c φ



J.49.1264 Jacques-Annibal CLARET, chevalier, baron d’Èveux, sgr de La Tourette et de Fleurieu (1692–1776), prévôt des marchands de Lyon 1740–45, pstl, 56x46.5, ?1754 (PC). Lit.: Perez 1980a, fig. 3; *Bulletin des musées et monuments lyonnais*, 1991/1, p. 3 repr.; R&L 306, fig. 441 φ



~grav. Louis-Martin-Roche Joubert (1721–1810). Lit.: Perez 1980a, fig. 2; R&L p. 470, fig. 443

J.49.1267 Lorenzo Corsini, pontefice CLEMENTE XII (1652–1740), pstl/pchm, c.1737 (Liotard, inv. p.m., no. 199; Marie-Thérèse Liotard). Lit.: L&R 18 n.r.; R&L 55 n.r.

J.49.1268 Louis de Bourbon-Condé, comte de CLERMONT (1709–1771), pstl (Liotard; inv. p.m. 1789, no. 135; Mme de Bassompierre). Lit.: L&R 370 n.r.; R&L 235 n.r.

J.49.1269 Marchese Francesco COLLICOLA-MONTIONI (1692–1751), pstl/pchm, 64x48.5, 1737; & pendant: J.49.127 marchesa, née Diana Cavalieri-Orsini-Sannesi, pstl, 63.5x48.5, inscr. verso 1737 (desc.; Palazzo Collicola, Spoleto; A. Cardelli, Rome, 1978; PC 2008). Lit.: L&R 28/29 repr.; R&L 37/38, fig. 37/38; Roethlisberger 2014, p. 187 n.r. φ



J.49.1273 Mme Samuel CONGNARD, née Marie Bathailly (1693–1758), grand-mère de la femme de l'artiste, pstl/pchm, 56.5x45, inscr. verso "Mad. Cognard Aieule de Marie Fargues Epouse de Jean Etienne Liotard qui l'a peinte en 1757" (Rijksmuseum SK-A-231. Famille Fargues; J.-E. Liotard-Crommelin; Mlle M. A. Liotard, Amsterdam, legs 1873). Exh.: Liotard 1985, no. 73 repr.; Liotard 2002b, fig. 20. Lit.: Humbert, Revilliod & Tilanus 1897, no. 37, repr. p. 114; Thiel 1976; Brieger 1921, repr. p. 110; L&R 209 repr.; R&L 335, fig. 480; Koos 2014, p. 167 repr.; Sauvage & Gombaud 2015 φσ



Photo courtesy Rijksmuseum

J.49.1276 Lady Anne CONOLLY, née Wentworth (1713–1797), pstl/pchm, 61x42, c.1754 (desc.: sitter's daughter, Mrs George Byng; desc.: Earls of Strafford, Wrotham Park). Exh.: Liotard 2015a, no. 36 repr. Lit.: Roethlisberger

1988, p. 50, fig.1; R&L 266, fig. 395; Thorpe 2023, p. 25 repr. & cvr φσ



J.49.1278 William CONSTABLE (1721–1791), pstl/2 sheets ppr, 73.7x60.3, 1770 (Burton Constable Foundation. Desc.: J. Chichester-Constable, Burton Constable, Yorkshire). Exh.: Hull 1959, no. 7; Hull 1970, no. 83; Liotard 2015a, no. 48 repr. Lit.: George Poulson, *History and antiquities of the seignory of Holderness*, Hull, 1891, II/1, p. 245, "beautifully done in Crayons, Wm. Constable, in the dress of Rousseau"; Ford 1974, pp. 408–15 repr.; L&R 279 repr.; Hugh Montgomery-Massingberd & Christopher Simon Sykes, *Great houses of England & Wales*, London, 1994, p. 149 repr.; *Burton Constable Hall: the eighteenth and nineteenth centuries*, 1998, p. 38 repr.; R&L 452, fig. 674; Jeffares 2015c; Gordon-Lennox 2020, p. 33 repr.; Rachel Feldberg, "Absent bodies?..." in Sarah Goldsmith & al., eds, *Letters and the body, 1700–1830*, 2023, p. 29 repr. φσ



~version, enamel. Lit.: R&L p. 595, fig. 675

J.49.128 Samuel de CONSTANT [?Marc-Samuel-François Constant de Rebecque (1729–1800), officier, romancier], m/u (Mlle L. Rilliet 1906). Exh.: Geneva 1906, no. 11 [attr.]

Constantin, v. Mavrocordato

Cornbury, v. Hyde

J.49.1283 Rodolphe COTEAU (1713–1793), armateur de Marseille, négociant à Genève, pstl/ppr, 41.8x35.5, sd ⤵ "Mr Rd Coteau/peint par J.E./Liotard age de 86 ans 1788" (Geneva, mA, inv. 1974-13. Famille Coteau, Geneva; famille Filliol, Geneva; Berlin, Stuker, 13.XI.1965, Lot 1552; Luzern, Fischer, 27.XI.1970, Lot 2545, Swfr5700; J. Streep, Amsterdam; acqu. 1974). Exh.: Liotard 1886, no. 9; Geneva 1896, no. 416; Liotard 1925; Geneva 1948, no. 62; Geneva 1977, no. 82; Liotard 1978, no. 31; Liotard 2002a, p. 102 repr. Lit.: Humbert, Revilliod & Tilanus 1897, no. 38 n.r.; L&R 368 repr. clr pl. LXIV; Buysens 1988, no. 195; Liotard 2006, p. 103 repr.; R&L 551, fig. 778 φσ



J.49.1285 Jean-Jacques COTTIN DE LA THULERIE (1738–1810), capitaine de cavalerie au régiment Royal-Cravates, pstl, 85x69, c.1767 (desc.; Monaco, Sotheby's, 29–30.XI.1986, Lot 356 repr., est. H2–3,000,000, b/i; PC 2008). Lit.: Liotard 1992, repr.; R&L 346, fig. 496, as c.1757 φ



Photo courtesy Sotheby's

~dessin (Geneva, mA, inv. 1934-26). Lit.: R&L p. 499, fig. 495

??Countess of COVENTRY, née Maria Gunning (1732–1760), dame habillée à la turque assise sur un sofa. [Numerous versions of this image may relate to different sitters, but are grouped together here; v. Bull 2008]:

J.49.129 ~?Mimica, jeune femme de Constantinople, ??Caroline Luise, pstl/pchm, 23.5x19, inscr. verso "Mimica pastel peint/Pastel de p^{ce} Darmstadt"; "peint par/Jean Etienne Liotard"; "M^{lle} Juliette de Nerke", "1749", c.1750 (Geneva, mA, inv. 1930-2. François Turrettini (1845–), Geneva, 1886; acqu. 1930; dep. fondation Gottfried Keller). Exh.: Liotard 1886, no. 30; Paris 1924b, no. 113; Liotard 1925, p. 104; Bern 1942; Geneva 1943, no. 850; Paris 1948d, no. 7 repr.; Geneva 1948, no. 21 repr.; Fosca 1956, pl. I; Zurich 1965, no. 106; Zurich 1978, no. 8; Scott 1985, fig. 3; Ford 1989, p. 110 n.r.; Liotard 1992, no. 69; Liotard 2002a, p. 65. Lit.: Humbert, Revilliod & Tilanus 1897, no. 41 n.r., as autograph; Gielly 1931; Vaudoyer 1948, p. 140 repr.; L&R 126 repr. clr XXIX; Amsterdam 2002, p. 235 repr.; Liotard 2002b, repr. p. 23; Buysens 1988, no. 184; Liotard 2006, p. 63 repr.; Перова 2006, p. 18 repr., as in Louvre; Bull 2008, fig. 15; R&L 190, fig. 311; Jeffares 2009 φδσ



J.49.1292 ~?Mme Jean-Étienne Liotard, née Marie Fargues (1728–1782), femme de l'artiste, pstl/pchm, 103.8x79.8, 1752–54/?1757 (Rijksmuseum SK-A-240. Liotard; liste d'Angiviller, no. 55; J.-E. Liotard-Crommelin; Mlle M. A. Liotard, Amsterdam; legs 1873). Exh.: Liotard 2002b, fig. 17. Lit.: Humbert, Revilliod & Tilanus 1897, no. 39, repr. p. 117; Thiel 1976; L&R 128 repr.; Liotard 1985, fig. 6; Loche 1980, p. 198; Bull 2008, fig. 12, as of Mme Liotard; Joachimesdes 2008, fig. 5; R&L 348, fig. 498; Ribeiro 2011, fig. 98; Burns & Saunier 2014, p. 185 repr.; Gombaud & al. 2014; Liotard 2015a, fig. 36; Gutowska-Dudek 2019, p. 22 repr. Φδσ



Zoomify
Photo courtesy Rijksmuseum
~grav. Richard Houston, as of Countess of Coventry. Lit.: Bull 2008, fig. 13; R&L p. 462, fig. 431a

~grav. Richard Houston, as of Countess of Coventry, with grav. a/r William Hamilton and Cotes of other Gunning sisters, for John Gunning, *Gratitude: a poem*, 1756

J.49.1297 ~version, pstl (Bernard Naef, Geneva, a.1988). =? Exh.: Liotard 1925

~version, pnt. (London, Christie's, 16.II.1934, Lot 104, as Zoffany)

~repl., pnt., 60.7x50.4, c.1750 (François Turrettini, Geneva; G. Salmanowitz, Geneva, 1978). Lit.: L&R 127 repr.

J.49.13 ~?La comtesse d'Hérouville, née Louis Gaucher, dite Lolotte (1724–1765), actrice, maîtresse du 2nd Earl of Albemarle, en turque, pstl, red chlk/pchm, 58.4x47.3 (New York, MMA, inv. 2019.14.16. London, Bonhams, 29.III.1979, Lot 55 repr., est. £3–5000. Harrari & Johns 1980; Charles Agee Atkins, New York; J. Barry Donahue Fine Arts, Inc., New York, 1983; Mrs Charles Wrightsman, New York, 1983; legs 2019). Lit.: Fahy 2005, no. 60 repr.; Bull 2008, fig. 20; Day 2008, p. 276f n.r.; R&L 295, fig. 431; Jeffares 2009; Baker 2023, fig. 10 φδ



=?J.49.1647, q.v.
J.49.1302 =?Une figure turque, pstl, 61x50, 1751, Académie de Saint-Luc 1751, no. 80. Lit.: L&R 133 n.r.; R&L p. 397, as = either R&L 190 [??size] or R&L 295

~étude, counterproof, red, black chlk/ppr, 21.2x15.2 (Louvre RF 1388). Lit.: Bull 2008, fig. 16; R&L p. 396, fig. 312

J.49.1304 ~repl., gch., pstl/pchm, 19x23.5 (Alfred Hausammann, Zurich; Mme Behrens-Hausammann; Paul Josefowitz, London. PC 2008). Lit.: R&L 296, fig. 432 φ



J.49.1306 ~=?Dame franque sur un sofa, pstl, min., 16.5x20 (Liotard; exh. Paris 1771, no. 78; London, 1773, no. 49, b/i; inv. p.m. 1789, no. 6; Marie-Thérèse Liotard)

~cop. XIX^e, pnt./copper, 60x47 (Blois, Herbelin, 2.XII.2015). Lit.: *Gazette Drouot*, 20.XI.2015, p. 277 repr.

??Countess of COVENTRY, a/r Houston print

J.49.1309 ~cop., pstl/pchm, 63x47 irregular (Pera Museum, Suna & Inan Kiraç Foundation. J.-P. Michel 1986. Nice, Hôtel des ventes, Palloc & Fede, 26.II.1994, Lot 85 repr., éc. suisse, inconnue, Ir270,000) φκ



J.49.1311 [= J.49.1314] ~cop., pstl, 74.9x62.2, carved rococo frame (Lord Fitzhardinge, Crawford; Constance, Lady Russell, Swallowfield 1904; Marjorie, Lady Russell. London, Christie's South Kensington, 9.III.2005, Lot 33 repr., est. £800–1200, £900. Nisantasi, Istanbul, Alif Art, 26.v.2018, Lot 378 repr., est. €2000). Lit.: Humbert, Revilliod & Tilanus 1897, no. 40 n.r., as autograph; Russell 1904, repr. opp. p. 109 Φκ



J.49.1316 ~cop., pstl/ppr, 74.5x62, sd → “[?] L Flaming/London/1820” (Brussels, Horta, 23–24.IV.2012, Lot 233 repr., unidentified, est. €1000–1500, €9500. London, Sotheby's, 7.X.2015, Lot 429 repr., as by Fleming, est. £10–15,000) φκ

~other nonpastel versions not listed, *v.* R&L p. 462

J.49.1319 Gualterus Petrus CRAEYVANGER (1739–1776), Commissaris van har Hoog Mog. Buitenlandsche Depêches, bewindhebber van der Oost-Indische Compagnie, regent van het Leproozen-Huis, pstl, 57x46, sd ↗ “Liotard/1756” (desc.: Jacoba Theodora Craeyvanger (1856–1938); desc.: her niece, Marie-Louise Luden, comtesse van Limburg-Stürum (1886–1962); desc.: famille van Limburg-Stürum, Olst; London, Christie's, 10.VII.2014, Lot 152 repr., est. £30–50,000, b/i). Exh.: Liotard 1985, no. 81 repr. Lit.: L&R 276 n.r.; rKD repr.; R&L 320, fig. 464, as sd 1768, destroyed φσ



J.49.1321 Philibert CRAMER (1727–1779), trésorier général, ami de Voltaire, pstl/bl. ppr, 61.5x52.5, c.1758 (le sujet; son fils Gabriel Cramer (1770–1842); son fils Frédéric-Auguste Cramer (1795–1855); son fils Louis-Auguste Cramer (1830–c.1903); sa veuve, née Louise-Adèle Prevost (1835–c.1920) 1906; sa fille, Émilie-Louisa, Mme Camille Rochette (1867–1956); son fils, Gilbert Rochette (1894–1978), Geneva; desc.: PC; adv. *Art newspaper*, .XII.2017, p. 23, Moeller Fine Art, New York; *Burlington magazine*, .IV.2018, .X.2019, p. v, det.; New York, Christie's, 28.I.2021, Lot 53 repr., est. \$400–600,000, \$650,000 [= \$810,000]). Exh.: Geneva 1906, no. 12 bis, as by La Tour; Geneva 1948, no. 71. Lit.: Marguerite Cramer, *Genève et les Suisses: histoire des négociations*, 1914, p.168 repr.; L&R 230 repr.; Candaux 1994, p. 139 repr., as anon., inconnu, huile; R&L 360, fig. 511; “Art market”, *Apollo*, .I.2021, p. 67 repr. φ



Crawley, v. Hochepied
Crébillon, v. Jobyot
Henri-Antoine de CROUSAZ, v. Swiss sch.
M. & Mme Laurent CROZET, v. German sch.

J.49.1325 Henry Frederick, Duke of CUMBERLAND (1745–1790), pstl/pchm, 40x31, 1754 (Royal Collection RCIN 400895). Exh.: Liotard 2015a, no. 32 repr.; New Haven 2017, no. 9.08 repr. [London only]. Lit.: Trivas 1936b, pl. ID repr.; Plumb & Weldon 1977, p. 193 repr.; L&R 181 repr.; R&L 254, fig. 376 φσ



~grav. anon., reverse, “from a Painting by I. E. Liotard”. Lit.: Liotard 2002b, p. 27 repr.; R&L p. 436, fig. 377, as anon.; *Rijksmuseum bulletin*, LXII, 2014, pp. 80f repr., as ?Liotard; Liotard 2015, p. 195, as by Liotard

J.49.1328 Jean DASSIER (1676–1763), graveur et médailleur, pstl, gch./ppr, 55x44, [c.1735] (Geneva, mAHI, inv. D 1998-502. Desc.: famille Ador, Genève; Mme Perrot-Ador, Genève, 1886; London, Sotheby's, 8.VII.1998, Lot 102 repr., est. £20–30,000, £30,000 [=£34,500]; acqu.). Exh.: Liotard 1886, no. 27, as by Liotard in cat., as by La Tour in Revilliod notes; Geneva 2001; Liotard 2002a, p. 87, as c.1746, ?attr. Lit.: Humbert, Revilliod & Tilanus 1897, no. 42 n.r.; *Chronique des arts*, 1999, no. 333 repr.; C. Stoullig, *Genava*, 1999, p. 167; W. Eisler, “The portrait of Jean Dassier...”, *Schweizer Münzblätter*, LI, 2001, pp. 67–69 repr.; W. Eisler, *The Dassiers of Geneva, 18th century European medallists*, Lausanne, 2005, II, pp. 14, 144, pl. II; Liotard 2006, p. 87 repr., as c.1726–30, fully accepted; R&L 10, fig. 11, as a.1730 φσ



Photo courtesy Sotheby's
~grav. J. R. Schellenberg, for Joh. Caspar Füssli, *Geschichte der besten Künstler...*, IV, Zurich, 1774, p. 93. Lit.: R&L, s.no. 10, fig. 18

J.49.1332 Leopold Joseph Reichsgraf von DAUN, Fürst von Thiano (1705–1766), maréchal-général, ?pstl, 1762. Lit.: R&L 414
~grav. Petit. Lit.: R&L p. 555, fig. 571

J.49.1335 Cornelis DEUTZ VAN ASSENDELFT (1730–1788), pstl/pchm, 53x43, sd ♂ “par Liotard/1756”; & pendant: J.49.1336 spouse, née Maria Deutz (1731–1784), sa nièce, pstl/pchm, 53x43, sd ♂ “...liotard/1757” (Enschede, Rijksmuseum Twenthe, inv. BR 541/540. J. van Reenen, Bergen; Zwolle PC dep.). Exh.: Liotard 1985, no. 58/57 repr. Lit.: Humbert, Revilliod & Tilanus 1897, no. 43/44 n.r.; L&R 198, as of Andreas Adolph Deutz Van Assendelft/199 repr.; R&L 328/329, fig. 473/472; Los Angeles 2024b, fig. 29, recto and verso/- φ



Photos R. Klein Gotink, courtesy Rijksmuseum Twenthe

J.49.134 [William Cavendish, 5th] Duke of DEVONSHIRE [(1748–1811)], m/u (Rochampton, 1785, Musgrave's lists)

J.49.1341 [Duchess of DEVONSHIRE, née] Lady Georgiana Spencer, in white dress, pstl, 57x44.5 ov. (Claude A. C. Ponsonby; London, Christie's, 28.III.1908, Lot 10 n.r., 5 gns; Leggatt)

J.49.1342 La belle chocolatière, Chocoladen-Mädchen, Stubenmädchen, ??Fräulein Nandl Baldauf, plus tard Gräfin DIETRICHSTEIN (1757–1815), pstl/pchm, 82.5x52.5, 1744–45 (Dresden P161. Acqu. Algarotti, Venice, 3.II.1745, 120 zecchini, for August III.). Exh.: Geneva 1948, no. 9, as Mlle Baldauf; Liotard 2018, no. 1 & *passim*. Lit.: Algarotti, *Opere scelte*, Milan, 1823, III, p. 166, letter to Mariette, 13.II.1751; Riedel & Wenzel 1765, p. 243; Johann August Lehninger, *Abrégé de la vie...galerie de Dresde*, 1782; Johann Joseph Kausch, *Ausführliche Nachrichten über Schlesien*, 1796, “sehr hohen Werth”; Hübner 1856, no. 1947; Hübner, *Die Dresdner Galerie in Photographien nach den Original-Gemälden*, 1870, photo repr., Humbert, Revilliod & Tilanus 1897, no. 1 repr., as of Baldauf; Brieger 1921, repr. p. 104; Posse 1929, no. P161 repr.; Manners 1933, pl. III; Fosca 1956, p. 29 as of Mlle Baldauf, future Gräfin Dietrichstein; Kalnein & Levey 1972, pl. 133; L&R 76 repr. clr pl. x; Vienna 1980, fig. 148; Liotard 1985, fig. 5; Marx 1992, p. 438; Levey 1993, fig. 197; Roethlisberger 2002a, fig. 1, 2; Marx 2005, I, p. 676, II, p. 624, no. 2279; Henning & Marx 2007, pp. 107ff repr.; Tom Lubbock, *Independent arts & books review*, 14.XII.2007; Tarabra 2008, p. 297 repr.; Roethlisberger 2006; R&L 130, figs. 221, 220; Mazza Boccazzi 2009, p. 165f n.r.; Warsaw 2009, p. 136 repr.; Burns & Saunier 2014, p. 92, det. repr.; Jeffares 2015c, with Liotard receipt; Karlsruhe 2015, p. 54 repr.; Liotard 2015a, fig. 1; [Jeffares 2018a](#); Lajer-Burcharth 2018, fig. 1.52; Tessa Murdoch, “How Liotard’s Chocolate Girl charmed the city of Dresden”, *Apollo*, XII.2018; Christopher Baker, review of Liotard 2018, *Burlington magazine*, IV.2019, p. 356f repr.; Carriera 2023, repr. p. 97; Liotard 2023, fig. 58; Baker 2023, fig. 17 [identification with Gräfin Dietrichstein, first propounded in 1840, is chronologically impossible] φδσ



~[cop.], dessin, encre/4 f. ppr, 83.8x58.5, inscr. “FT/Trait du/Stubmensch/de la/Gallerie de Dresde”, L.2756b (Geneva, mAHI, inv. 1935-8. François Tronchin. Tilanus). Exh.: Liotard 2015a, h.c. [London only]; Liotard 2018, no. 2 & p. 44 repr. Lit.: Roethlisberger 2002a, fig. 17; R&L p. 327, fig. 223; Jeffares 2023c, ??Liotard

J.49.1343 ~cop., m/u, Matthias Oesterreich, comm. Graf Brühl 1756. Lit.: Liotard 2018, p. 52

J.49.1345 ~cop., pstl, 81.2x54.1 [a.1775] (*Vergächnis der Gemälde-Sammlung des verstorbenen Obersten Quintus Iulius*; [Karl Gottlieb Guichard (1724–1775)] inv. p.m., Potsdam, 1784, no. 113, copie)

~grav. Carl von Pechwill (1742–1789) 1782

~cop., v. *Stuten*, 1787

~cop., v. *Lauer*, 1797

~cop., v. *Hoffmann a/r Lauer*, 1800

~cop., v. *Saint-Mémin*

~grav. Hanfstaengel 1836; Augusta von Buttler (1796–1857) 1837; Alphonse Léon Noël (1807–1884) & Lemerrier c.1839; James Posselwhite (1798–1884) c.1842; Albert Henry Payne (1812–1902) c.1850; François-Eugène Burney (1845–1907) 1885; Emil Leopold Hodermann (1831–p.1897), a.1887; Erich Gruner (1881–1966) 1955, for 10 Pf. Stamp, DDR &c. [v. Tilanus; Liotard 2018 etc.]

J.49.1347 ~cop., pstl/ppr, 52.5x37.5 (Berlin, SMB, inv. A I 100. Acqu. J. W. Mossner 1874). Lit.: Wesenberg & al. 2017, p. 498 repr., attr. Lauer [?] φδκ



J.49.1352 ~cop., pstl/ppr, 26x20 ov. (Geneva, mAII, inv. 1921-4. Lord Taunton, Quantock Lodge, Somerset; Albert Berthel, dealer, London; acqu. 1920 as repl. Dep. Fondation Gottfried Keller, Berne). Lit.: Fosca 1928, repl.; Gielly 1935, repl.; Trivas 1936a, contesté; L&R, s.no. 76, cop.; Buysens 1988, no. 201, cop.; Roethlisberger 2002a, no. 21, fig. 24; R&L p. 332 n.r., ?XIX^e φδκ



J.49.1354 ~cop., inscr. *verso* "Portrait of Charlotte Baldauf. Drawn by Liotard during his stay at the house of Mr Baldauf, banker of Vienna. Charlotte Baldauf became Countess Dietrichstein. From the collection of Lord Taunton (E. Labouchere)" (Orleans House Gallery, Twickenham)

~cop., pnt., 61.6x40 (Sacramento, Crocker Art Museum, inv. 1872.572). Cat. 1910, no. 580

J.49.1356 ~cop., pstl, 81.5x51.5 (Schloß Nikolsburg; Fürst Dietrichstein, Argentine, 1987). Lit.: Roethlisberger 2002a, no. 5 n.r.; R&L p. 332 n.r.

~cop. M. Beane, pnt., 83.5x53.6 (Museums Sheffield, inv. VIS.785. Don J. G. Graves 1929)

J.49.1357 ~cop., pstl/pchm, 86x54.5 (Warsaw, Muzeum Narodowe, inv. 210856. Maurycy Stanislaw Potocki (1894–1949), Jablonna). Exh.: Warsaw 2015, no. I.97 repr. φκ

~cop., m/u (R. Graf von Thurn. G. F. Walther, Dresden, 1812). Lit.: Walther 1812, no. 127 n.r.

J.49.1358 ~cop. Genosa, pstl, 83x54, 1839 (Vire, 30.III.2008). Lit.: *Gazette Drouot*, 7.III.2008, p. 195 repr.

~cop. C. Naumann, pnt., 42x29, sd 1849 (Berlin, Lepke, 30.VI.–1.VII.1938, Lot 799)

J.49.136 ~cop. Franz Schmidt (1816–1891), pstl, 1852 (Ormond; PC 2002). Lit.: Roethlisberger 2002a, no. 1 n.r.; R&L p. 332 n.r.

J.49.1361 ~cop. Falisson ou Falipon, pstl (comm. Goupil & Cie, 1852, ff150, cadre ff70; sold, 15.III.1852, ff320, Raper, New York)

J.49.1362 ~cop. Gustav Fährig [or Fürgig], pstl, 82x52.5, 1856 (Kloster Salem; Markgraf von Baden; Baden-Baden, Sotheby's, 5–21.X.1995, Lot 2413 repr., est. DM 4–6000) φδκ



J.49.1364 ~cop. Gustav Fährig, pstl/ppr, 84.2x54.7, 1857 (Paris, Institut néerlandais. Paris, Drouot, 25.IV.1952; acqu. Frits Lugt). Lit.: Roethlisberger 2002a, no. 2, fig. 21; R&L p. 332 n.r. φδκ



J.49.1366 ~cop. Gustav Fährig, pstl/ppr, 82x52.5, sd *verso* "Gustav Fürgig Dresden 1880" (London, Sotheby's, 5.VII.2000, Lot 217 repr., as sd 1880, est. £8–10,000; PC 2002). Lit.: Roethlisberger 2002a, no. 3, fig. 22 φδκ



~cop., watercolour/porcelain (Robert F. Cooke; sale p.m., London, Christie's, 29.I.1892, Lot 1 n.r.)

~cop., pnt., 89.5x55.9 (New York, Sotheby's, 28.V.1999, Lot 163 repr.)

~cop. Ernst Junige, pnt., 86.6x55.3 (London, Phillips, 20.IV.2000, Lot 16 repr.). Lit.: Roethlisberger 2002a, no. 17 n.r.; R&L p. 332 n.r.

~cop. Friedrich August Schlegel (1828–1895), watercolour, gch., 46x32, Dresden (offered eBay 2015)

J.49.1371 ~cop., m/u (Sir John Murray Scott, Paris, rue Laffitte, inv. p.m., 1912, ff60). Lit.: Ingamells 1989, app. III, no. 96 n.r.

~cop. 1914, pnt., 84x55, stamped *verso* "Copie nach No 161 Pastell der Königl. Gemalde-

Galerie zu Dresden 1914" (Havnen, Bruun Rasmussen, 5.V.2010, Lot 607 repr., est. SKr3000)

J.49.1374 ~cop. A. Fleischman, XIX^e–XX^e, pstl, 85x52.5 (Paris, Drouot, Blanchet, 23.IX.2011, Lot 135 repr., est. €800–1000) φδκ

J.49.1376 ~cop., pstl, 85x55 (Versailles, Chapelle, 10.V.1975). Lit.: Roethlisberger 2002a, no. 6

J.49.1377 ~cop., pstl, 84x51.7 (London, Phillips, 22.II.1994, Lot 114 repr., est. £700–900, £1400) φδκ



J.49.1379 ~cop., pstl (Senlis, Pascal Berquat & Thierry May, date lost, repr. cover) φδκ



J.49.13791 ~cop. R. Vetten, XIX^e–XX^e, pstl/ppr, 85x55, inscr. "RVetten / n. Raph. Mengs" (Rudolf Weigang, Bautzen. Dresden, Schmidt, 2.XI.2024, Lot 271 repr., est. €1800–2000) φδκ

J.49.1381 ~cop., pstl/pchm, 82.2x52.2 (London, Christie's South Kensington, 16.IV.1997, Lot 184 repr., follower of Liotard; PC; New York, Sotheby's, 26.I.2000, Lot 196 repr., as a/r Liotard; Derek Johns). Exh.: Liotard 2015a, h.c., as attr. Lit.: Roethlisberger 2002a, no. 16, fig. 23, cop. φδκσ



Photo courtesy Derek Johns

J.49.1384 ~cop., pstl/pchm, 83x51.5 (Vienna, Dorotheum, 3.X.2000, Lot 56 repr., as follower, est. €7,700–11,000. London, Bonhams, 30.X.2007, Lot 20 repr., a/r Liotard, est. £400–600. Paris, Drouot Estimations, 24.I.2020, Lot 47 repr., as on ppr, est. €800–1000; Paris, Drouot Estimations, 14.V.2020, Lot 17 repr., est. €650–700) φδκσ



J.49.1386 ~cop., pstl, 84.5x53.5 (Crewkerne, Lawrence's, 9–10.VII.2009, Lot 1273 repr., est. £300–400; Crewkerne, Lawrence's, 13–16.X.2009, Lot 2917 repr., est. £150–200. Dorchester, Duke's, 12.IV.2012, Lot 154 repr., as 19th century portrait of 17th century lady, est. £100–200; Donnington, Dreweatts, 30.I.2013, Lot 66 repr., follower of Liotard, est. £300–500; Lewes, Gorrings, 27–28.III.2013, Lot 1738 repr., est. £800–1200; Lewes, Gorrings, 4–5.XII.2013, Lot 1719 repr., est. £800–1200; Lewes, Gorrings, 5–6.II.2014, Lot 1007 repr., est. £400–600) φδκ



J.49.1388 ~cop., detail, pstl/ppr, 31x24 (Geneva, Koller, 13.XI.2000, Lot 1184 n.r., est. SwFr1200–1800, b/i)

J.49.1389 ~cop., pstl, 81.2x50.8 (Geneva, Koller West, 25.III.2002, Lot 6538 repr., est. SwFr4–6000, SwFr5500). Lit.: Roethlisberger 2002a, no. 20 n.r. φδκ



J.49.1391 ~cop., pstl/ppr, 82.5x52.5 (Milan, Finarte, 9.VI.2005, Lot 700 repr., attr. J.-F. Guillibaud, inconnue, est. €15–18,000, b/i) φδκ



J.49.1393 ~cop., pstl/ppr, 84x53 (Vienna, Dorotheum, 4.X.2011, Lot 138 repr., est. €1200; Vienna, Dorotheum, 12.XII.2012, Lot 138 repr., est. €1000) φδκ

J.49.1395 ~cop., pstl/pchm, 83.8x54, in Dresden frame (Crewkerne, Lawrence's, 5–6.VII.2012, Lot 1387 repr., est. £2500–3500, £4000. London, Christie's South Kensington, 6.XII.2012, Lot 146 repr., est. £6–8000, b/i) φδκσ

J.49.1397 ~cop., pstl/ppr, 83x50 (Paris, Drouot, Beussant-Lefèvre, 7.VI.2013, Lot 31 repr., XIX^e, est. €3–5000) φ

J.49.1398 ~cop. Max Schrader, Dresden, c.1897, pstl/board, inscr *verso* (PC 2019) φ

J.49.1399 ~cop. Johanna Carolina Krieger (c.1802–1884), pstl, 84x52, s v “Lina Krieder pinx...”, in a Dresden frame (Lewes, Gorrings, 1.IX.2020, Lot 355 repr., est. £1000–1500) φδκ

J.49.13991 ~cop., pstl, 56x34.5 (Leyburn, Tennants, 8.I.2022, Lot 1192 repr., est. £100–200) φκ

J.49.13993 ~cop., pstl, 40x29 (Grenoble, Sadde, 4.VI.2024, Lot 117 repr., est. €100–150) φκ

~cop., pnt., 84.2x54.6 (Paris, Bordereau, 27.VI.2001, Lot 167. PC 2015; Bernheimer, London, Sotheby's, 25.XI.2015, Lot 265 repr.)

~cop., pnt./canvas, 85x53, s “v. Franke”, c.1860 (Bielefeld, OWL, 21.V.2016, Lot 42106; Bielefeld, OWL, 5.XI.2016, Lot 148)

~other copies in oil, enamel, min., porcelain, pstl etc.

~overpainted prints in various colours and styles, one as by Picasso, by Strawwalde [Jürgen Bötcher (1931–)] (Berlin, Auctiondata, 1.VI.2016, Lot 119ff)

J.49.1403 Charles, 12th Viscount DILLON (1745–1813), pstl/ppr, 62x49, unfinished (desc.: Phipps family; Marquess of Normanby, Mulgrave Castle, 1956; PC 2008). Exh.: London 1956, no. 587. Lit.: R&L 501, fig. 705 φ



J.49.1405 ~pendant: Viscountess DILLON, née Henrietta Phipps (1757–1782), pstl/ppr, 62x49, sd v “J. E Liotard, 1774” (desc.: Phipps family; Marquess of Normanby, Mulgrave Castle, 1956; PC 2008). Exh.: London 1956, no. 587. Lit.: L&R 308 repr.; R&L 500, fig. 704 φ



J.49.1409 Henry Pleydell Dawnay, 3rd Viscount DOWNE (1727–1760), soldier, Lord of the

Bedchamber to Prince George, pstl/[?]ppr, 58x48 (Wykeham Abbey, desc.). Exh.: London 1968c, no. 45. Lit.: Millar 1963; R&L 279, fig. 412 φ



~pendant, George III, v. *English sch.*

J.49.1412 Mme DUFOUR, ?pstl, inferred from drawing

~dessin (Winterthur, Museum Oskar Reinhart am Stadtgarten). Lit.: R&L 512, fig. 719

Dunant, v. Hochepied

Egerton, v. Baltimore

J.49.1417 Countess of EGREMONT, née Alicia Maria Carpenter, later Gräfin von Brühl (1729–1794), in a pale blue dress, holding a reel of silk, pstl/pchm, 68.6x54, 1753 (Petworth. Comm. sitter .VI.1753, 25 gns, recorded in Petworth accounts, PHA/9/7458). Lit.: Collins Baker 1920, no. 565* n.r., L&R 159 repr.; R&L 271, fig. 399; Esther Chadwick, “Patterned with paper pictures: the print room at Petworth House”, 20.XI.2020, *Art & the Country House* φσ



~v. *Miss Bacon supra*

~cop. (*face*) Thomas Phillips, ½ length, ¾ right, flowers in hair, white dress, brown-rose mantle, pnt., 73x58.5, “Ps pinxt Petworth 1799 – face after Liotard” (Petworth, National Trust, inv. 485051). Lit.: Collins Baker 1920, no. 131 n.r.; R&L, p. 444 “sans rapport avec Liotard” [??]

J.49.1421 Princess ELIZABETH Caroline (1741–1759), pstl/pchm, 39x30, 1754 (Royal Collection inv. RCIN 400902). Exh.: London 2014b, no. 243 repr.; Liotard 2015a, no. 30 repr.; New Haven 2017, no. 9.07 repr. [London only]. Lit.: Trivas 1936b, pl. IIB repr.; Millar 1963, no. 583 repr.; L&R 179 repr.; R&L 252, fig. 374; Jeffares 2015h, repr. φσ



J.49.1423 ~cop., pstl/ppr, 38x30 (Royal Collection RCIN 401354). Lit.: Millar 1963, no. 590 n.r.; R&L p. 315 n.r., as cop.; Jeffares 2015h, repr. [cf. Sykes] φκ



~cop. Francis Sykes, ov., enamel, sd "F. Sykes Pinx^t 1759" (Sophie Matilda of Gloucester (1773-1844); legs: her goddaughter Princess Alice, Großherzogin von Hessen; her son, Ernst Ludwig Großherzog von Hessen und bei Rhein). Lit.: Biermann 1917, no. 273 repr.; Jeffares 2015h, repr.

~cop., attr. Francis Sykes, enamel, 4.5x3.3 ov. (Royal Collection, RCIN 421844). Lit.: Jeffares 2015h, repr. [new assoc.]

J.49.1427 Kaiserin ELISABETH Christine von Habsburg, née von Braunschweig-Wolfenbüttel (1691-1750), pstl/pchm, 72x55 ov., 1743-45 (Weimar, SWKK, G 63, inv. KK 11656. Oberes Belvedere, Cabinet blanc, Vienna, 1781. Acqu. a.1872). Lit.: Mechel 1784, p. 142, no. 3; Humbert, Revilliod & Tilanus 1897, no. 12 n.r.; L&R 68 repr.; Vienna 1980, no. 34,06, fig. 146.7; R&L 117, fig. 192 Φ



Photo courtesy Stiftung Weimarer Klassik und Kunstsammlungen
~grav. J. C. von Reinsperger. Lit.: R&L p. 315, fig. 193

J.49.1431 ~cop., pstl, 71x58 (Vienna, Bundesmobiendepot, inv. MD 195038). Lit.: L&R, s.no. 68 n.r.; R&L p. 315 n.r.

J.49.1432 ~cop., pstl/pchm, 68.7x57.8, rectangular (PC a.1980; Vienna art market; London, Sotheby's, 30.XI.1983, Lot 237, b/i; Kalaudy, Vienna. Wolf Dietrich Hassfurter, Vienna; acqu. 1986 Woodner, New York; London, Christie's, 6.VII.1993, Lot 185 repr., est. £20-30,000, b/i). Exh.: Vienna 1980, no. 34,06 repr., fig. 146.6; London 1987e, no. 79 repr.; ?Washington 1995, no. 99 repr. Lit.: Schmidt 1931, repr.; L&R, s.no. 68 n.r.; R&L p. 315, fig. 198 Φσ



~cop. Gian-Antonio Guardi, pnt., 72.5x55.5, Venice, 1745 (Schulenburg. London, Christie's, 11.XII.1992, Lot 18 repr.). Lit.: R&L p. 315, fig. 199

~cop. min., numerous. Lit.: R&L pp. 315f n.r.

J.49.1436 ~?pstl, 78.5x54 (prince Charles de Lorraine; inv. p.m., 6.X.1780, no. 18, with grav. of same size)

ÉLISABETH de France, v. Infante
ELISABETH Friederike Sophie, v. Friederike
Épinay, v. La Live

Mary, Countess of ERNE (Ickworth) [v. Hamilton]

J.49.1441 Countess of ESSEX [née Lady Elizabeth Russell (-1784)], pstl, cadre rocaille (Jacques Helft a.1945; procédure close 16.I.1961). Lit.: Répertoire des biens spoliés, item 216, OBIP no. 42.709 n.r.