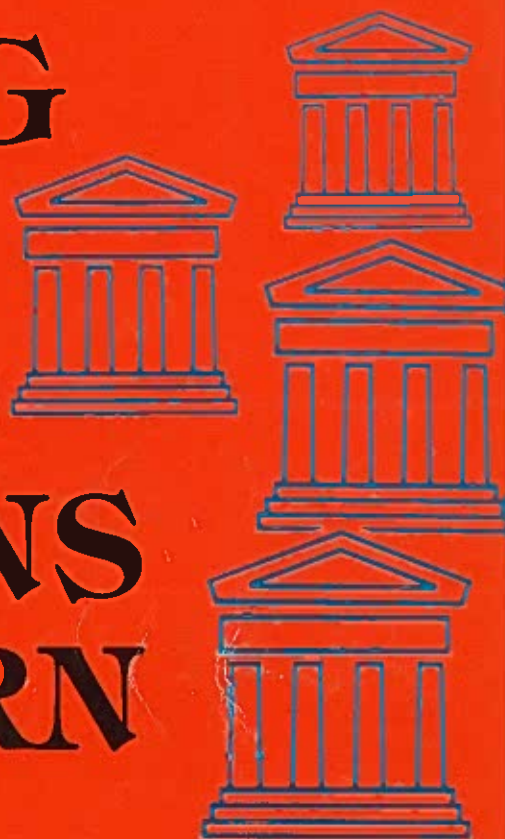


THE SOUTHERN AFRICAN  
MUSEUMS ASSOCIATION  
1936-1986



# THE MAKING OF THE MUSEUM PROFESSIONS IN SOUTHERN AFRICA



CK BRAIN  
M C ERASMUS



TRANSVAAL MUSEUM

# The Southern African Museums Association

1986

## Office Bearers

### President

Dr C. K. Brain  
Transvaal Museum, Pretoria

### Vice-President

Mr C. S. Holliday  
King George VI Art Gallery  
Port Elizabeth

### Immediate Past-President

Col. G. R. Duxbury  
S.A. National Museum of  
Military History, Johannesburg

### Honorary Secretary

Mrs M. C. Erasmus  
Transvaal Museum Pretoria

### Editor

Dr E. H. Bigalke  
East London Museum

## Council

Dr M. A. Cluver, South African Museum, Cape Town  
Dr R. Liversidge, McGregor Memorial Museum, Kimberley  
Dr J. J. Oberholzer, Durban Museums and Art Gallery  
Mr A. P. Roux, S.A. National Cultural History Museum, Cape Town  
Mr C. M. Till, Johannesburg Art Gallery  
Mr B. C. Wilmot, Albany Museum, Grahamstown  
Dr J. H. Wallace, Port Elizabeth Museum Complex  
Mrs E. A. Voigt, Transvaal Museum, Pretoria

## Co-opted Members

Dr E. H. Bigalke, East London Museum  
Miss H. F. L. Immelman, Transvaal Provincial Museum Service  
Prof. A. R. de Villiers, National English Literary Museum, Grahamstown

## SPONSORS OF THIS PUBLICATION

Grateful acknowledgement is made to the sponsors of this publication for their contributions.

AECI Limited  
Anglovaal Limited  
Gencor Development Fund  
Goodyear Tyre and Rubber Co. (S.A.) (Pty) Ltd  
Hoëveld Makelaars Pty Ltd  
Rembrandt Tobacco Corporation, S.A. Limited  
Transvaal Museum Board of Trustees  
Volkscas Ltd

Cover design by Imogen Chesselet

THE MAKING OF THE  
**MUSEUM PROFESSIONS**  
IN SOUTHERN AFRICA

C. K. BRAIN  
and  
M. C. ERASMUS  
Transvaal Museum

Published by the Transvaal Museum in association with SAMA  
Uitgegee deur die Transvaalmuseum in medewerking met SAMV

April 1986

THE MINDS OF THE  
MUSEUM PROFESSIONALS

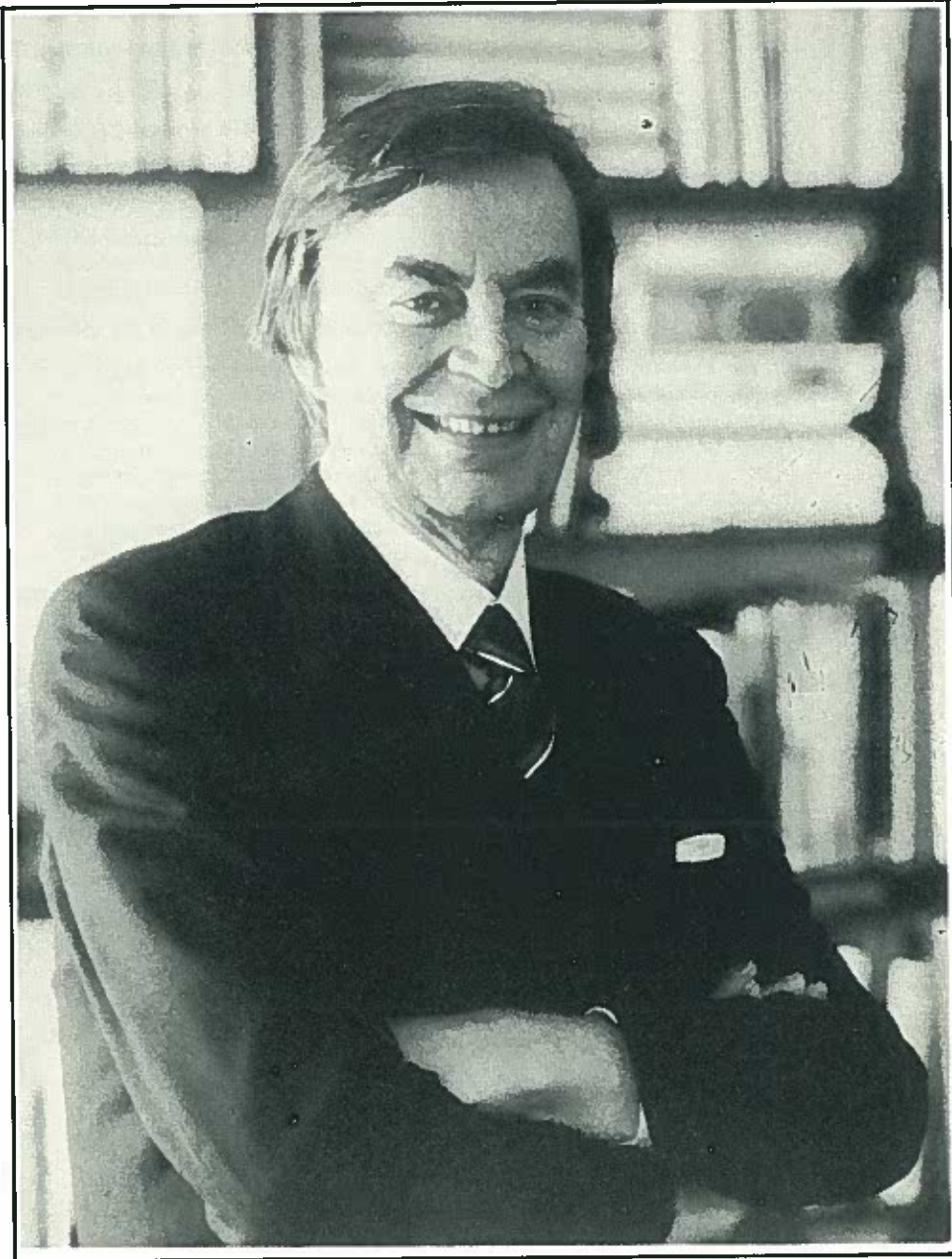
Transvaal Museum/Transvaalmuseum  
© 1986

ISBN 0 907990 05 3

Printed by CTP Book Printers, Cape  
BD5216

Printed and published by CTP Book Printers, Cape Town

## SAMA's First Patron



**Dr Anthony Edward Rupert**

In January 1986, Dr Rupert graciously accepted our invitation to become the first Patron of the Southern African Museums Association. Well known throughout the country as the Founder and Chairman of the Rembrandt Group of Companies, the esteem in which Dr Rupert is held is indicated by the fact that four South African universities have already bestowed honorary doctorates upon him. His involvement in the promotion of southern Africa's natural and cultural heritage is reflected in the fact that he is President of the Southern African Nature Foundation, Vice-President of the World Wildlife Fund and Chairman of Historical Houses of South Africa Limited.

We warmly welcome Dr Rupert into our community of museum enthusiasts.

# Contents

<b>The Nature of the Museum Profession</b> .....	1
<b>Before SAMA</b> .....	2
<b>SAMA's Inaugural Meeting</b> .....	5
<b>SAMA's 50 Years</b> .....	6
The Presidents and Vice-Presidents .....	6
The indispensable Honorary Secretaries .....	22
The Association's Journal: <i>SAMAB</i> .....	22
A forum for discussion and debate .....	23
<b>The Making of the Museum Professions in Southern Africa</b> .....	27
Training for the museum professions: the work of the Education Committee .....	27
Managing museum collections: the work of the Documentation Group .....	30
Standards for Museums: the work of the Accreditation Committee .....	31
The promotion of museum research .....	33
Ethics for museum professionals .....	34
The contribution of museum boards .....	35
A Guide to the Museums of Southern Africa .....	35
Two related committees .....	37
<b>What Of SAMA's Future?</b> .....	38
Assessing SAMA's strengths and weaknesses .....	38
<b>A Lighter Side of Museology: Conviviality and Pleasure</b> .....	39
<b>This Curious Profession</b> .....	40
<b>A Last Word</b> .....	41
<b>Acknowledgements</b> .....	42
<b>Literature Cited</b> .....	42
<b>The Membership of SAMA</b> .....	44

## The Nature of the Museum Profession

In what respect is a museum different from any other cultural or scientific organization? Simply in this: *a museum is built around a permanent collection of items having cultural or scientific significance to the community.* Were a museum to lose its collection, it would become an institution of a different kind.

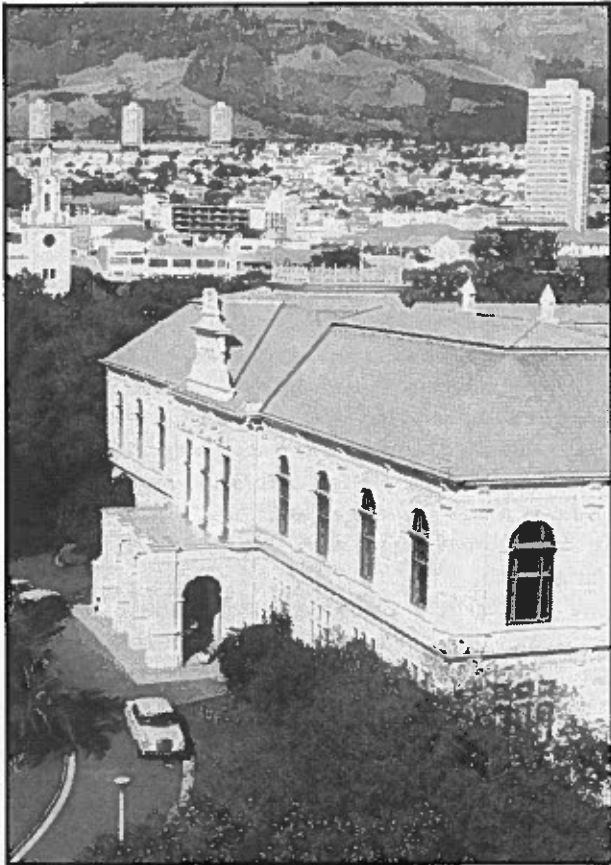
From time to time there is discussion as to what the most important functions of a museum might be. What is a museum's lifeblood? *'It has been said on various occasions that education is the lifeblood of museums, that research is the lifeblood of museums, that exhibitions are the lifeblood of museums and more recently that "Tourism is the lifeblood of museums"'. I am here today to remind you that it is collections that are the lifeblood of our museums. Their care, conservation, authentication and documentation set museums apart from any other organisation. Without collections research would be better carried out in a scientific institute, education in schools and colleges, exhibitions at trade fairs and shows and tourism at theme parks.'* So said Miss Nancy Tietz<sup>1</sup> when she addressed delegates at the 1985 SAMA conference in Grahamstown.

With the realization that the *collection is the core of the museum* comes the understanding that the people who do such different things in museums all serve a common purpose: the *care, study and interpretation of the collection.* Although the common purpose is a simple, single one, the ramifications of activity around it are seemingly endless, sufficiently so in fact for people<sup>2,3</sup> to question whether there is, in fact, a *museum profession* at all. The answer, it seems, is clear: within museums many professions are practised, but all ultimately serve the same goal. Former separations of museum staff into categories such as "professional officers" and "technicians" are misleading in that they imply that one category of worker is more "professional" than another. Instead, what we are dealing with is a *plurality of professions* as A. E. Parr<sup>4</sup> has termed it, all being practised within the museum framework. The profession of a museum administrator is very different from that of a restorer or taxidermist, but each of these is a professional activity in its own right, requiring its own training and expertise.

In the promotion of these museum professions the Southern African Museums Association has made a major contribution, and it is the purpose of this historical review to document the contribution that has been made, while following the course of the Association through its 50 years of existence.

# Before SAMA

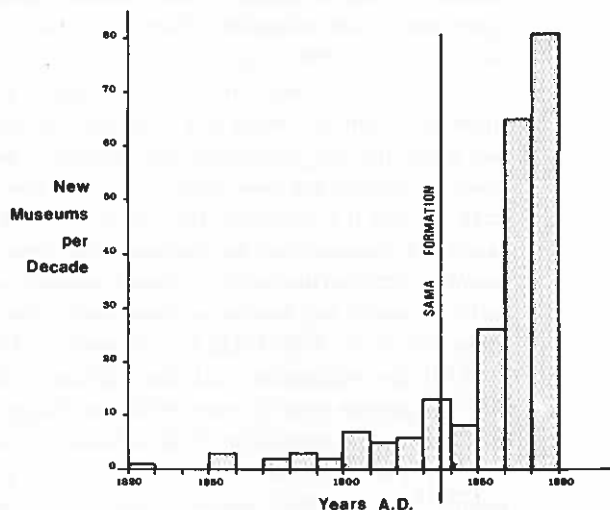
The birth of the Southern African Museums Association came long after the establishment of many southern African museums. Our oldest museum, the South African Museum in Cape Town, was established in 1825 with Dr Andrew Smith as superintendent, but, as Mr Hans Fransen<sup>5</sup> has pointed out,



2. The oldest museum in southern Africa, the South African Museum in Cape Town, photographed in 1975 on the occasion of its 150th anniversary.

*'The history of museums in Southern Africa as professionally run and officially recognised scientific institutions, however, can be said to begin in 1855 when the old South African Museum, virtually defunct after Smith's departure in 1837, was re-established by Government Proclamation. In the same year a similar museum, the Albany Museum, was opened in Grahamstown, capital of the Eastern Cape Province. In 1857 the S.A. Museum Incorporation Act, which provided for the appointment of a Board of Trustees and of a full-time Curator, enhanced the status of the S.A. Museum, which for long set the pattern for most of the larger museums that followed it. Port Elizabeth was the third city to get its museum in 1856, while the Free State Republic was early on the scene with its museum in Bloemfontein (now the National Museum) in 1877. Other centres followed: in 1884 King William's Town was given a museum (the third in the Eastern Province, as against one in the Western Cape!), in 1887 Durban, in 1893 Pretoria (the Transvaal Museum) and in 1903 Pietermaritzburg (the Natal Museum).'*

On the accompanying histogram it is possible to trace the creation of new museums per decade in southern Africa. It will be seen that the Southern African Museums Association entered the picture just before the years of the second world war with their consequent depression of museum activity. However, the decade of the 1950s saw a marked increase in the number of new museums established, followed in the sixties and seventies by a highly dramatic upswing resulting from the creation and expansion of provincial museum services. The indications are that this brief period of intense flowering is now subsiding and a period of consolidation of newly established museums is likely to follow.



3. Diagram showing the rate at which new museums were created in southern Africa per decade from 1820 onwards.

It is interesting to notice that the impetus for the formation of SAMA came from beyond the borders of southern Africa, in fact from the Museums Association of Great Britain. When he died, the philanthropist Andrew Carnegie left ten million dollars to be expended in various parts of the British Empire on cultural activities and, in 1927, the Carnegie United Kingdom Trust invited Sir Henry Miers, then President of the Museums Association, to make an investigation of museums and art galleries in Great Britain. His survey, the results of which were published in 1928,<sup>6</sup> was so successful that three years later it was decided to carry out similar surveys throughout the British Empire, with funds from the Carnegie Corporation of New York. Once again the task was entrusted to Sir Henry Miers and he was accompanied by Mr (later Sir) S. F. Markham, then Secretary of the British Museums Association.

Writing to the High Commissioner for the Union of South Africa in November 1931, Mr Markham explained that *'the purpose of our projected visit to South Africa is to visit every museum there with a view to compiling a complete Directory of South African Museums, whether governmental, university or school museums, and to prepare a*

insert ① ↑

report for the Carnegie Corporation of New York indicating to them ways and means by which they might be able to assist the non-governmental museums.'

Following negotiations with the Secretary of the Interior in South Africa and with individual museum directors, Sir Henry Miers and Mr Markham travelled throughout southern Africa during the first half of 1932 and drew attention to the fact that although some excellent museums existed they were scattered widely and that communication and co-operation between them left much to be desired.

As a direct result of the Miers/Markham visit, the Secretary for the Interior sent a circular<sup>7</sup> to 'All Museums and Art Galleries in the Union' on 3 April 1935 stating that a Standing Committee on State-Aided Institutions, such as museums and art galleries, had been instituted and, at its first meeting, had discussed the co-ordination of museum activities. This Advisory Committee was made up of the Secretary for the Interior, Mr P. Hoogenhout as Chairman, Sir J. Carruthers Beattie, Dr P. J. du Toit, Professor J. F. Dingemans, Professor J. W. Bews and Mr F. W. Masey. At this first meeting it was agreed that steps should be taken to form a Museums Association on lines similar to those in Britain and the United States. It was recommended that an annual conference of this body should be held so that contact and co-operation between the museums could be promoted. Furthermore, it was suggested that the inaugural meeting of the proposed Museums Association should be held in Paarl during July 1935, immediately after the annual meeting of the South African Association for the Advancement of Science. With this first circular to all museums and art galleries in the country went a *Draft Constitution of the proposed South African Museums Association*<sup>8</sup> which stated that: 'The objects of this Association should be —

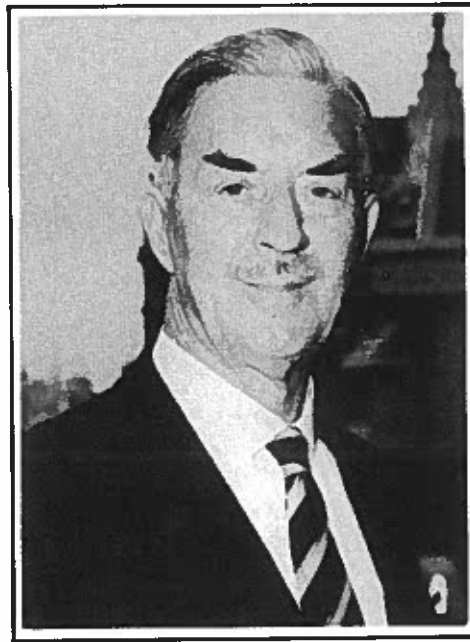
- (1) to encourage helpful relations amongst museums of all kinds, including art galleries, and persons interested in such institutions,
- (2) to improve and extend the museum service in South Africa,
- (3) to increase and diffuse knowledge of all matters relating to museums and art galleries, and to apply such knowledge to South African conditions,
- (4) to organise short demonstration courses of instruction for the benefit of museums and art gallery assistants'.

Regrettably there were not enough museum representatives present at the Paarl meeting in 1935 to make the formation of the Association possible with the result that in February 1936 Mr Hoogenhout, Secretary for the Interior, wrote<sup>9</sup> to Mr C. J. Swierstra, Director of the Transvaal Museum, as follows:

*'With further reference to the question of establishing a Museums Association in the Union, I am directed to inform you that this matter was again the subject of discussion at the last meeting of the Advisory Committee on State-Aided institutions which met in Cape Town recently.*

*Apparently the establishment of this Association has not met with any great measure of enthusiasm or success. The Committee noted with satisfaction, however, that you have been taking an active interest in the formation of such an Association and expressed the hope that you would continue your activities and that every endeavour would be made to achieve the object in view. It was suggested that you be approached with a view to ascertaining whether you would be good enough to act as convenor of a meeting for the establishment of such an Association as soon as possible.*

*In this connection, I desire to add that the Chairman of the Carnegie Advisory Board in South Africa has agreed to pay the rail fare of one representative of each Museum so represented at the proposed meeting. The Carnegie Board is also prepared to pay subsistence to such representatives at the rate of £1 per diem for a period not exceeding two days.'*



4. Sir Henry Miers (left) and Mr S. F. Markham, respectively the President and Secretary of the British Museums Association in the early 1930s, when they made a survey of southern African museums and urged the formation of a Southern African Museums Association.

Three days later, on 18 February 1936, Mr Swierstra accepted the invitation to act as Convener of the first meeting of a Museums Association. He wrote to the Secretary for the Interior saying that he planned to call the meeting at Kimberley during April, since the Director of the McGregor Museum in Kimberley, Dr Maria Wilman, had proposed that this would be a convenient venue. Furthermore, he mentioned that he would like to invite representatives from adjoining territories such as Rhodesia and South West Africa to attend the meeting and asked whether this policy would be acceptable to the Secretary for the Interior. The reply came strongly in the affirmative, indicating that right from its inception the Museums Association was intended to be regional in its scope, rather than purely South African.

On 28 March 1936, Mr Swierstra sent to all museums and art galleries in southern Africa a 'Notice to convene a meeting for the inauguration of a Museums Association for South Africa,' together with a memorandum outlining events relating to the project thus far. The meeting was scheduled for 23-24 April 1936 at the McGregor Memorial Museum, Kimberley.

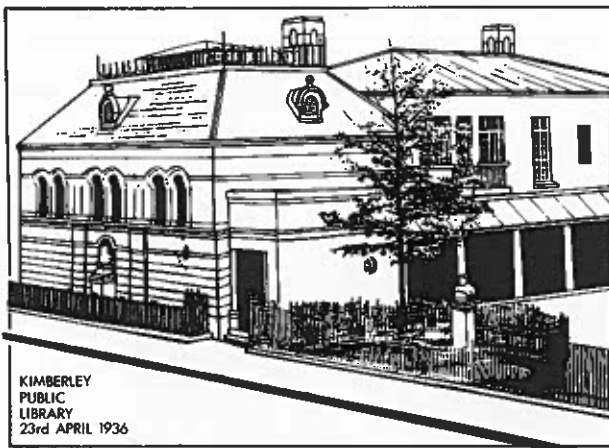
5.

Dr Maria Wilman, Director of the McGregor Memorial Museum in Kimberley for 38 years from 1908 onwards. Born in Beaufort West in 1867, she graduated at Cambridge before returning to work at the South African Museum in Cape Town. It was at her invitation that SAMA's Inaugural Meeting was held in Kimberley in 1936.



# SAMA's Inaugural Meeting

On 23 April 1936, 22 delegates representing 19 institutions met in Kimberley for the Inaugural Meeting of the Museums Association. In view of the number of people involved, the meeting was held in the Kimberley Public Library, the "Chinese Room" being made available for the occasion. The meeting was chaired by Mr C. J. Swierstra. The Mayor of Kimberley, Councillor W. H. Gasson, welcomed the delegates and expressed the hope that they would be successful in launching the Museums Association. The Chairman thanked the Mayor for his welcome, indicated the object of the meeting and briefly outlined the previous efforts that had been made to form a Museums Association in South Africa. Mr E. C. Chubb, Director of the Durban Museum and Art Gallery, then addressed the meeting on *The advantages of forming a South African Museums Association*.<sup>10</sup> Among the points he made were these: 'An organisation such as that we contemplate establishing should tend to broaden our outlook, to overcome our parochialism and insularity, and lead us to realise that while directing our efforts primarily towards the institution with which we are concerned, we can also have in mind its relationship to the museum service of the country as a whole. For our institutions, whether municipal, state-aided or national, are not only serving the immediate community in which they are located; they are serving the country generally, for their doors are open to all.'



KIMBERLEY  
PUBLIC  
LIBRARY  
23rd APRIL 1936

6. The Kimberley Public Library as it looked in 1936 when the SAMA Inaugural Meeting was held there.

Dr Leonard Gill then proposed that a South African Museums Association be formed. This was seconded by Dr George Arnold and unanimously carried. The draft constitution, as drawn up by the Secretary for the Interior, was then discussed, amended and adopted. For the position of first President of SAMA, Mr C. J. Swierstra was proposed by Professor Maingard and seconded by Dr van Hoepen. For the office of Secretary-Treasurer, Mr E. C. Chubb was proposed by Mr Swierstra and seconded by Dr Arnold, thus beginning 26 years of

service in this capacity. In response to the Chairman's invitation for nominations for four members of Council, the following were elected: Dr E. L. Gill, Dr J. Hewitt, Dr E. C. N. van Hoepen and Mr P. Thatcher. Captain Shortridge extended an invitation for the next annual general meeting to be held in King William's Town, and this was accepted. Thus began the sequence of annual conferences in different venues that has persisted unbroken for 50 years.

## PROPOSED MUSEUMS ASSOCIATION FOR SOUTH AFRICA.

INSTITUTIONS AND THEIR REPRESENTATIVES  
AT THE MEETING HELD IN KIMBERLEY  
ON THE 23RD AND 24TH OF APRIL, 1936.

Institutions.	Representatives.
Koornhaas Museum	J. C. Shortridge
Transvaal Museum	R. J. Swierstra
Rhodesian Museum	G. Arnold
East London Museum.	J. Courtenay-Latimer
Fort Elizabeth Museum	J. H. G. G. G.
Johannesburg, Fine Arts Assoc.	J. D. Louw
Cape Town University Museums.	C. J. Swierstra
Durban Museum and Art Gallery	E. C. Chubb
Albany Museum	A. Maingard
Witwatersrand University Museum	L. H. Maingard
African Museum, Johannesburg	The Michaelis Collection, Cape Town.
Rand's Museum	E. L. Gill
National Museum	A. C. Shortridge
Orange Free State Museum	Dr J. van Hoepen
Natal Museum	R. F. Lawrence
Univ. College, F.S.	J. H. G. G.
S. Afr. Museum, Capetown	E. C. Chubb
Albany Museum	John Hewitt
Mr. Bulman	W. G. G. G.
J. H. G. G.	E. L. Gill
Hampers Museum, Johannesburg.	(Rev.) A. G. G. G.

7. Signatures of the 21 institutional representatives who attended the inaugural meeting of SAMA on 23 April 1936.

# SAMA's 50 Years

## THE PRESIDENTS AND VICE-PRESIDENTS

During SAMA's 50 years of existence, its members have elected 30 Presidents, whose professional interests have ranged over the whole spectrum of museum work and even considerably beyond its boundaries. Among these Presidents have been art museum directors, zoologists, anthropologists, palaeontologists, a professor of French as well as one of music, botanists, a librarian and a military historian. Many of these people have achieved great eminence in their professional lives and have added stature and lustre to the Association that they served. The pages that follow contain biographical information on the Presidents in their order of election, together with similar particulars of Vice-Presidents who have not yet served as President.

### MR C. J. SWIERSTRA SAMA President for 1936-1937

Mr Swierstra is an important figure in any record of SAMA's affairs in that he convened the inaugural meeting and was elected the Association's first President in 1936. The actual events leading up to the first meetings, and Mr Swierstra's part in them, have already been discussed.

As was the case with his successor, Dr V. Fitz-Simons, Mr Swierstra spent his entire career at the Transvaal Museum. Born in Groningen, Holland, in 1873, he studied entomology at the University of

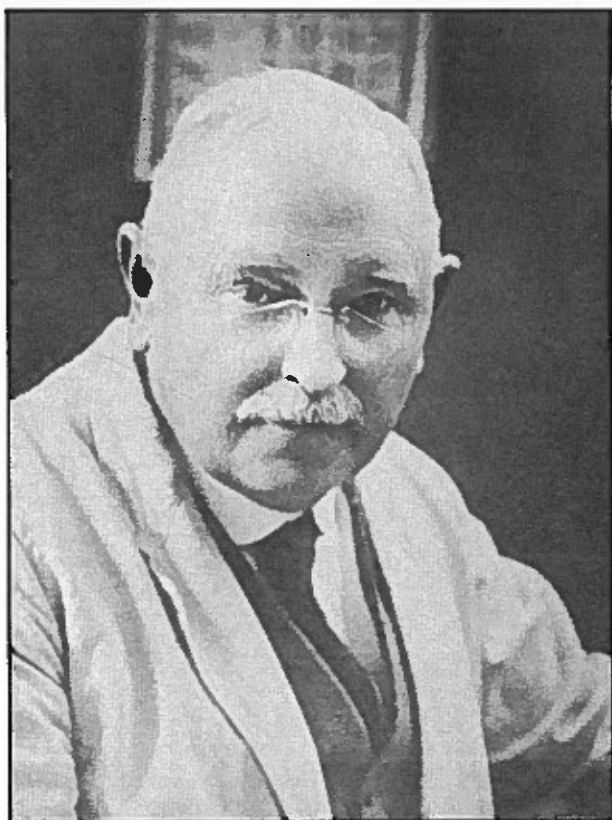
Amsterdam and was appointed at the Transvaal Museum as a technical officer in 1897. He progressed to the rank of Assistant Director in 1906 and was appointed Director in 1922, a post he held till his retirement in 1946.

Although an enthusiastic supporter of the Museums Association in its formative years, Mr Swierstra then turned his attention to other matters. He was elected a Fellow of the Royal Entomological Society in recognition of his work.

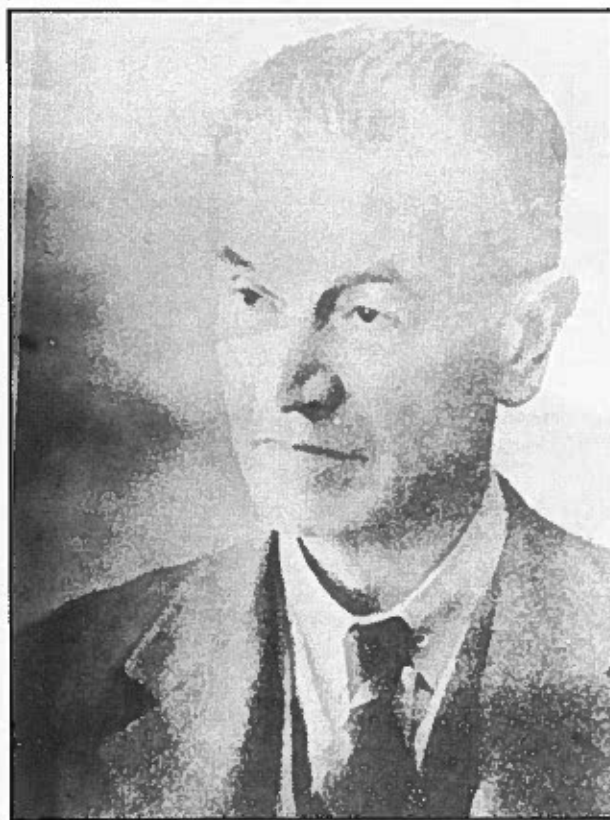
### DR E. L. GILL SAMA President for 1937-1938

*'Dr E. L. Gill proposed that a South African Museums Association be formed. This was seconded by Dr G. Arnold, and carried unanimously.'* So read the minutes<sup>11</sup> of the inaugural meeting of SAMA held at the Kimberley Public Library on 23 April 1936. An enthusiastic Founder Member, Dr Gill was SAMA's second President, following Mr C. J. Swierstra.

Born in Surrey in 1877, Dr Gill worked at the Royal Scottish Museum before coming to Cape Town as Director of the South African Museum in 1925, a position he held till his retirement in 1942. In 1936 he wrote:<sup>12</sup> *'Year after year, one of the commonest inquiries addressed to us at the South African Museum has been for an introductory work on the country's birds. Something in small compass, at small cost, and with abundant coloured figures seems always to be the desideratum.'*



8.  
Mr C. J. Swierstra



9.  
Dr E. L. Gill

*Few of the inquirers have any idea of the difficulty of meeting these demands in a land where the bird fauna is so large and the book-buying public so small. Still, the demand exists and grows; it deserves to be heard, and so far there has been nothing at all to satisfy it.* Dr Gill met this demand very adequately with his *A First Guide to South African Birds*<sup>12</sup> published in 1936. This was something of a family enterprise in that it was illustrated by his sister and financed by his brother. The book did a great deal to stimulate an interest in South African birds and to demonstrate the importance of museum collections in any serious study of natural things.

**PROFESSOR C. VAN RIET LOWE**  
SAMA President for 1938–1939

Born in 1894 at Aliwal North, Clarence (Peter) van Riet Lowe trained as a civil engineer at the University of Cape Town but early developed a passion for archaeology, linking the two activities in a most profitable manner. For instance, between 1923 and 1928 he was in charge of bridge construction in the Orange Free State and, in the course of supervising the construction of 89 bridges, he discovered and studied over 300 prehistoric sites. In 1935, when the government established a Bureau of Archaeology at the University of the Witwatersrand, he became its first Director, accepting the Chair of Archaeology offered to him.

Within the Bureau of Archaeology, which developed into the Archaeological Survey of South Africa, Professor van Riet Lowe built up an impressive

archaeological collection. Through his restless energy and activity he did a great deal to promote the discipline of archaeology in southern African museums. Furthermore, through his service as Secretary of the Commission for the Preservation of Natural and Historic Monuments (later to become the National Monuments Council) he proposed legislation that has given the South African prehistoric heritage the protection it so richly deserves.

**DR GEORGE ARNOLD**  
SAMA President for 1939–1940

A Founder Member of the Association, Dr Arnold served on the Council for three years in addition to his term as President.

Born in Hong Kong in 1881 and educated in England and France, Dr Arnold was appointed Curator of the then ten-year-old Rhodesian Museum in 1911, an organization which under his leadership grew into the National Museum of Rhodesia, and from which he retired as Director in 1947. He died in Bulawayo in 1962.

During his years in Rhodesia, Dr Arnold established himself as an international authority on the Hymenoptera—the Order of insects to which the ants, wasps and bees belong. He produced a number of widely acclaimed monographs on these insects and built up a very important research collection that is now in the South African Museum, Cape Town.

But quite apart from his attainments in science itself, Dr Arnold's contribution to the southern African



10.  
Professor C. van Riet Lowe



11.  
Dr G. Arnold

museum profession was considerable, in that he helped to establish the tradition of serious, world-class research in our natural history museums. Working in isolated circumstances, with very limited resources, he showed that the calibre of research done in a museum depends essentially on qualities of mind and character.

Dr Arnold was one of the unforgettable characters of the Museums Association's early days. In an obituary, Dr Elliott Pinhey<sup>13</sup> wrote:

*'Of small physical stature Arnold invariably made his presence felt. His alert brain was a formidable weapon in debate or argument, and his ready sense of humour earned him many an admirer even among those who had felt the biting lash of his criticism . . . Letters on official matters frequently contained some caustic comment directed at red tape or inefficiency . . . On any expedition, even into the roughest and wildest places, Arnold must have been almost unique for Africa in turning out immaculately dressed. This outfit would usually be a well-pressed tropical suit complete with waistcoat, tie, watch-chain and trilby. It did not matter what savage tribe or animals might be in the vicinity . . . Arnold had enjoyed a last brief expedition not long before his death. He had completed his last paper, and I was able to show him the proofs of this, which he signed on the night he died.'*

**DR E. C. VAN HOEPEN**  
SAMA President for 1940–1941

A Founder Member of the Association, Dr van Hoepen was elected SAMA President while he was Director of the National Museum in Bloemfontein, a



12.  
Dr E. C. N. van Hoepen

post he held from 1922 till 1950. He served on the SAMA Council for a further period of five years.

Born in Vlissingen, Holland, in 1884, Dr van Hoepen worked as a palaeontologist at the Transvaal Museum from 1910 till 1921, before moving to Bloemfontein. He published prolifically on palaeontological and ethnological topics, the title of his Presidential Address<sup>14</sup> being *The Bushman and his culture*.

Dr van Hoepen was an enthusiastic supporter of SAMA during its early formative years. His tireless research activity helped to maintain the tradition of serious research emanating from our natural history museums during the difficult years of the depression and second world war. He died in Edenvale in 1966.

**PROFESSOR L. F. MAINGARD**  
SAMA President for 1941–1942

Professor Maingard made an unusual contribution to the Association in that, apart from his term as President, he served as Honorary Auditor for 11 consecutive years from 1936 onwards. At this time he was Professor of French at the University of the Witwatersrand but had close links with the Africana Museum in Johannesburg, serving on its Advisory Committee. He also donated his extensive private library to this museum before his death in 1968.

An enthusiastic participant in the proceedings of SAMA's inaugural meeting in 1936, Professor Maingard proposed that an immediate start be made with an Association journal, and so it was within a few months that *SAMAB* was launched.

Professor Maingard's Presidential Address<sup>15</sup> provided a detailed description of the Museu Alvaro de



13.  
Professor and Mrs L. F. Maingard

Castro in Lourenco Marques as it was in 1942 when he visited it as an official representative of the Historical Monuments Commission. Such visits were of great value in promoting the interests of the Museums Association in the adjacent countries of southern Africa.

**PROFESSOR P. R. KIRBY**  
SAMA President for 1942–1943, 1949–1950, 1952–1953, 1957–1958 & 1963–1964

Professor Kirby was unique among SAMA Presidents in that he was elected to the office on no fewer than five separate occasions, in addition to his 21 years service on the SAMA Council. Born in Aberdeen, Scotland, in 1888, he held the position of Professor of Music at the University of the Witwatersrand for 30 years from 1922 onwards. Apart from his musical activities, he wrote on a variety of subjects including such diverse topics as the wreck of the Grosvenor, Dr Andrew Smith, the Hottentot Venus and Dr James Barry. His five Presidential Addresses had a strong musical aspect to them, their titles being:

1943: *South African native drums, particularly the great ngoma of the Venda.*<sup>16</sup>

1950: *Musical archives.*<sup>17</sup>

1953: *Science, art and the nation.*<sup>18</sup>

1958: *Military music through the ages.*<sup>19</sup>

1964: *The migration of races as demonstrated by their musical spoor.*<sup>20</sup>

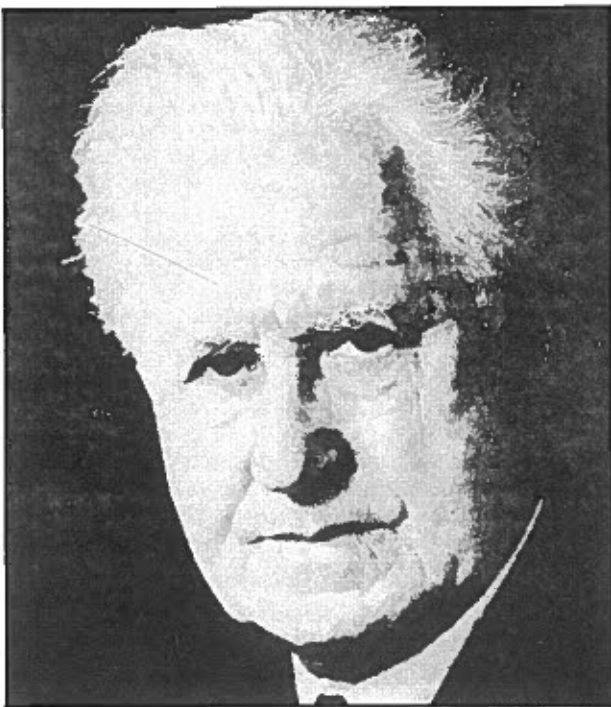
Apart from his considerable direct service to the Museums Association, Professor Kirby's contribution to the museum profession was twofold: he forcefully drew attention to the fact that musicology was a valid and appropriate component of museum work and, secondly, he emphasized the advantages of close

links between universities and museums, in this way strengthening the educational component of our museums.

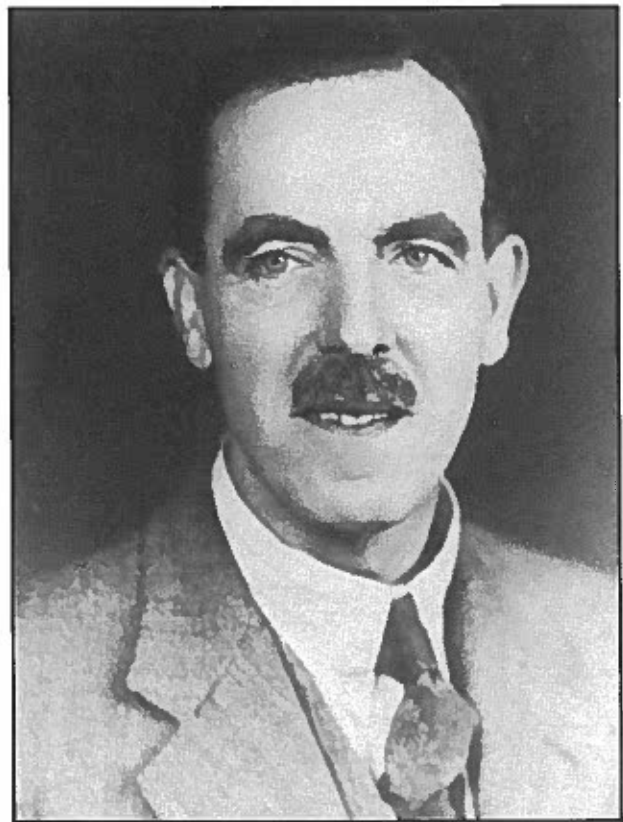
**MR E. C. CHUBB**  
SAMA President for 1943–1944

It is probably true to say that had it not been for Mr Chubb's enthusiasm and vigour during SAMA's early, formative years, the Association would not have been viable at all. In March 1936 when he was approached by Mr C. J. Swierstra to enquire whether he would be interested in attending an inaugural meeting of a proposed Museums Association he replied at once:<sup>21</sup> *'It is a subject in which I take a keen interest, and I should like to be given an opportunity of addressing the Meeting on "The advantages of forming an organisation such as that proposed". I trust there will be a representative attendance.'* The address, subsequently published in *SAMAB*,<sup>10</sup> helped to make support for the embryonic Association unanimous and thus began Mr Chubb's 26-year term of service as the SAMA Secretary/Treasurer. In addition to this, however, he shouldered the Editorship of the new Journal *SAMAB* from 1936 until 1962.

Born in London in 1884, Mr Chubb started his museum career as an ornithologist at the British Museum. Then, in 1910 he was appointed Director of the Durban Municipal Museum, a position he held till his retirement in 1951. Under his guidance the Durban Museum and Art Gallery, as it became known in 1919, developed into a fine institution with excellent exhibition galleries. But Mr Chubb's greatest contribution to the profession flowed through his Museums Association work. In his



14.  
Professor P. R. Kirby



15.  
Mr E. C. Chubb

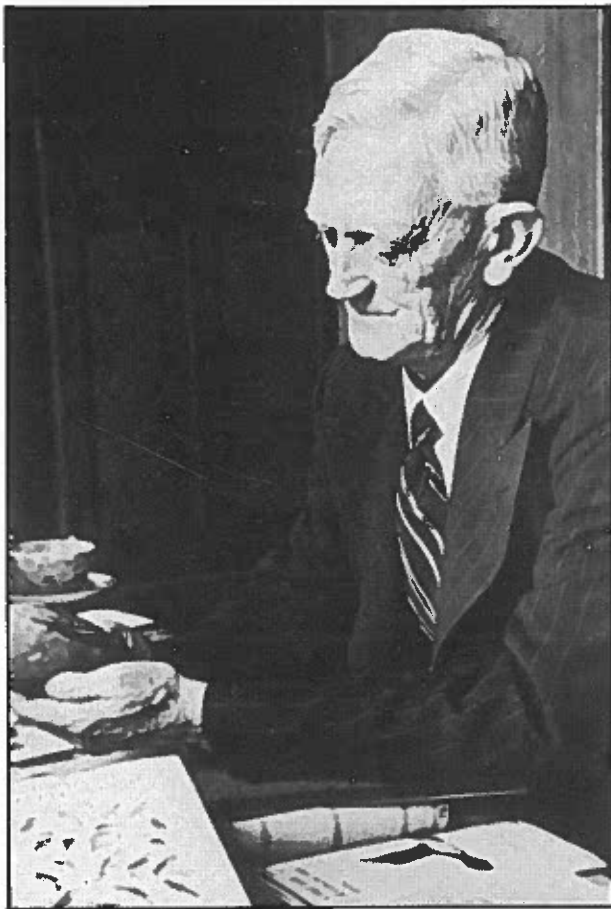
Presidential Address<sup>22</sup> of 1944 he took the opportunity of reviewing the first eight years of SAMA's existence, writing:

*'By its two principal activities, the holding of annual meetings and publication of our quarterly bulletin, the Association has served many useful purposes. It has bridged the distance that separates us; and promoted a spirit of co-operation, a readiness to assist each other, both institutionally and individually. Opportunities have been afforded us of discussing our problems with our fellow-members and of having the benefit of their collective opinion in solving them; opportunities have also been provided for bringing forward proposals for the benefit of our institutions generally. In short, the Association has enabled us to pool our knowledge, our experience, and our aspirations for the benefit of all our institutions.'*

It was through Mr Chubb's energetic intervention that this favourable state of affairs came to be.

#### DR AUSTIN ROBERTS SAMA President for 1944–1945

One of the pioneers in the systematic study of southern African birds and mammals, Dr Austin Roberts was born in Pretoria in 1883 and joined the staff of the Transvaal Museum in 1910, where he remained until his death in 1948. During this time he built up extremely important research collections of birds and mammals, running to 47 000 specimens, on which he based his many publications and his two standard handbooks, *The Birds of South Africa*<sup>23</sup> and *The Mammals of South Africa*.<sup>24</sup>



16.  
Dr Austin Roberts

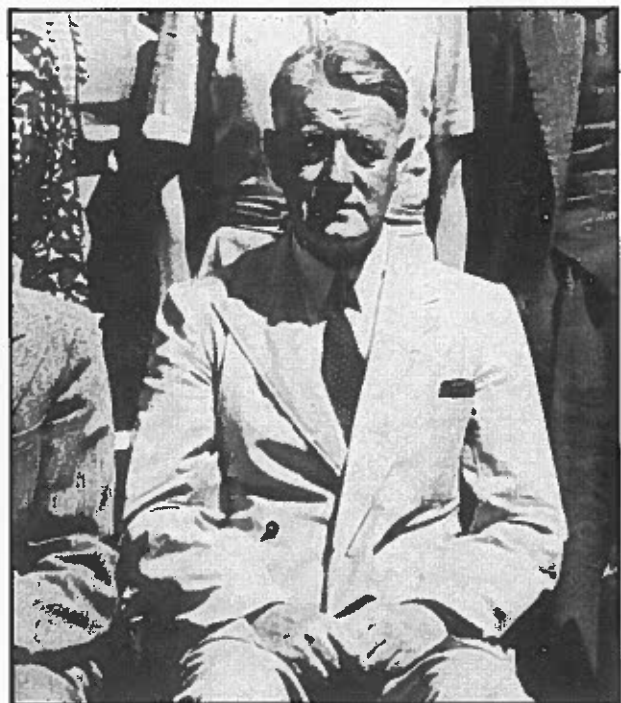
Dr Roberts' main contribution to the southern African museum profession lay in the fact that, despite his lack of formal training, he helped to develop and maintain the tradition of serious zoological research at natural history museums. His studies laid the foundation for a great deal of subsequent work and his 1945 Presidential Address<sup>25</sup> was appropriately entitled *Museums and biological research*.

#### PROFESSOR R. H. COMPTON SAMA President for 1945–1946 & 1948–1949

Professor Compton was not only SAMA President on two separate occasions, but he served on the Council for an additional nine years. Born in England in 1886, he was appointed in 1919 to the dual position of Director of the National Botanic Gardens in Kirstenbosch and Harold Pearson Professor of Botany at the University of Cape Town. During his long and distinguished career, he described over 200 new species of plants, including seven new genera, and had 20 plants named after him. He also built up the Bolus Herbarium to a collection of international repute. He died in 1979.

It could be said that Dr Compton's greatest contribution to the southern African museum profession lay in the fact that he brought the National Botanic Gardens, as living museums, within the orbit of the Association. This tradition was continued by his successors, notably Professor Brian Rycroft, and contributed a most valuable additional dimension to the scope of the Museums Association.

Professor Compton's two Presidential Addresses<sup>26, 27</sup> dealt with *Preservation, conservation and education*, and *The pleasures and pains of systematics*. They conveyed a botanical viewpoint to the natural history museum scene which is normally strongly dominated by zoology.



17.  
Professor R. H. Compton

**PROFESSOR C. J. VAN DER HORST**  
SAMA President for 1946–1947

Born in Holland in 1889, Professor van der Horst was head of the Witwatersrand University's Department of Zoology from 1932 until his death in 1951. His early work was on the brain in fishes but he subsequently turned his attention to marine invertebrates, before doing some very significant research on mammalian embryology, concentrating particularly on elephant shrews and golden moles. Realizing the difficulty of teaching students about marine animals when they had no access to the sea, Professor van der Horst was instrumental in the establishment of the marine research station on Inhaca Island, near Maputo, a place to which groups of zoology students have gone for many years.



18.  
Professor C. J. van der Horst

The fact that Professor van der Horst served as SAMA President in 1946 emphasized the close links which exist naturally between university zoology departments and natural history museums. In fact, his Presidential Address<sup>28</sup> on *The limitations of classification* would have been of equal interest and relevant to university-based biologists as to their museum colleagues. In thus pointing out how essential a role natural history museums have to play in the teaching and practice of biology, Professor van der Horst did the southern African museum profession a great service.

As is often the case with people who devote their lives to the study and appreciation of natural things,

Professor van der Horst is remembered as 'one of the kindest and most generous of men'<sup>29</sup> while at the same time having been 'as good a professor of zoology as you'll find anywhere in the world'.<sup>30</sup>

**MR R. F. KENNEDY**  
SAMA President for 1947–1948

At the time of his SAMA presidency, Mr Kennedy held a dual position—that of City Librarian of Johannesburg and Director of the Africana Museum there. Born in England in 1897, Mr Kennedy joined the Johannesburg Public Library in 1921 and added the Africana Museum directorship to his responsibilities in 1938. Thus began an intense interest in Africana collections which prompted Anna H. Smith<sup>31</sup> to write 'Mr Kennedy contributed much to our knowledge of various kinds of Africana, not only writing and lecturing on many aspects of the subject, but by helping to build up the Africana Museum into an institution noted throughout the world for its fine and meaningful collection of Africana of all kinds relating to Southern Africa'.



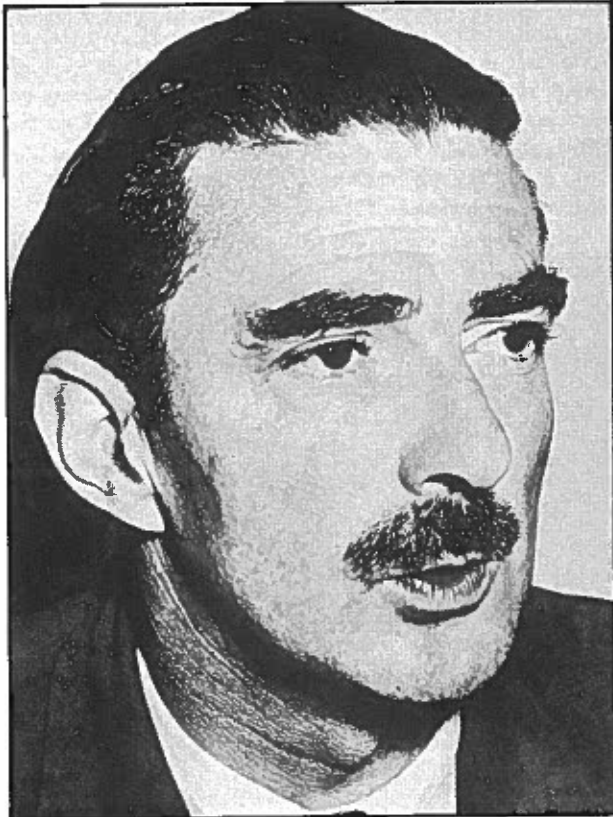
19.  
Mr R. F. Kennedy

Mr Kennedy's Presidential Address<sup>32</sup> was entitled *Utopia round the corner* and gave an imaginative viewpoint on how the southern African museums might well develop in the decade following 1948, as the country emerged from the doldrum years of the war. One of Mr Kennedy's contributions to the museum profession was that he was able to demonstrate the advantages of close links between the museums and their sister organizations, the libraries.

**MR J. PARIS**  
SAMA President for 1950–1951

Director of the South African National Gallery from 1949 till 1962 when he left the country, Mr Paris was born in Sussex in 1912 and educated at Oxford. In his Presidential Address<sup>33</sup> he expressed

some thought-provoking ideas on the all-pervading attitude towards art: *'It is a pathetic fallacy that everyone can or could or should know about painting . . . the courage of multitudes of self-appointed critics and connoisseurs is hardly less than absolute, when, with no qualms at all and little effort, with obscure words like "beauty" and "truth" to "nature" and "spiritual values", they pronounce upon the life work of artists who, by nature of their trade and training, may have given much time and thought and trouble to the painting of pictures in a particular way. I am in mind, of course, of Adreè Lhote's distinction between those who paint to make pictures and the more honourable who make pictures in order to learn how to paint.*



20.  
Mr J. Paris

*If only pictures could bite their critics, the critics might then advance with more caution, at least with the cunning of hunters, finding before them no less beautiful forms of life and marvellous, than do explorers pushing out into strange and unknown places, where the names and habits of the game are legendary but as yet unknown to them personally . . . Few explorers would set out on a life-long safari to the interior of the land of being, without first equipping themselves by the study of charts and maps and written accounts of every kind, probable or improbable . . . There are places where all such knowledge available to man may be had . . . the art museum for the explorer among pictures and objects of art, the visible tangible songs of the spirit of man, alone, and responsible among his fellows.'*

**DR R. H. N. SMITHERS**  
SAMA President for 1951–1952 & 1962–1963

A member of SAMA since the year of its inception, Dr Smithers has served on the Council for 13 years in addition to his two terms as President. Born in

Cape Town in 1907, Dr Smithers worked as a Technical Officer at the South African Museum between 1933 and 1939. After the war, in 1947, he was appointed Director of the National Museums in Zimbabwe, a post he held with considerable distinction, till his retirement in 1976. He subsequently moved to the Mammal Research Institute of Pretoria University where he wrote a major book *The Mammals of the Southern African Subregion*. He is currently working as Associate Curator of Mammals at the Transvaal Museum.

Dr Smithers has written extensively on birds and mammals, following, in a sense, the tradition of Aus-



21.  
Dr R. H. N. Smithers

tin Roberts. Under his guidance, and as a result of his initiative, modern buildings were provided for the three major museums in Zimbabwe, bringing them up to an extremely high standard. Dr Smithers' contributions to the museum profession have, therefore, been considerable, as is the case with his support of SAMA itself. In recognition of these services he was elected an Honorary Fellow of the South African Museums Association in 1985. His two Presidential Addresses dealt with *Museums and public relations*<sup>34</sup> and *Planning for the future*.<sup>35</sup>

**DR J. F. PRINGLE**  
SAMA President for 1953–1954

Born at Warrenton, near Kimberley, in 1910, Dr Pringle had a long and productive career in museums, both as Director of the Port Elizabeth Museum and Snake Park from 1937 to 1952 and Director of the Natal Museum for 22 years before his retirement in 1975. Under his guidance and influence

the Natal Museum grew very considerably, its staff increasing from 10 to 31, its subsidy increasing more than tenfold in value and a fine new building becoming available to it. Now in retirement, Dr Pringle still serves on the Natal Museum Council.

Dr Pringle's contributions to the Museums Association were no less significant. Apart from his term as President, he served on Council for 16 years and, as early as 1955, was influential in the establishment of the Education Committee, fostering contact with the British Museums Association for the provision of a Museums Diploma for South African museum professionals. He served as Chairman of the Education Committee from 1965-1971, was active in encouraging the development of the Technical Section within the Association, while it was at his initiative that the first meeting of Educational Officers was held in 1972. In keeping with his museological preoccupation, the title of his Presidential Address<sup>36</sup> was *The Director, his duties, responsibilities and obligations*.

In recognition of his services to the southern African museums profession, Dr Pringle was elected an Honorary Life Member of SAMA in 1970 and was admitted to Honorary Fellowship in 1985.



22.  
Dr J. F. Pringle

**PROFESSOR J. D. CLARK**  
SAMA President for 1954-1955

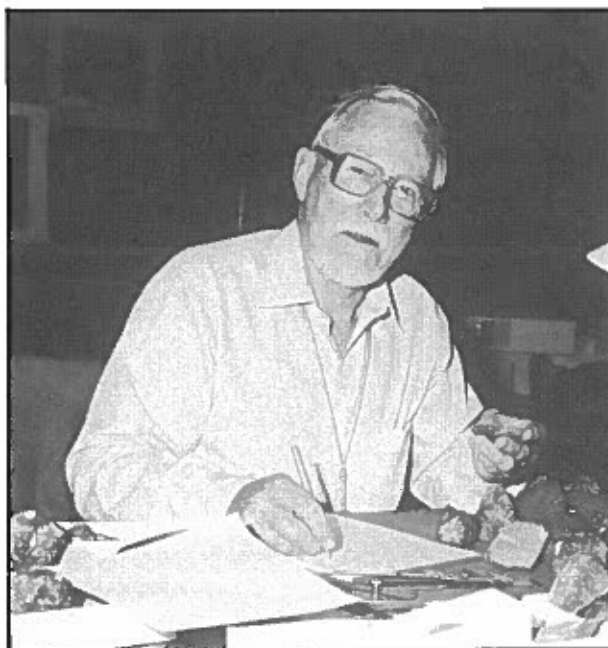
*'Desmond Clark is truly a citizen of Africa, for no one has wrested from this continent's soil more evidence on its prehistoric archaeology than he has done. It is no exaggeration to accord him the status of the greatest living authority on the prehistoric archaeology of Africa':* thus read the citation on the award of an Honorary Doctor of Science

degree to Professor Clark by the University of the Witwatersrand in January 1985.

Born in London in 1916, Desmond Clark trained in archaeology at Cambridge before coming out to Africa in 1937 as Curator and then Director of the Rhodes-Livingstone Museum in Zambia, a post he held for 25 years. During this time he built up the museum as an internationally recognized institution for the study of man in Africa, while the annual winter schools he organized drew participants from many parts of the continent.

In 1961 Desmond Clark moved to the University of California in Berkeley as Professor of Anthropology and Curator of Palaeolithic Archaeology in the Lowie Museum of Anthropology there. This new appointment has given Professor Clark the opportunity of continuing his archaeological fieldwork throughout Africa with excellent results.

Professor Clark remains one of SAMA's most distinguished overseas members.



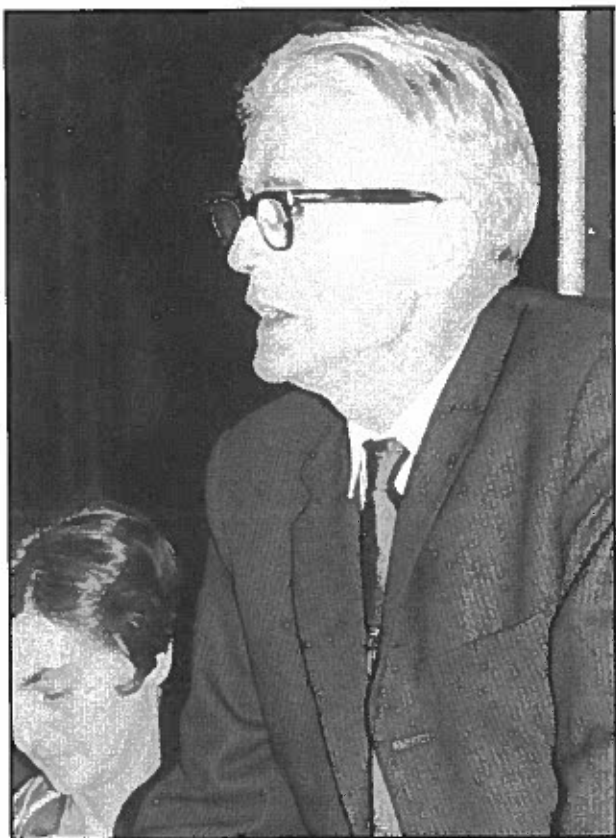
23.  
Professor J. D. Clark

**DR V. F. M. FITZSIMONS**  
SAMA President for 1955-1956

*'No one has more closely approximated to the ideal Museum Director or complied more fully with the impossible demands made on the head of a Museum in South Africa' than Vivian FitzSimons, was the view expressed by Dr R. F. Lawrence,<sup>37</sup> himself a Founder Member of the Association. And it would certainly be true to say that museums were Dr FitzSimons' life. Born at Pietermaritzburg in 1901 and son of the well-known Dr F. W. FitzSimons, founder of the Port Elizabeth Snake Park, Vivian FitzSimons joined the staff of the Transvaal Museum in 1924 and remained there for the rest of his working life, serving as Director for 20 years, prior to his retirement in 1966. During this time he established himself as an international authority on reptiles and his major work<sup>38</sup> *The Snakes of Southern Africa* is still a standard text. He, in*

collaboration with Dr Charles Koch, established the Namib Desert Research Station in 1962, which has since developed into a major institute of international significance.

Within the Museums Association, he served the Council for 15 years in addition to his term as President. In recognition, he was made an Honorary Life Member of SAMA and, on his death in 1975, he bequeathed a sum of money to the Association, which has been used to finance the FitzSimons Award, given annually to the delegate who presents the best paper at a SAMA conference.



24.  
Dr V. F. M. FitzSimons

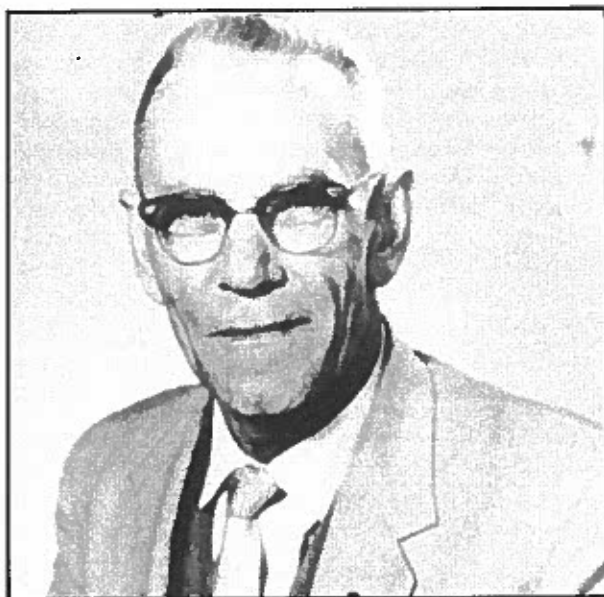
**DR A. C. HOFFMAN**  
SAMA President for 1956–1957

As a Founder Member of SAMA, Dr Hoffman attended the inaugural meeting in Kimberley in 1936, twenty years before his election as SAMA President.

Born in Wolmaransstad in 1903, Dr Hoffman's museum career started in 1934 with his appointment to the National Museum, Bloemfontein, as a Professional Officer doing research on frogs. He succeeded Dr E. C. van Hoepen as Director of the National Museum in 1951, a post he held until his death in 1969. He published extensively on a variety of topics, initially mainly zoological but later tending more towards anthropology and palaeontology. His Presidential Address<sup>39</sup> was on *The influence of pictures on Mankind*.

Apart from Dr Hoffman's direct contributions to the work of SAMA, he exerted an important influence on the development of the museum profession in the country in that he built up one of the state-aided

institutions from very small beginnings to impressive proportions. The National Museum in Bloemfontein has since taken its rightful place among the major museums in South Africa in display, research and education.



25.  
Dr A. C. Hoffman

**DR A. J. D. MEIRING**  
SAMA President for 1958–1959

At the time of his SAMA Presidency, Dr Meiring was Director of the State Museum in Windhoek, a position he held from 1957 till 1960 before becoming Professor of Zoology at Fort Hare University. Born in Edenburg, Orange Free State, in 1899, he was the first person to be awarded a doctorate in Zoology by the University of the Orange Free State. He subsequently worked for seven years as a professional officer at the National Museum, Bloemfontein.

Dr Meiring's Presidential Address<sup>40</sup> dealt with *Museums in South West Africa*.



26.  
Dr A. J. D. Meiring

**DR R. C. BIGALKE**  
**SAMA President for 1959–1960**

Born in 1896, Dr Bigalke obtained his doctorate in Berlin in 1926, the year before he was appointed Director of the National Zoological Gardens in Pretoria, a position he held with distinction for 35 years.

For the topic of his Presidential Address,<sup>41</sup> Dr Bigalke chose *Museums and publicity*, pointing out the benefits that can accrue to an institution from the effective publicizing of its activities. He pointed out that, as far as the National Zoological Gardens were concerned, he had maintained a press service since 1927 and had been able to collect 5000 press cuttings on the zoo's activities in the intervening years.



27.  
Dr R. C. Bigalke

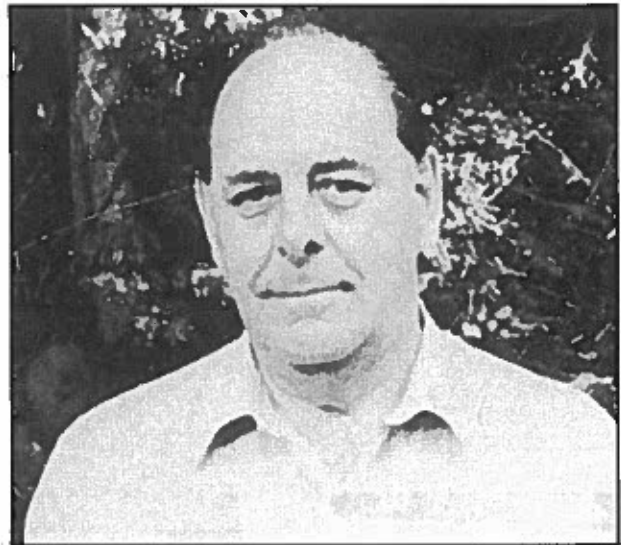
One of Dr Bigalke's main contributions to the profession has been that he brought the National Zoological Gardens within SAMA's orbit, emphasizing the fact that zoological gardens may correctly be seen as living museums.

**DR P. A. CLANCEY**  
**SAMA President for 1960–1961**

One of South Africa's leading ornithologists, Phillip A. Clancey was born in Glasgow in 1917, coming to Pietermaritzburg in 1950 to take up a post at the Natal Museum. He was appointed Director of the Durban Museum and Art Gallery in 1952, retiring from the position 30 years later. He has written extensively on southern African birds and, in recognition, has received many honours, including Honorary Life Membership of the Southern African Ornithological Society and Corresponding Fellowship of the American Ornithologists' Union, while he received the degree of Doctor of Science, *honoris causa*, from Natal University in 1981. His most

recent book<sup>42</sup> *The Rare Birds of Southern Africa* is illustrated with his own striking paintings. In recognition of his museological achievements, he was elected a Fellow of the Museums Association, London, in 1959.

In his Presidential Address<sup>43</sup> to SAMA entitled *The first twenty-five years – and the future* he made some significant comments on the Association's professional qualifications: '*and it seems to me that this body should take stock of the situation and take upon itself the authority of a fully professional body, and adjust its constitution accordingly. Now that the Association has finally decided on Diploma and Technical Certificate schemes, closely analogous to those operated by the British Museums Association, a great and highly significant step forward has been taken. This Association must see that its Diploma becomes the standard professional qualification, the possession of which signifies that a person is equipped by both training and experience to administer and care for a museum, while the possession of the technical certificate connotes a high standard of proficiency in some branch of the technical side of museum work. The next major step that this body must take in the light of its new responsibilities is to get some reasonable and fair measure of recognition by governmental, provincial and other ruling bodies for its two professional qualifications.*'



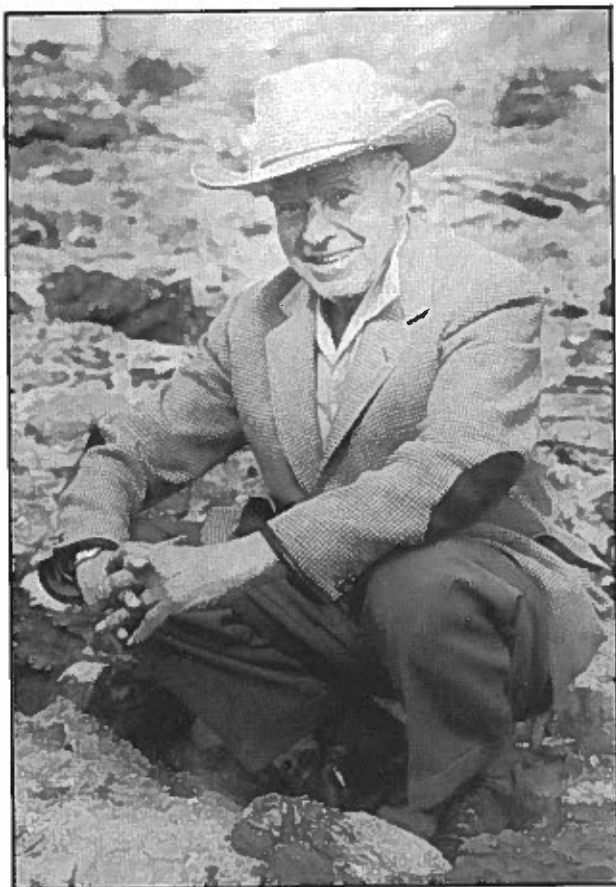
28.  
Dr P. A. Clancey

**PROFESSOR R. A. DART**  
**SAMA President for 1961–1962**

*'In retrospect, Dart's great contribution was that . . . he forced the world of palaeo-anthropology to appreciate that there had indeed been, at one time, small-brained but upright walking members of the family of man.'*<sup>44</sup> With these words Professor P. V. Tobias summed up Professor Dart's contribution which flowed from his interpretation and description of the Taung child in 1925, the first fossil of a southern ape, or australopithecine, that the world had known.

Born in Toowong, Queensland, in 1893, he qualified in medicine at the University of Sydney before doing postgraduate work in London. In 1923 he came to South Africa as Professor of Anatomy at the University of the Witwatersrand, a position he held with great distinction till his retirement in 1958.

In his SAMA Presidential Address<sup>45</sup> of 1962 he wrote: 'When I arrived in Johannesburg in 1923 I knew I could not teach Anatomy without building up a museum. So I set about it immediately and have been concerned with its offspring and by-products ever since.' In fact, one of Professor Dart's contributions to the museum profession in southern Africa was that he impressed on the endless stream of students passing through his Department the importance and relevance of museums in teaching and research. Furthermore, through his own widely-acclaimed greatness he has brought lustre to the Southern African museum profession and the Association.



29.  
Professor R. A. Dart

**DR A. W. CROMPTON**  
SAMA President for part of 1964

Dr Crompton was able to serve as President for only five months in 1964 before taking up an appointment as Director of the Peabody Museum at Yale University. At the time of his election he was Director of the South African Museum in Cape Town, a post he held for eight years.

Born in Durban in 1927, Dr Crompton worked briefly as a palaeontologist at the National Museum in Bloemfontein after obtaining his doctorate at Cambridge. While there, and also at the South African Museum and in the United States, Dr Crompton established himself as a palaeontologist of international standing, through his research on the origin of mammals. It was certainly the Association's loss when he left South Africa so early in his career.



30.  
Dr A. W. Crompton

**DR T. H. BARRY**  
SAMA President for 1964-1966 & 1973-1975

In recent years no one has done more for the promotion of museums and the museum profession in southern Africa than Dr Thomas Henry Barry. Born in Mossel Bay in 1924, he obtained his doctorate in zoology at the University of Stellenbosch and chose the fossil mammal-like reptiles of the Karoo as his field of research. Some of his work on the earliest representatives of this group remains very significant.

Dr Barry joined the museum profession in 1959 when he was appointed Director of the Albany Museum in Grahamstown, remaining there till 1964, when he moved to the directorship of the South African Museum in Cape Town, a post he held till his death in 1984. As a result of his tireless efforts, a magnificent new addition to the South African Museum is currently being built about which Dr M. A. Cluver,<sup>46</sup> Dr Barry's successor at the South African Museum, had this to say: '*Langer as tien jaar het hy aan die hoof van die navorsing, die beplanning en die motivering van hierdie kompleks gestaan, en alhoewel dit nie vir hom beskore was om die finale produk te sien nie, is sy idees, sy ideale en ook sy museumfilosofie in elke beton-balk en baksteen van hierdie nuwe Museum ingebou. Dit is dus baie paslik dat die Raad van die Museum in November 1984 besluit het om die pragtige nuwe ouditorium wat nog in aanbou is, na Dr Tom Barry, wat soveel aan sy Museum gegee het, te vernoem.*'

But in the same way that Dr Barry's energy flowed to the benefit of the South African Museum, so did it to the museum profession in general and the Southern African Museums Association in particular. In addition to his five years as SAMA President, he served on the Council for 13 years and was invariably active in committee work throughout the year. He was a prime mover in the Museum Accreditation scheme as well as in the Standing Committee on Ethics and served for many years on the Research

Grant Screening Committee. In fact, there was hardly an aspect of museum work or administration with which Dr Barry did not involve himself to the benefit of the profession as a whole. The subjects of his five Presidential Addresses,<sup>47-51</sup> ranging from palaeontology to the brain-drain and its effects on South African museums, bear witness to this breadth of involvement.

Despite his early, untimely death while in the midst of his active career, Dr Barry was fortunately already receiving recognition for his professional contributions. He was awarded two Honorary Professorships—in palaeontology at the University of Cape Town and in museology at the University of Stellenbosch. The esteem in which his immediate colleagues held him is evidenced by the fact that he was elected Chairman of the Committee of Heads of Cultural Organizations on no fewer than three occasions.

A last impression from Dr Cluver:<sup>46</sup> *'Tom Barry was what I like to think of as a "people's person", someone who got on well with others, and could easily motivate and inspire people and then work with them - these were the qualities which made him so sought after as someone who got things done.'*



31.  
Dr T. H. Barry

**COLONEL G. R. DUXBURY**  
SAMA President for 1966-1968, 1975-1977 & 1983-1985

Having served for 15 years on the SAMA Council in addition to his three two-year terms as President, there is no one more familiar with the workings of the Association than Colonel George Duxbury. Born in Johannesburg in 1917, he qualified in mining engineering but had his mining career interrupted by the second world war in which he served with the artillery in North Africa and Italy. He was appointed Director of the South African National Museum for Military History in 1951, a position he has held with great distinction until the present day.

During the last 30 years, Col. Duxbury has been exceptionally active both in the military and museum spheres. He has served as Commanding Officer of the Westpark Commando and 18th Brigade, being



32.  
Col. G. R. Duxbury

awarded the Order of the Star of South Africa for exceptionally meritorious service of military importance. Among many other distinctions, he was made an Honorary Life Member of the South African Military History Society. He has made specialized studies of the military history of the Anglo-Boer War and has studied all the major battlefields of this and of the 1880-1881 War of Independence. In fact, two of the most memorable Presidential Addresses ever given to the Association were those that Col. Duxbury delivered in 1968 and 1969 on the battles of Majuba<sup>52</sup> and Magersfontein<sup>53</sup> respectively, in which he not only traced the sequence of events in detail from his own experience of the localities, but also demonstrated the rifles used by the opposing forces, firing them off to the delight and consternation of the audience.

Col. Duxbury remains one of the most active and respected members of the Association, bringing an air of moderation and military dignity to every occasion for which he is much sought after and appreciated.

**DR C. K. BRAIN**  
SAMA President for 1968-1970 & 1985-1986

The current SAMA President, Bob Brain has served the Association as Councillor, Editor and Convenor of the Research Committee. Born in Salisbury (Harare) in 1931, he trained in zoology and geology at the University of Cape Town and holds doctorates from there and the University of the Witwatersrand. His museum career started at the Transvaal Museum in palaeontology during 1954 and he subsequently worked for four years on reptiles with Dr V. FitzSimons before moving to the Queen Victoria Museum, Salisbury, as Keeper of Zoology for the period 1961-1965. Returning to the Transvaal Museum as palaeontologist, he was appointed Director there in 1968, a position he still holds. He has worked on a wide variety of natural history topics, ranging from protozoans to primates, but is best

known for his 20-year-long excavation of the Swartkrans early hominid cave now nearing completion, his interpretation of early hominid fossil assemblages<sup>54</sup> and his part in the establishment of the new discipline of taphonomy.

In a recent autobiographical essay<sup>55</sup> Bob Brain pointed out that, while being deeply involved in the work of a natural history museum, he is first and foremost a naturalist—someone whose initial response to the natural world is an emotional one. In this regard, a quotation from the writings of the British philosopher Bertrand Russell is appropriate:

*'Science in its beginnings was due to men who were in love with the world. They perceived the beauty of the stars and the sea, of the winds and the mountains. Because they loved them their thoughts dwelt upon them, and they wished to understand them more intimately than a mere outward contemplation made possible. "The world" said Heraclitus, "is an ever living fire, in measures kindling and in measures going out". Heraclitus and the other Ionian philosophers, from whom came the first impulse to scientific knowledge, felt the strange beauty of the world almost like a madness in the blood. They were men of titanic passionate intellect, and from the intensity of their intellectual passion the whole movement of the modern world has sprung.*

*But step by step as science has developed, the impulse of love which gave its birth has been increasingly thwarted, while the impulse of power which was at first a mere camp follower, has gradually usurped command in virtue of its unforeseen success. the lover of nature has been baffled, the tyrant over nature has been rewarded.'*

In a world where the headlong pursuit of science by the 'tyrants over nature' is so very evident, the natural history museums remain as havens, where original values are retained, and where people may spend their entire lives working on the things they love, in their true vocations. For this reason natural history museums will remain places of immense value in any civilized community—places where the things of the mind mingle harmoniously with those of the spirit.



33.  
Dr C. K. Brain

#### DR M. E. D. COURTENAY-LATIMER SAMA Vice-President for 1968–1973

The name of Marjorie Courtenay-Latimer will be linked for ever to *Latimeria chalumna*, the first living coelacanth known to science, a remarkable fish thought to be long extinct, which she recognized as something unusual in 1938.

Born in East London in 1907, Marge Courtenay-Latimer developed an active interest in natural history early in her life and was appointed Curator of the East London Museum in 1931, a post she held till her retirement in 1972. Under her enthusiastic guidance the Museum grew into an impressive organization, moving into a new building which she and her Board Chairman, Mr G. G. Smith, planned and equipped.

Dr Latimer is a Founder Member of SAMA, having participated in the inaugural meeting of 1936. She subsequently served on the SAMA Council for 16 years. As Director of the East London Museum she lent unstinting help to other museums in the eastern Cape and actively promoted the cause of museology in southern Africa. After her retirement she worked for varying periods at the newer Cape museums, at the request of the Cape Provincial Museum Service. In 1957 she received the Cape Tercentenary Foundation's Award for outstanding work over and above her official duties. In 1971, Rhodes University conferred an Honorary Doctorate on her in recognition of her services to museology and science, while she was elected to Honorary Fellowship of the Southern African Museums Association in 1985.



34.  
Dr M. E. D. Courtenay-Latimer

**PROFESSOR M. BOKHORST**  
**SAMA President for 1971–1973**

It would be difficult to add anything to the eloquent obituary<sup>36</sup> written by Professor Bokhorst's successor as Director of the South African National Gallery, Dr R. H. van Niekerk in 1982:

*'Matthys was a gentle and amiable colleague and his modesty may have encouraged some of us to forget his very distinguished career and long record of accomplishments.*

*Matthys Bokhorst was born in Rotterdam in 1900. He studied in Leyden under the eminent historian Johan Huizinga who supervised his work for his D.Lit et Phil. In 1929 the Netherlands Government appointed him as professor of Netherlands Cultural History at the then Transvaal University College in Pretoria. It was in Pretoria that he founded in 1930 the Nederlandse Kultuurhistoriese Instituut. He was also immediately active in the campaign to establish the University of Pretoria as an Afrikaans university.*

*During his years in Pretoria he was constantly concerned to encourage many kinds of cultural activities into which the broad public was drawn. His special concern was to promote appreciation and knowledge of the visual arts by means of regular art exhibitions. He was in no small way responsible for the wider appreciation of the work of his contemporaries such as Hendrik Pierneef, Maggie Laubser, Irma Stern, Alexis Preller and Moses Kottler.*

*In 1939 he was the co-founder and co-editor of the important periodical Historiese Studies. The eruption of World War II and the German invasion of the Netherlands moved Prof. Bokhorst to take leave of absence and to join the Netherlands forces abroad. He had achieved the rank of Lieutenant-Colonel by the time he participated in the liberation of Holland. In these years, too, he served as a member of the founding committee of UNESCO and of the Inter-Allied Commission for the Protection and Recuperation of Art Treasures and Monuments.*

*By 1946 he was back in South Africa and resumed his duties at the University of Pretoria.*

*For his many Dutch countrymen who had immigrated to this country (Prof. Bokhorst had become a naturalized South African citizen in 1937) the Nederlandse Post had early become an important local mouthpiece. In 1947 he became Editor-in-Chief of this journal and held that office until his eightieth year.*



35.  
Professor M. Bokhorst

*In 1951 Prof. Bokhorst moved to Cape Town where he was soon actively involved in the arts. He became National President of the SA Association of Arts and wrote art criticism for Cape Town newspapers for many years. In 1956 he became Director of the Michaelis Collection and in 1962 was appointed Director of the SA National Gallery. From 1973 for several years he stood in as acting Professor of Netherlands Cultural History at the University of Cape Town.*

*From the moment of his arrival in Cape Town until the end of his life, Prof. Bokhorst was tirelessly involved in the promotion of the arts and served on an astonishing number of committees and contributed his services to numerous organizations. He was also a prolific contributor to learned journals and encyclopaedias, for many of which he provided the entries on South African art and artists.*

*Many honours came the way of Matthys Bokhorst in acknowledgement of his work in the cultural field.*

*In 1967 he received the Van Riebeeck Medal from the Nederlands Zuid-Afrikaanse Society. In 1970 he was awarded the Extraordinary Medal of Honour of the SA Akademie vir Wetenskap and in 1973 he was made an officer of the Order of Orange Nassau by the Queen of the Netherlands. In the year of his 80th birthday, the Trustees of the SA National Gallery made him an Honorary Fellow of that institution and awarded him the Medallion of Fellowship.*

*Prof Bokhorst's active interest in the work of his colleagues in the museum field led to his active involvement in the affairs of SAMA. Here too, his contribution is remembered with gratitude.'*

**PROFESSOR J. R. GRINDLEY**  
**SAMA Vice-President for 1974–1976**

It was at Professor Grindley's initiative that the SAMA Computer Group was established at a meeting at the C.S.I.R. in Pretoria during October 1973 and Prof. Grindley continued to serve as Chairman of this Group till 1979, laying the groundwork for the efficient documentation of museum collections. Prof.



36.  
Professor G. R. Grindley

Grindley's original Committee, now reconstituted as the Documentation Group, continues to do most valuable work.

Born in Cape Town in 1935 and trained at the University of Cape Town, Prof. Grindley's museum career started in 1960, when he became Curator of Marine Invertebrates at the South African Museum. From 1967 till 1975 he was Director of the Port Elizabeth Museum Complex, where the new Oceanarium, Tropical House and Historical Museum were established during his Directorship. In 1975 he moved to a professorship in the School of Environmental Studies at the University of Cape Town, but he fortunately retains close links with the museum profession in southern Africa.

**MISS E. M. SHAW**  
SAMA President for 1977-1979

There is surely no person more familiar with every aspect of the Southern African Museums Association than is Margaret Shaw. Her familiarity was gained during 15 arduous years as Honorary Secretary, culminating with two years as SAMA President, followed by renewed service to the Council. For many of us, during these two decades, Margaret Shaw was the Museums Association, always available and ready to help with any task. It was she who worked late into the night during annual conferences, preparing her meticulous minutes, agendas and reports, arranging programmes and reminding forgetful Presidents of their duties and responsibilities. And all this was done with so gentle and restrained a grace that it would have been hard indeed not to respect and admire her.

Born and bred in Cape Town, Miss Shaw qualified in social anthropology and history at the University of Cape Town before beginning her life-long career in ethnology at the South African Museum,

interrupted only by wartime service in the Corps of Signals. In 1969 she was appointed Assistant Director of the South African Museum until her retirement in 1976. Although she gave such excellent service to her own institution, her concern for museums has always had a wider scope, as evidenced by the topics of her two Presidential Addresses<sup>57, 58</sup> on *Ethnology in southern African museums* and *ICOM resolutions and activities during the past five years*.

It is most appropriate that the Southern African Museums Association should have extended Honorary Life Membership to Miss Shaw in 1980 and its Honorary Fellowship in 1985 in recognition of her unflinching contributions to a profession that she still serves so well.

**DR J. J. OBERHOLZER**  
SAMA President for 1979-1982

Born in Krugersdorp in 1936, and originally trained as an entomologist, Dr Oberholzer's career moved through agriculture and nature conservation before he was appointed Director of the National Museum, Bloemfontein, in 1970. He held this post with distinction until late 1985 when he became Chief Director of the Museums Department in the Durban Corporation. During Dr Oberholzer's directorship of the National Museum, this institution's staff complement grew from 18 to 125, while five satellite museums were added to the complex.

Dr Oberholzer's career has been characterized by prodigious activity, and this has certainly flowed to the benefit of SAMA. Apart from his term as President and six year's service on Council, he has thrown his energies into the Education, Fund-raising and Accreditation Committees. His representation on a variety of national bodies has greatly helped the promotion of the Museum Association in official circles.



37.  
Miss E. M. Shaw



38.  
Dr J. J. Oberholzer

A witty, charismatic speaker, Dr Oberholzer has been much in demand at SAMA conferences for the last 15 years, particularly memorable being his contributions on the history of aviation. His two Presidential Addresses were entitled *Navorsingswerk in museums*<sup>59</sup> and *Towards the nineties*.<sup>60</sup> In the latter address, Dr Oberholzer gave an extremely useful personal estimation of SAMA's strength and weaknesses, and made various proposals for future developments, which are discussed elsewhere in this history.

**MR M. J. LE ROUX**  
SAMA Vice-President for 1979–1981

A well-known and popular member of the Association, Marius (Marthinus) le Roux was born in Witbank, Transvaal, in 1938, but grew up in Cape Town. After graduating from Stellenbosch University he joined the Rembrandt Group of Companies and was subsequently appointed Head of the Rembrandt Van Rijn Art Foundation. In 1969 he joined the staff of the Stellenbosch Museum where he is currently the Director.



39.  
Mr M. J. le Roux

One of Mr le Roux's cultural historical investigations was of copper and brass at the Cape and this led to the publication of a most attractive book<sup>61</sup> in 1981 entitled *The Cape Copper-Smith*.

**DR R. H. VAN NIEKERK**  
SAMA President for 1981–1983

Dr van Niekerk served on the SAMA Council for four years prior to his election as SAMA President in 1981. He was Professor of Fine Arts at the University of Natal before becoming Director of the National Gallery in Cape Town in 1976, a position he still holds.

Born in Bloemfontein, Dr van Niekerk studied at the Courtauld Institute of Arts in London before returning to teach at the University of Natal. His eloquent Presidential Address of 1982 was introduced with Ian Finlay's statement '*The ideal museum is a work of art in its own right, whether its field be art or science*', and Dr van Niekerk went on to show how '*the visual arts, in the broadest sense, are of relevance to all of us in the museum profession. You are aware that, at some time or another, as a result of the way you present your collections to the public, of the way you label an exhibit, design a poster, or paint a room, your taste, your judgement will be called into question. We are, in that sense, as much on display as our collections. While some of us may be in the fortunate position of having talented display artists on the staff, and others may be able to trust to a sure eye, all of us are faced with the challenge of producing a visible statement that is to be judged by standards that come from the field of art and design. Even if we wish to confine ourselves to the simplest didactic statement, the same aesthetic criteria will apply. So to matters of art we are obliged to pay due attention.*'<sup>62</sup>

The National Gallery today, thanks to Dr van Niekerk's talent and energy, remains a living embodiment of the concept that *the ideal museum is a work of art in its own right*.



40.  
Dr R. H. van Niekerk

## MR C. S. HOLLIDAY

SAMA Vice-President for 1983–1985 & 1985–1986

Although both natural history and art museums are well represented within the Southern African Museums Association, it is unusual for any one person to combine both disciplines within the orbit of a single career. Yet, this is what Clayton Holliday has done. Born in Pietermaritzburg in 1930, he joined the staff of the Natal Museum in 1950, working with Dr P. A. Clancey on the birds and mammals of Natal. In 1957 he moved to the Rhodes-Livingstone Museum in Zambia where his fieldwork included the study of archaeology, mammals and birds.

Returning to South Africa in 1966, Mr Holliday was awarded a degree in fine arts by the University of Natal in 1969 and he then held the post of Deputy-Director of the South African National Museum of Military History in Johannesburg, before being appointed Director of the King George VI Art Gallery in Port Elizabeth, a post he has held for the last 13 years.



41.  
Mr C. S. Holliday

Throughout his career Mr Holliday has taken an active interest in the promotion of the museum profession. His association with SAMA has spanned 35 years since he first became a student member in 1950. In 1955 he was the first South African student to attend the British Museums Association Technical Certificate and Diploma training courses in England. Since then he had a long record of service to the SAMA Education Committee.

Currently a member of the Board of Trustees of the Port Elizabeth Museum, Mr Holliday is completing two books on South African artists: *Maurice Weightman, 1907–1967* and *Fred Page, South African Surrealist*.

## THE INDISPENSIBLE HONORARY SECRETARIES

Presidents may come and Presidents may go, but the work of the Honorary Secretary goes on for ever. So it is fortunate that the Association has had among its members people willing and able to cope with this never-ending flow of work, without remuneration, and sustained only by their enthusiasm for the cause.

At SAMA's inaugural meeting, Mr E. C. Chubb (see under SAMA President for 1943–1944) was elected Secretary/Treasurer, a position he held for 25 years, interrupted only by his year as President when Mr A. L. Bevis stood in for him. He was succeeded by Miss E. M. Shaw (see under SAMA President for 1977–1979) who commenced her 15-year term as Honorary Secretary in 1962. When she decided to stand down in 1977, the position was filled for two years by Dr Brian Kensley, a zoologist at the South African Museum, who subsequently moved to the Smithsonian Institution in Washington.

During 1979–1980 the Honorary Secretaryship was assumed by Miss Christine van Zyl, who was then a Professional Officer at the National Cultural History Museum in Cape Town, before she moved to Gencor Ltd in Johannesburg. For 1981 the responsibility was carried by Mrs Betty Paap, Curator of the William Fehr Collection in Cape Town.

For the following five years, until October 1985, the Association had the benefit of the efficient and enthusiastic services of Mr Joe Dolby, a Cape Town-born fine arts graduate who has worked at the South African National Gallery since 1980 and is currently Curator of Prints and Drawings there.

When Mr Dolby found it impossible to continue as Honorary Secretary in 1985, the position was assumed by Mrs M. C. Erasmus, who has been Administrative Officer at the Transvaal Museum for the past 17 years and whose interest in the museum profession developed during this time.

Since the time when Miss Shaw was Honorary Secretary, the Association has maintained an office at the South African Museum, ably and efficiently manned on a part-time basis by Mrs Anne Lawton.

## THE ASSOCIATION'S JOURNAL: SAMAB

The minutes of SAMA's inaugural meeting, held in April 1936, read as follows:

*'Prof. Maingard stated that an important activity of the Association should be the issue of a publication, and suggested that the Secretary obtain information as to the approximate cost for the guidance of the Council. Dr Arnold considered that this should be issued at regular intervals as often as circumstances permitted, and it should include technical articles of a practical and helpful nature, lists of duplicates available for exchange, and information regarding the research work being carried out at the various institutions.'*

With Mr E. C. Chubb as Editor, the first issue of this proposed publication, entitled *SAMAB*, appeared in September 1936. Mr Chubb continued as Editor of this quarterly publication until his retirement in 1962 when the responsibility was assumed for a year by Dr R. F. Lawrence. During 1964 and 1965 the editing was undertaken by Dr J. A. J. Mees-



42.  
Two former Honorary Secretaries of the Association: Miss E. M. Shaw (1962–1977)  
and Mr Joe Dolby (1981–1985).

ter, former Curator of Mammals at the Transvaal Museum, Director of the Kaffrarian Museum and now Professor of Biological Sciences at Natal University in Durban. From 1966 till 1970, Dr C. K. Brain served as Editor, to be followed by Mrs E. A. Voigt, archaeozoologist at the Transvaal Museum and SAMA Education Committee Chairman. In 1975, the present Editor, Dr Erich H. Bigalke, Director of the East London Museum, assumed duty and in the past 10 years his service to the southern African museum community has been very considerable.

Since its inception, *SAMAB* has run to 16 volumes containing a total of 5797 pages. Apart from innumerable items of interest, *SAMAB* has carried 1272 articles on museological topics and serves as an effective vehicle for the transfer of ideas and information between museum professionals.

#### A FORUM FOR DISCUSSION AND DEBATE

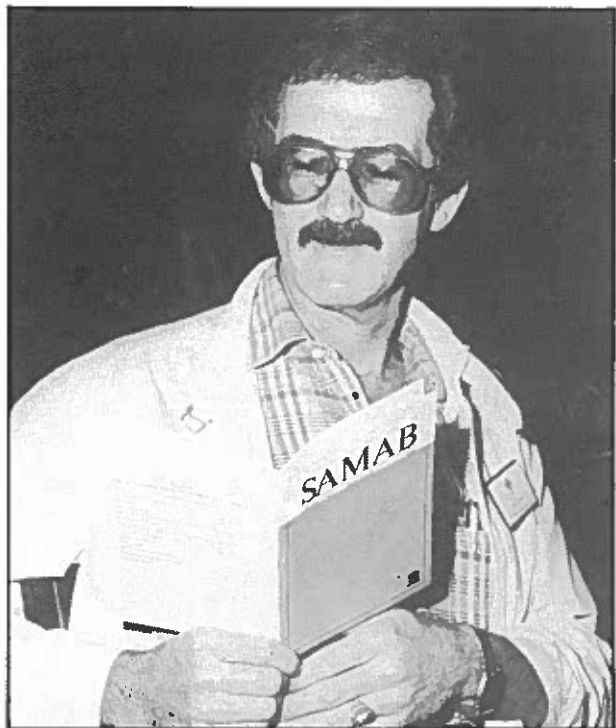
Since its inaugural meeting in Kimberley in 1936, the Southern African Museums Association has met in 22 different towns and cities, ranging as far afield as Blantyre, Livingstone, Maputo and Windhoek, while four cities, Johannesburg, Durban, Cape Town and East London have provided the venue on no fewer than four occasions (see the accompanying map). As indicated in the graph, attendance at these annual conferences has fluctuated a good deal, with the highest attendance figure, in excess of 200 delegates, at the 1979 meeting in Stellenbosch.

During the annual conferences, every topic of museological interest in southern Africa has surely been discussed and more than 1200 of the papers presented have been published in the Association's journal *SAMAB*.

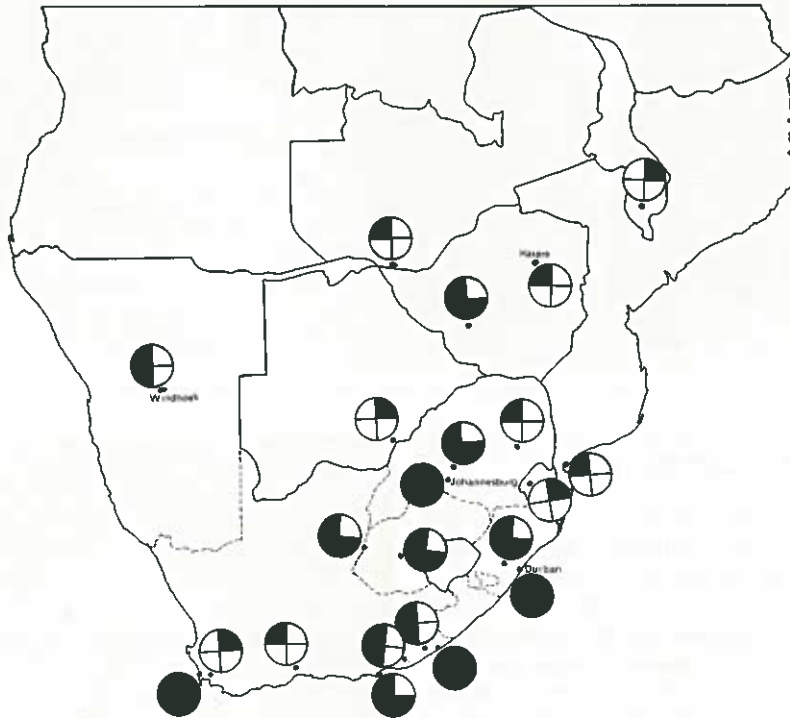
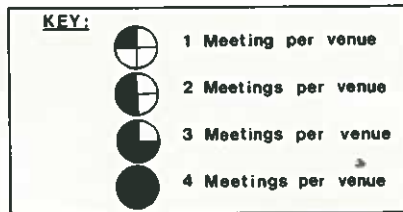
When Dr Vivian FitzSimons died in 1975 he left a sum of money to the Association and this was subsequently augmented by an anonymous donation arranged by Mr Clayton Holliday. Since 1979 a "Fitz-

Simons Award" has been made each year to the SAMA member who, in the opinion of a panel of judges, gives the best paper at an annual conference. The most recent recipient has been Mr C. Till, for a paper he gave at the 1985 Conference in Grahams-town.

It has been traditional for many years for sectional meetings to be held in the course of each Annual



43.  
Dr Erich Bigalke, Editor of the Association's journal *SAMAB* for the last 10 years, has been the Director of the East London Museum since 1974. After obtaining his doctorate at Queens University of Belfast, he joined the East London Museum staff in 1966 as Ethnologist and was the founder of the SAMA Eastern Cape Regional Group, of which he is the current Chairman.

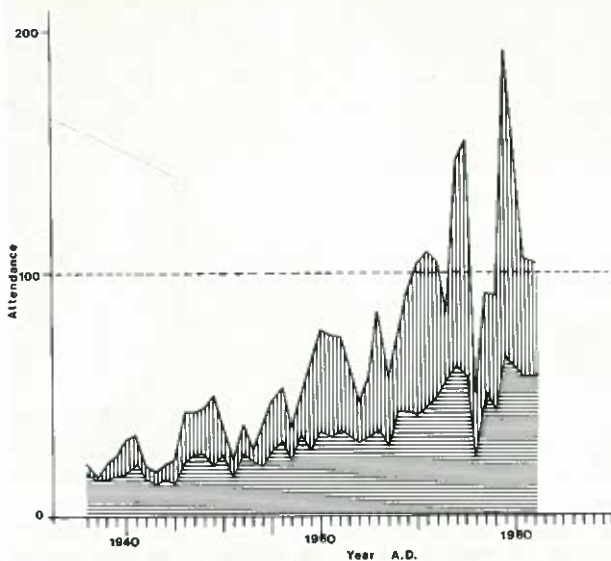


44. Map of southern Africa showing the venues at which SAMA Annual Conferences have been held.

SAMA Conference, the subjects being Art, Anthropology, Cultural History and Natural History. Each group elects its own Chairman and Secretary and produces its own Newsletter which is sent to members during the course of the year.

The most recent sectional group to come into existence is the Museum Library Group, which held its first meeting in the course of the 1985 SAMA Conference in Grahamstown, at the initiative of Ms Marianne Hölscher of the South African National Gallery. The aims of the Group are to promote better understanding of the museum library, increased co-operation between museum librarians and the encouragement of research in the field of museum libraries.<sup>63</sup> At the first meeting held on 23 April 1985, Ms M. Hölscher was elected Chairman and Mrs D. van Driel, Librarian at the Transvaal Museum, as Secretary.

A very important development within the Association has been the establishment of Regional Groups which not only draw many new members to their local meetings, but maintain the activity of the Association between its regular annual meetings. First to be formed was the Western Cape Regional Group, inaugurated in 1975, and which held its 13th meeting in Swellendam in 1985. More recently, in August 1982, the inaugural meeting of the SAMA Eastern Cape Group was held at the East London Museum, when Dr E. H. Bigalke was elected Chairman. More recently still the Natal Regional Group was started in 1984 in Pietermaritzburg and held its second meeting in March 1985 with Dr Jason Londt, Assistant Director of the Natal Museum, as Chairman.



45. Graph of attendance at SAMA Annual Conferences since 1936. The upper line indicates total delegate attendance; the lower line shows institutional representatives.



46. Delegates to the 40th Annual Conference of SAMA held in Blantyre, Malawi, in June 1976, as guests of the Museum of Malawi. SAMA President Col. George Duxbury is standing beside the Life President of Malawi, His Excellency Ngwazi Dr H. Kamusu Banda, who entertained the delegates at his residence.



47. Professor Margaret Smith, former Director of the J. L. B. Smith Institute of Ichthyology in Grahamstown, in discussion. Windhoek 1983.



48. Professor P. J. Nienaber representing the Provincial Museums Service of the Orange Free State. Windhoek 1983.



49.  
Mr C. G. Coetzee, Director of the State Museum, Windhoek, addressing the Annual Meeting of SAMA.



52.  
Prof M. A. Raath, Chairman of SAMA's Natural Sciences Section and long-time participant in the affairs of the Association. Before becoming Director of the Bernard Price Institute for Palaeontological Research and Professor of Palaeontology at the Witwatersrand University, he was Executive Director of the National Museums and Monuments of Zimbabwe.



50.  
Dr Brian Stuckenberg, Director of the Natal Museum, in fighting stance at the 1983 Annual Meeting of SAMA.



51.  
Mr C. M. Till, Director of the Johannesburg Art Gallery, receives the FitzSimons Award from Mrs Brian Wilmot for the best paper delivered at the 1985 SAMA conference. Grahamstown, April 1985.



53.  
A Museum Library Group came into existence at the 1985 SAMA conference in Grahamstown. Ms Marianne Hölscher (right), Librarian at the National Gallery in Cape Town, was elected Chairman, while Mrs Dinah van Driel, Transvaal Museum Librarian, is the Secretary.

# The Making of the Museum Professions in Southern Africa

## TRAINING FOR THE MUSEUM PROFESSIONS: THE WORK OF THE EDUCATION COMMITTEE

One of the most valuable services that an Association such as SAMA can render is in the training of people for their professional work in museums, whether this be technical, curatorial, or administrative. In SAMA's case the responsibility for this service rests with the Education Committee, which was first constituted when Council met in Pietermaritzburg in March 1955. The driving force behind this development was Dr John Pringle, who served as Education Committee Chairman until 1971. The Committee's initial aim was to arrange training and examinations in South Africa for the Diploma and Technical Certificate of the British Museums Association. In order to achieve this, six South African museum people were awarded Fellowship of the British Museums Association so that they could serve as moderators for local museum workers who registered for the diploma. In the early sixties, some of the recipients of the Diploma were Dr J. Desmond Clark, Dr B. Reynolds, Miss A. Blignaut (now Mrs Inskeep) and Mrs D. Strutt. At this time SAMA was advised to arrange its own Technical Certificate rather than to try to award the qualification through London. Despite this, a few SAMA members did do the British Technical Certificate.

In 1959 the Education Committee structure was changed to consist of two committees of three, one to be responsible for art, the other for the remaining disciplines. The following year a Technical Certificate of SAMA was announced<sup>64</sup> based on regulations for the British equivalent, while in 1962 it was proposed that museum technical officers should meet to discuss the new training scheme. This was done during the 1963 SAMA conference in Port Elizabeth, thereby starting the series of Technical Conferences that have continued ever since. Among the first recipients of the Technical Certificate was Mr R. Rau, South African Museum, who has subsequently done a great deal in the training of Technical Certificate candidates himself.

In 1971 Dr Pringle retired as the Education Committee Chairman and Council restructured the body to consist of two sub-committees, one concerned with the Technical Certificate and one with the Diploma, under a co-ordinating Chairman, in the person of Dr Richard Liversidge. He was supported by Miss Fiona Barbour as Secretary, together with Mrs Adi Inskeep and Dr Pringle on the Diploma side, and four members, Mr E. Hayden, Mr C. S. Holliday, Dr P. A. Clancey and Mr W. S. Rees concerned with the Technical Certificate.

Miss Barbour succeeded Dr Liversidge as Education Committee Chairman in 1975, followed by Mrs Elizabeth Voigt for the 1979-1980 term. After this Mr Udo Küsel served for two years before Mrs Voigt returned to the position which she currently holds.



54. Three members of the McGregor Museum staff who have been particularly active in the Association's Education Committee. They are Dr Richard Liversidge, Miss Nancy Tietz and Miss Fiona Barbour.



55. Mrs Elizabeth Voigt, Chairman of the SAMA Education Committee, former Editor of *SAMAB* and active Association member since 1967, started her museum career as Archaeologist at the South African Museum. She moved to the Transvaal Museum in 1969 where she is now Head of the Department of Archaeozoology. She is shown examining a skull of an ancient dog.

## The Technical Certificate

The Technical Certificate was introduced in 1963 in response to demands from technicians in southern African Museums for practical training in their museum work. In 1976 it became necessary to redraft the regulations and syllabi to meet requirements of the Human Sciences Research Council so that the Technical Certificate would be recognized officially by the state and provincial administration for salary purposes. It has been accorded the grading 'N+1' or standard 9. The regulations as originally published<sup>65</sup> were amended in 1982<sup>66</sup> and the Technical Certificate is currently offered in 10 subjects. The following table, compiled by Technical Certificate Secretary Miss R. M. Tietz, gives details of the number of registrations and the pass rate according to subjects:

Subject	Number of Registrations	Preliminary Examinations Passed	Certificates Awarded
1. Archaeology	2	0	0
2. Art work	12	5	2
3. Biology	7	4	2
4. Cultural History	9	3	2
5. Ethnology	1	1	0
6. Geology	1	0	0
7. Palaeontology	2	1	1
8. Photography	3	3	3
9. Zoological preparation	23	19	15
10. General techniques	12	6	4
<b>Totals</b>	<b>72</b>	<b>42</b>	<b>29</b>

Successful candidates and their subjects have been as follows; an asterisk indicates a pass with distinction, in excess of 80%:

1965. Mr P. J. Buys, State Museum, Windhoek (Taxidermy).  
Mr H. J. van Schalkwyk, State Museum, Windhoek (General Techniques).
1966. Mr E. Hayden, East London Museum (Taxidermy).
1967. Mr C. Booth, South African Museum (Photography, Taxidermy).
1968. Mr W. Wimmel, South African Cultural History Museum (Cultural History\*).
1969. Mr T. Coffin-Grey, National Museum, Bulawayo (Taxidermy\*).\*  
Mr J. van Veelen, Transvaal Museum (General Techniques\*).
1970. Mr R. Black, Umtali Museum (Taxidermy, Art, General Techniques).
1971. Mr K. W. M. Oake, National Museums, Zimbabwe (Taxidermy).
1972. Mr J. Adams, South African Museum (Taxidermy).  
Mr M. T. Petersen, South African Museum (Taxidermy).  
Mr P. Pretorius, South African Museum (Taxidermy).  
Mr K. W. M. Oake, National Museums, Zimbabwe (Art work).
1974. Mrs T. Donnelly, National Museum, Bulawayo (Art work).  
Mr R. Pletts, National Museum, Bulawayo (Taxidermy).

1977. Mr H. L. Rust, Transvaal Museum (Taxidermy).
1978. Mr R. C. Goetz, Durban Museum (Cultural History, Photography).  
Mr S. X. Kannemayer, South African Museum (Photography\*).
1979. Mr J. C. Taylor, Queen Victoria Museum (Palaeontology).
1980. Mr G. Esau, South African Museum (Taxidermy).
1981. Mr D. M. C. Smit, National Museum, Bloemfontein (Taxidermy).  
Mr S. W. F. D. van Ee, National Museum, Bloemfontein (Taxidermy).
1982. Ms E. M. Jones, National Museum, Bulawayo (Biology\*).

1983. Mr P. K. P. Brown, East London Museum (Zoological Preparation).  
Mr B. C. Nongane, Albany Museum (Biology).
1984. Mr D. M. Faranisi, Queen Victoria Museum (General Techniques).

A major contribution to the cause of technical training was made in 1971 when *An annotated bibliography for museum technical officers* by Mrs Adi Inskeep was published in *SAMAB*,<sup>67</sup> one of the many services to the Southern African profession rendered by this enthusiastic museologist before she moved to Oxford.

## SAMA Technical Conferences

These conferences have been organized from time to time at different venues, providing museum technical staff with an opportunity to meet and exchange ideas:

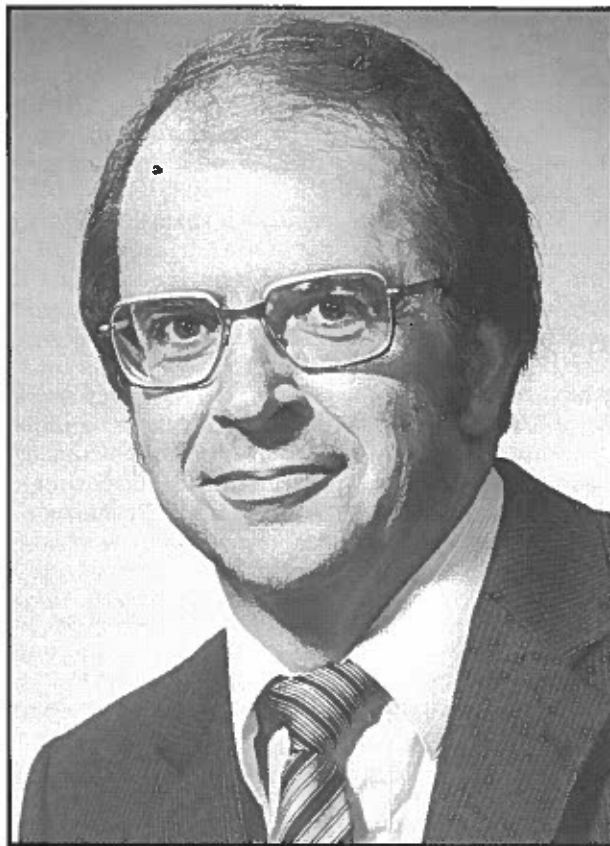
- 1964, June 8-12. Natal Museum, Pietermaritzburg. Organized by Dr J. A. Pringle as Chairman of the Education Committee; 25 delegates attended.
- 1967, January 9-14. South African Museum, Cape Town. Organized by Dr J. A. Pringle and Miss E. M. Shaw; 27 delegates attended and Mr Clayton Holliday was elected Chairman.
- 1971, March 1-5. South African Cultural History Museum. Invited speaker Dr A. E. Werner was present and Mr Terrence Coffin-Grey was elected Chairman.
- 1973, June 25-29. National Cultural History and Open Air Museum. Organized by Mrs K.

- Roodt-Coetzee; 77 delegates attended and Mr A. Fourie was elected Chairman.
- 1975, 29 September – 3 October. National Museum, Bloemfontein. Organized by Dr J. J. Oberholzer; Mr A. Strydom was elected Chairman.
- 1977, 23 February – 2 March. South African Museum and South African National Cultural History Museum. Organized and chaired by Mr R. Rau and Mr H. Fransen; 96 delegates attended.
- 1980, June 16–19. Port Elizabeth Museum. Organized and chaired by Mr Nielen Schaefer; 70 delegates attended.
- 1982, July 20–23. Transvaal Museum. Organized by Mrs Imogen Chesselet and Miss Lomi Wessels; 77 delegates attended and Mr Udo Küsel was elected Chairman.
- 1984, September 25–27. McGregor Museum, Kimberley. Organized by Miss R. M. Tietz and Mr A. K. Bazzard; 105 delegates and 10 invited speakers attended; Mr Nielen Schaefer was elected Chairman.

### Educational Officers' Conferences

In recognition of the important work that Education Officers do in museums, SAMA members have already organized seven conferences where the specific problems of this side of the profession are discussed. Some details will now follow:

- 1972, March. Natal Museum, Pietermaritzburg. A workshop limited to 10 people was organized by Dr Maureen Michaw of the Natal Museum.



56. Mr Nielen Schaefer, Chairman of the SAMA Technical Section, Education Committee Secretary, and twice the winner of the FitzSimons Award for the best paper presented at a SAMA conference. Mr Schaefer is Display Manager at the Port Elizabeth Museum.



57. Organizers of the SAMA Technical Conference held at the Transvaal Museum in July 1982: Mrs Imogen Chesselet (left) and Miss Lomi Wessels, with the Conference Chairman, Mr Udo Küsel.

- 1973, May. Transvaal Museum, Pretoria. A conference organized by Mr F. Morkel drew 22 delegates.
- 1976, July. McGregor Museum, Kimberley. Organized by Miss F. H. Barbour and chaired by Mr B. C. Stevens; there was an attendance of 28 delegates.
- 1978, July. Albany Museum, Grahamstown. The meeting chaired by Dr J. J. Oberholzer attracted 31 delegates.
- 1980, November. Potchefstroom Museum. Several of the papers presented at this conference appeared in *SAMAB* 14(5).
- 1983, October. Albany Museum, Grahamstown. The conference organized by Ms S. van Zyl attracted 44 delegates.
- 1985, October. Natal Museum, Pietermaritzburg. Organized and chaired by Miss I. Bornman.

### Courses and Workshops

The Education Committee has been involved in the organization of various training courses and workshops. These have included three courses at universities in conjunction with extra-mural studies departments:

- 1972, January. University of Cape Town Museology School, organized by Prof. R. Inskeep.
- 1984, January. Potchefstroom University for C.H.E. "Contact: Museums in the Modern World", organized by Mrs E. A. Voigt with an attendance of 53 delegates.
- 1985, July. Rand Afrikaans University. "Museums in the Marketplace", organized by Mrs E. A. Voigt in collaboration with the Department of Communication Science; 33 delegates attended.

Finally, regular workshops are organized at various museums in collaboration with SAMA's Education Committee. Some of the recent ones were these: *A Silver Workshop* at the South African Cultural History Museum in Cape Town; a workshop on *Silkscreen Printing* at the McGregor Museum in Kimberley; one on *Fire Arms* at the South African National Museum of Military History in Johannesburg; *The Curation of Natural History Collections* held at the Transvaal Museum in Pretoria; *The Preservation of Leather* run by the Transvaal Provincial Museum Service at Pilgrim's Rest; *The Management of Picture Collections* at the Africana Museum in Johannesburg, and *The Restoration of Dolls* at Melrose House in Pretoria.

### The National Diploma in Museum Technology

In 1971, representatives of the SAMA Education Committee opened negotiations with the Cape Technikon for the establishment of a National Diploma in Museum Technology. The first intake of students for this long-awaited technical course for actual and intending museum personnel began their studies in July 1978, the entrance qualification being the Senior Certificate and the duration of the course three years. During the first semester each year (a total of 18 months) the students undergo practical training under the supervision of qualified museum staff; dur-

ing the second semester of each year (a total of 18 months) the students receive academic training under supervision of the college.

The course has relied heavily on the co-operation of SAMA members at Western Cape museums and has experienced some difficulty in recruiting adequate numbers of students.

### A proposed correspondence Technical Diploma

In 1982 the Education Committee undertook a survey of training requirements for museum personnel and the resulting extensive report by Mrs Elizabeth Voigt<sup>68</sup> was submitted to the Department of National Education and thence to the National Advisory Committee for Museums. As a result of this survey there appeared to be justification for the establishment of a correspondence Technical Diploma. Following unsuccessful negotiations with UNISA for a correspondence course, the Education Committee opened negotiations with Technikon RSA in Johannesburg and these negotiations are proceeding, with draft curricula being prepared for approval by the Technikon.

### Post-graduate Diplomas in Museology

The Universities of Pretoria and Stellenbosch are both currently offering Post-graduate Diplomas in Museology for students who already have an appropriate Bachelor's degree. Both courses are run with the active co-operation of the staff of local museums. The Pretoria University course is under the direction of Professor P. G. Nel, Head of the Department of Afrikaans and Netherlands Cultural History, and has attracted between 10 and 28 students annually since 1976. Students obtain their diploma in one of three specializations: Cultural History, Art or Natural History.

The Stellenbosch University course is run under the direction of Professor B. Booyens, who has published details of the course in *SAMAB*.<sup>69</sup> Students on the course establish close contact with museums in Stellenbosch and Cape Town and obtain most valuable instruction from the qualified staff there.

These two courses represent a substantial service to the museum professions in southern Africa in the provision of training indispensable for proper museum management.

### MANAGING MUSEUM COLLECTIONS: THE WORK OF THE DOCUMENTATION GROUP

It was in 1983 that the Documentation Group evolved naturally out of its forerunner, the Computer Group, and became a Standing Committee of the Council, with its own representative there.

It has long been realized that a prime responsibility of museums is the documentation of their collections. Ideally every item in a museum collection should have as much data recorded about it as possible and this information should be easily accessible and retrievable. As collections grow, the problems associated with this process increase and the use of a computerized system for data recording and retrieval has clear advantages. So it was that at the 1973 annual meeting of SAMA Prof. John Grindley (see

SAMA Vice-President for 1975–1976) gave a lecture on the computerization of museum collections. Considerable interest was shown and the Computer Group was formally constituted<sup>70</sup> at a meeting in Pretoria on 2 October 1973 with Prof. Grindley as the first Convenor, a position he held till 1979. The initial aims of the Computer Group were these:

- To investigate data management systems, including the setting up of pilot schemes.
- To investigate the availability of a powerful computer facility.
- To focus the attention of funding bodies on the desirability of computer-based data management. A report in this connection was submitted to the Niemand Commission.
- To investigate the costs of conventional museum documentation systems.
- To develop recording standards for different disciplines.
- To recommend or develop standard terminologies for use in different disciplines.
- To compile a directory of collections by subject, names of collections and institutions.

During this period eight newsletters of the Computer Group were produced.

In 1979 Miss Lelong Immelman became Convenor of the group. An active and enthusiastic museologist, Miss Immelman has been with the Transvaal Provincial Museum Service for ten years, currently holding the position of Chief Museum Human Scientist. Trained at the University of Cape Town, Miss Immelman started her museum career as Ethnologist at the East London Museum.

In the late 1970s, as finance continued to pose a problem, the emphasis of the Computer Group's activities changed to maintaining a watching brief on



58. Miss Lelong Immelman, Chairman of the SAMA Documentation Group and enthusiastic supporter of computers for museum data management.

the development of museum computerization overseas, as well as co-ordinating and stimulating the computerization of museum records through the distribution of information. During the early 1980s, various projects were launched, such as these: the development of Essential Information Categories and Recommended Information Categories in museum records, on which a final report will be presented in 1986; a survey of the current state of documentation in southern African museums, on which a report was presented at the 1984 SAMA Conference in Johannesburg; a National Seminar on Museum Documentation was held in 1983, while regular workshops on information- and systems-analysis were held; and, finally, membership of the ICOM Committee on Documentation, known as CIDOC, was obtained.

It was in 1983 that the name of the Computer Group changed to that of the Documentation Group in order to reflect the wider interests of its members.

In this new situation, Miss Lelong Immelman was again elected Chairman with Mr G. Balkwill, a knowledgeable computer enthusiast from the Witwatersrand University's Bleloch Museum, as Secretary. Other members of this first Committee were Dr M. A. Cluver, Dr S. Monnick and Mr P. Locke.

In her 1985 Chairman's Report, Miss Immelman was able to say that the Newsletter was now being shared with the newly formed Museum Library Group, due to a closeness of interests. Furthermore, no fewer than seven articles on documentation matters had appeared in *SAMAB* during the preceding year, indicating the importance which this subject is assuming within the southern African museum professions.

#### STANDARDS FOR MUSEUMS: THE WORK OF THE ACCREDITATION COMMITTEE

During the 1972 SAMA Conference in Pretoria, Dr T. H. Barry, Mr R. F. H. Summers and Miss E. M. Shaw submitted a short memorandum on the need for the establishment of certain minimum requirements for institutions calling themselves museums. Concern was expressed about the permanence of collections in our museums and it was suggested that museums that did not conform to certain minimum standards of security, preservation, documentation, display and financial viability should be forbidden by law to call themselves museums and should not be supported by public funds. This would involve the working out of minimum standards and the establishment of a list of museums that comply with such standards.

It was decided that a small committee should be established to attend to these tasks and Council appointed Dr Barry and Miss Shaw, while Mr Summers was subsequently co-opted.

The following year when the Association met at Oudtshoorn in March 1973, Dr Barry, Mr Summers and Miss Shaw presented a paper<sup>71</sup> on museum accreditation, setting out the eight basic requirements of all museums and making the following recommendations:

1. That the names *museum*, *art gallery* and *herbarium* be restricted to accredited institutions which conform at least to the minimum requirements.



59. The SAMA plaque for use on accredited museums being held by Miss Margaret Shaw.

2. That a SAMA Accreditation Committee be set up as soon as possible to examine the claims of institutions and draw up a register of those that conform to the basic requirements.
3. That steps be taken to promote legislation to protect the names *museum*, *art gallery* and *herbarium* and to give legal standing to the Accreditation Committee.

4. That a recommendation be made to the Government that only accredited institutions be supported from public funds.

In the years that followed, the Accreditation Committee was established as a Standing Committee of Council with Dr Barry as its first Convenor, followed by Miss Shaw. Others who served on this Committee were Col. G. R. Duxbury, Dr R. L. Liversige, Dr J. J. Oberholzer, Dr R. H. van Niekerk, Dr J. Wallace and Mr U. Küsel.

Ten years after their first paper on the subject, Dr Barry, Miss Shaw and Mr Summers reported<sup>72</sup> on progress that had been made. They reiterated the eight criteria to which museums should conform as being:

1. A permanent collection.
2. A permanent building.
3. An autonomous governing body.
4. Financial viability.
5. A paid permanent staff.
6. Safety of the collections.
7. Documentation.
8. Safe and convenient access for the public.

Although these appear to be basic criteria which would easily be met by most museums, this has proved not to be the case and, in 1983, Dr Barry and his colleagues reported that only three southern African museums had been accredited at that stage. At the time of writing, in 1986, the total has risen to four. For many of the larger, long-established museums the difficulty in reaching the required standards lies in details of the safety and documentation of the very large collections. Active attention is now being given to these matters with decidedly beneficial results.

The southern African museums who have already attained accreditation are these and to their staff the congratulations of the Association are extended: William Campbell Museum, Durban; C. P. Nel



60. A Certificate of Accreditation for the C. P. Nel Museum in Oudtshoorn being presented to Mrs E. M. Neethling, Cape Provincial Museum Services, by Col. G. R. Duxbury, Grahamstown, 1985. Miss E. M. Shaw looks on.

Museum, Oudtshoorn; Voortrekker Museum, Pietermaritzburg, and the Worcester Museum.

### THE PROMOTION OF MUSEUM RESEARCH

Research at southern African natural history museums has long been a very important and productive activity, but it has often been curtailed by a lack of money. In this respect the financial assistance of the Council for Scientific and Industrial Research has been very significant, and grants in aid of specific research projects have been made since the C.S.I.R.'s very early days in 1948. From those days the Museums Association has maintained a Research Grant Screening Committee, at the request of the C.S.I.R., whose purpose has been to receive, examine and recommend applications for research grants and to forward them to the C.S.I.R. for attention. Members of the first Research Grant Screening Committee, constituted in 1948, were Professor R. H. Compton, Chairman, Dr V. F. M. FitzSimons, Dr S. H. Haughton and Mr R. F. Kennedy. In more recent years the task of convening the Committee has fallen largely to Dr T. H. Barry or Dr C. K. Brain.

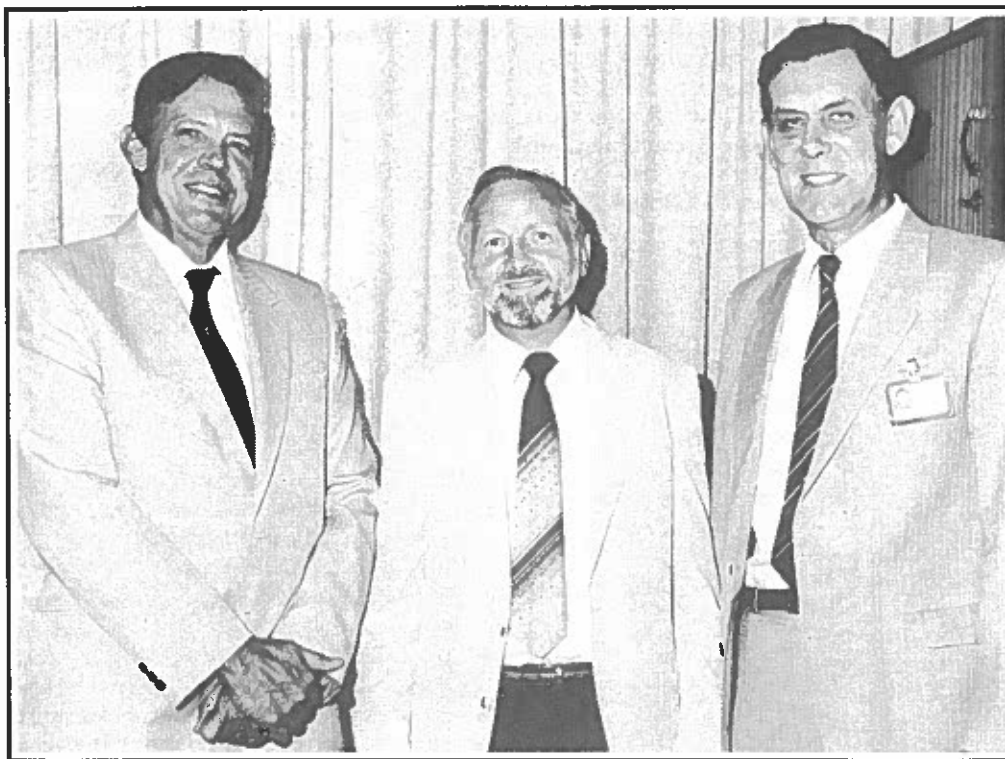
At the 1981 SAMA Conference in East London, a panel discussion on museum research was held at which we were fortunate to have the President of the C.S.I.R., Dr C. F. Garbers, as guest speaker. In his vote of thanks to Dr Garbers, Dr Brain pointed out that C.S.I.R. support of museum research frequently made the difference to museum scientists between being able to do the work, or simply not being able to afford it at all. While the total amount of money involved was not very large, the scientific output resulting from it was highly significant. In this regard, Dr Brain jokingly remarked that the name of the

*University Research Division*, responsible for allocating the money, was inappropriate in that it did not reflect the museum-based component of the effort. Dr Garbers took the point and the name was changed to the *Research Grants Division* of the C.S.I.R., to accommodate non-university research that was supported.

At the head of this Division, over many years, has been Mr W. J. Weideman, whose contribution to the promotion of museum research has been very considerable indeed. This contribution has been made through Mr Weideman's intense personal interest in the museum research projects, but even more importantly, his interest in the people undertaking them. There is no question that the money which Mr Weideman's Division had available for distribution was used in the most efficient of manners.

During the early 1980s the C.S.I.R. obtained the services of Professor J. S. de Wet as special advisor to the C.S.I.R. Executive on the research grant system being applied to universities and museums. The result was the merging of the Research Grants Division with the Co-operative Scientific Programmes and the creation of a new body, the *Foundation for Research Development* (F.R.D.) with C.S.I.R. Deputy-President, Dr R. R. Arndt, at its head. The new research grant system became known as the Main Research Support Programme, which has been described as follows<sup>73</sup>:

*'The Main Research Support Programme is a programme for the support of full-time members of staff of Universities and Museums. There are no favoured fields of research. Grant holders are free to choose their own fields of research and to pursue their research in the way they think best. Assessments of project proposals no longer play any role in the decision whether or not to support an applicant. The decision whether or not to support and the level of support depend solely on the*



61. Members of the C.S.I.R.'s Foundation for Research Development who are much involved with research support for museum scientists: Dr R. R. Arndt (left), Deputy-President; Mr J. A. Botha and Mr W. J. Weideman.

outcome of an evaluation of the candidate, based on his track record at the time of evaluation. In short, the underlying philosophy is that only good researchers should be supported, that whether they are good or not should be decided on their track records by means of an evaluation without any reference to any future projects they may wish to undertake, if funded, and that the level of funding should be determined by their rating as researchers; furthermore that higher ratings should imply exponential increases in the level of support.<sup>7</sup>

In order to qualify for any C.S.I.R. research support, museum scientists have therefore to submit themselves for evaluation, which is based on their own evaluation statement and the reports of referees nominated by themselves, or approached independently by the F.R.D. Following evaluation, each candidate is placed in a category on the scale A–E, with an additional Y category for young researchers. Category A and B scientists qualify for Comprehensive Support, including the provision of support staff; those in Category C qualify for Partial Support.

An extremely favourable development from the point of view of museum research is the fact that *Museum Sciences* is one of the 11 disciplines recognized by the F.R.D. in its granting system. This discipline embraces all research done at natural history museums together with some done at universities as, for instance, in palaeontology. In the first round of evaluations at the end of 1984, 53 candidates in Museum Sciences submitted themselves for evaluation. Of these, 16 qualified for Comprehensive Support, 11 for Partial Support, while 26 did not qualify for support at that stage, though many of these will certainly become eligible in the future.

In order to implement its new scheme, the F.R.D. appointed 11 Selection Committees to deal with the evaluation procedures. These committees consist of three members each who are appointed for a three-year period and then retire in rotation. The first committee for Museum Sciences consists of Dr C. K. Brain, Professor J. Meester and Dr B. R. Stuckenberg, with Dr Brain serving as the representative on the Awards Committee, and also as the SAMA representative on the F.R.D. Advisory Committee.



62. Dr B. R. Stuckenberg, Director of the Natal Museum and member of the Foundation for Research Development Selection Committee for Museum Sciences.



63. Professor J. (Waldo) Meester, Head of the Department of Biological Sciences, University of Natal, an enthusiastic supporter of museum research and member of the Foundation for Research Development Selection Committee for Museum Sciences.

Under the new F.R.D. scheme, museum-based research workers obtain vastly more financial support than they did under the previous system. Some dissatisfaction is felt in that, while established, high-ranking researchers are very generously catered for, scientists with lower ratings receive very much less. It will clearly take some time for this new system to settle down and to be fully understood.

### ETHICS FOR MUSEUM PROFESSIONALS

In 1974, *SAMAB*<sup>74</sup> carried a reprinted version of a *Code of Ethics for Museum Workers* which has been adopted by the American Association of Museums. This document begins as follows:

*'Museums, in the broadest sense, are institutions which hold their possessions in trust for mankind and for the future welfare of the race. Their value is in direct proportion to the service they render to the emotional and intellectual life of the people.'*

*The life of the museumworker, whether he be a humble laborer or responsible trustee, is essentially one of service. His conduct rests on a threefold ethical basis.*

1. *Devotion to the cause he serves.*
2. *Faith in the unselfish motives of his co-workers.*
3. *Honor based on a high sense of justice as the controlling motive of his thoughts and actions.'*

The document goes on to outline what is regarded as important in the following areas: relations of museums to the public, relations between museums, relations of the director to the trustees, relations of the director to the staff, relations of the staff to the director, and finally, relations between members of the staff.



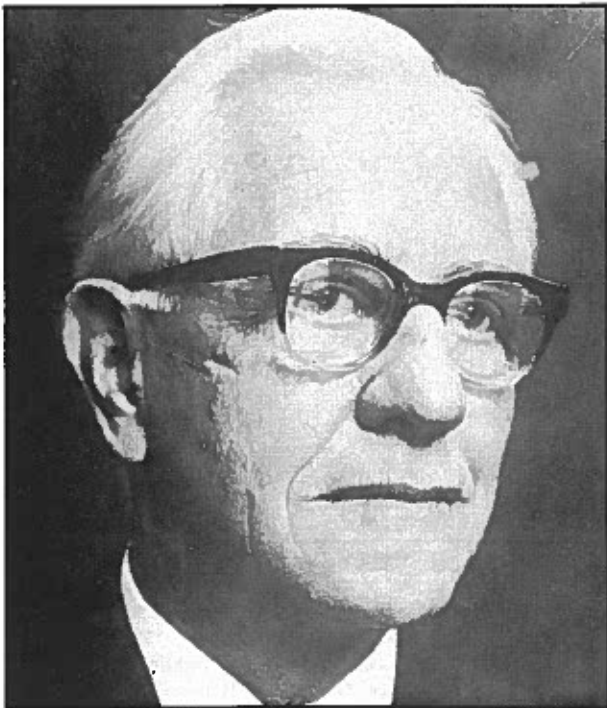
64.

Members of the Transvaal Museum Board photographed in 1979. **Seated:** Dr W. J. van Wyk, Professor F. C. Eloff (Chairman) and Professor H. L. de Waal. **Standing:** Professor L. M. Jonck, Dr J. C. Otto, Mr H. W. Schoeman, Dr G. de Graaff, Professor B. C. Jansen and Professor H. P. van der Schijff.

Professor Eloff joined the Board in 1955, 31 years ago, and has served as Chairman since 1963, a period of 23 years. Others who came onto the Board in 1963 are Professor Jonck, Professor Jansen, Professor Van der Schijff and Professor De Waal. The Transvaal Museum has benefited enormously from the dedication of its Board Members year after year.

At the request of Council, Dr Barry convened a SAMA Ethics Committee and drew up a Code of Museum Ethics appropriate to the southern African situation, based very largely on the code adopted by the Museums Association of Great Britain. It incorporated the most important recommendations of the UNESCO Convention on the ideas of prohibiting and pre-

venting the illicit import, export and transfer of ownership of cultural property, 1970 and the European Convention on the protection of archaeological heritage, which should make it internationally acceptable. Copies of this Code of Ethics were sent to all SAMA members for comment in 1978, while the final version appeared as the Code of Ethics of the Southern African Museums Association<sup>75</sup> in 1979. The Code is divided broadly into Institutional Ethics, Professional Conduct and an appendix dealing with collecting policy for biological and earth sciences.



65.

Professor S. F. Bush, former Head of the Department of Zoology at Natal University College, was appointed a member of the Natal Museum Board in 1936 and became its Chairman in 1939. He then served in this capacity for 31 years until his sudden death in 1969.

### THE CONTRIBUTION OF MUSEUM BOARDS

The affairs of most museums are watched over and regulated by Boards of Trustees, but it is not always remembered just how substantial the contributions of Board Members are, not only to the welfare of the organizations they serve, but to the museum cause in general.

For the services that Board Members render they receive no remuneration, and yet almost every museum director would be able to think of a Board Chairman or Member who has given unselfishly of his time and energy over many years. It would be impossible to mention all such cases and only three are recalled here, but the Museums Association expresses its warm gratitude to all other Members of Museum Boards whose selfless contributions are so much appreciated.

### A GUIDE TO THE MUSEUMS OF SOUTHERN AFRICA

There has long been a need for a comprehensive, well-illustrated guide to the museums of southern Africa, and the Museums Association was extremely fortunate in obtaining the services of Mr Hans



66. The East London Museum will long remember Mr G. G. Smith, who joined the Board in 1940, and was elected Chairman in 1941, a position he held for 32 years. An engineer by profession, Mr Smith threw his energies into the development of the East London Museum in collaboration with the then Director, Dr Marge Courtenay-Latimer (shown in the picture), who wrote 'one can confidently state that the success of the East London Museum was in more ways than one due to him'



67. Mr Hans Fransen, compiler of the *Guide to the Museums of Southern Africa*, was born in Amsterdam in 1931. He has worked as Curator of the Stellenbosch Museum, Curator of Groot Constantia, Assistant-Director of the South African National Gallery, and is currently Senior Lecturer in History of Art at the University of Natal.

Fransen who compiled one. The first edition, which appeared in 1969, was published in English and Afrikaans and contained information on 115 museums throughout the subcontinent. By the time that Mr Fransen's Second Edition of the *Guide*<sup>76</sup> appeared in 1978, the number of museums listed had increased by over 100, reflecting not only the rapid



68. The Committee of Heads of Cultural Organizations, photographed at the National Museum, Bloemfontein, in 1985. **Front row:** Mrs J. du Toit, Afrikaanse Taalmuseum; Mrs B. Paap, William Fehr Collection; Dr B. Cronje, National Cultural History and Open-air Museum (Chairman 1984/5); Dr J. J. Oberholzer, National Museum (Chairman 1985); Mrs R. Holloway, William Humphreys Art Museum; Mr A. Roux, South African Cultural History Museum. **Middle row:** Dr M. Bruton, J. L. B. Smith Institute for Ichthyology; Dr C. K. Brain, Transvaal Museum; Dr C. Eloff, National Botanical Gardens; Dr I. Pols, Voortrekker Museum; Col. G. R. Duxbury, South African National Museum for Military History; Dr B. R. Stuckenberg, Natal Museum; Mr P. Westra, South African Library; Prof. A. de Villiers, National English Literature Museum. **Back row:** Dr E. Malherbe, Foundation for Education, Science and Technology; Mr P. Delpont, Oorlogsmuseum van die Boererepublieke; Dr R. H. van Niekerk, South African National Gallery; Mr J. C. Haak, Michaelis Collection; Mr P. Lor, State Library; Dr M. J. Cluver, South African Museum; and Mr N. J. Snyman, Library for the Blind.

creation of new museums, but also the more complete documentation of existing ones.

## TWO RELATED COMMITTEES

### The Committee of Heads of Cultural (Declared) Organizations

Although this Committee is not formally linked to SAMA, it is made up of the Directors of the State-aided museums and related institutions, and it functions officially in terms of the Museums Act. For many years it has been customary for the Committee to meet simultaneously with the SAMA annual conferences. In fact, its first meeting was convened at

the initiative of Dr A. C. Hoffman when the Association met in Pietermaritzburg in 1955.

### National Advisory Committee for Museums

As a result of a recommendation of the Niemand Commission into the Co-ordination of Museums at National Level, tabled in 1975, the National Advisory Committee on Museums was formed in 1981 to advise the Minister of National Education on the development of museum services. SAMA has been formally represented on this Committee by Dr J. J. Oberholzer, who has from time to time reported on the committee's activities.<sup>77-79</sup>



69.

The National Advisory Committee for Museums, photographed at the Department of National Education in 1965. **Seated:** Professor P. J. Nienaber, Orange Free State Administration; Mrs E. B. Nagelgast, Africana Museum; Mr J. J. H. Booyen, National Education (Chairman); Miss H. Schirge, Secretariat. **Standing:** Mr J. J. D. Uys, Treasury; Mr E. Nieuwoud, Treasury; Dr C. J. Loedolf, National Monuments Council; Mr D. H. J. Weideman, National Education; Dr J. J. Oberholzer, SAMA representative; Dr V. J. Krohn, National Education; Professor P. G. Nel, Pretoria University; Mr W. O. Morsbach, Cape Provincial Administration; Mr C. J. Fourie, Natal Provincial Administration; Mr H. le Roux, Secretariat; and Dr C. K. Brain, Heads of Cultural Organizations.

# What Of SAMA's Future?

## ASSESSING SAMA's STRENGTHS AND WEAKNESSES

From time to time, during SAMA's fifty years of existence, members have taken stock of the Association's performance and have assessed its strengths and weaknesses. In his 1944 Presidential Address,<sup>22</sup> Mr E. C. Chubb considered the first eight years of the Association's existence and concluded that, by way of its two principal activities, the holding of annual meetings and the publication of its quarterly bulletin, the Association had served many useful purposes. It had bridged the distance separating individual museum staffs, and had promoted a spirit of co-operation. It had provided opportunities for discussing matters of mutual interest, while the practice of holding annual meetings in different towns each year has enabled delegates to become acquainted with other museums. The meetings have, in turn, been a source of encouragement and inspiration to the local institutions.

These advantages, already apparent in 1944, have continued to accrue to the southern African museum community in the intervening years with gratifying results.

In his assessment of the first 25 years of the Association,<sup>43</sup> Dr P. A. Clancey made a plea that more attention should be given to the SAMA training schemes and that the Diploma and Technical Certificate should receive official recognition as evidence of qualification in the museum professions. As discussed elsewhere (see Training for the Museum Professions), the SAMA Education Committee is continually active in this field.

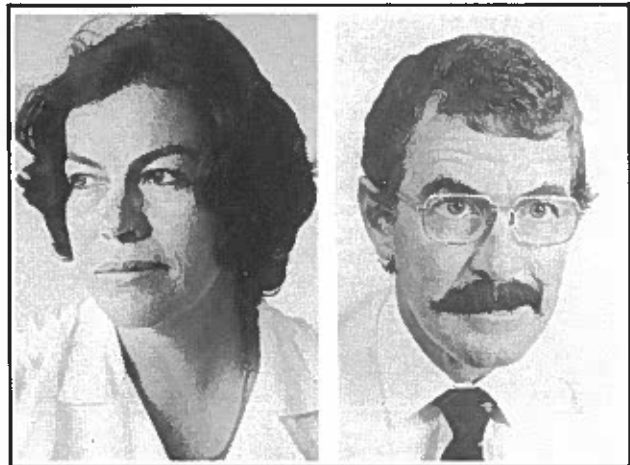
A very real weakness of the Association, as its current functions however, has been remarked upon by Dr R. L. Liversidge and Miss R. M. Tietz,<sup>3,60</sup> as well as more recently by Dr J. J. Oberholzer.<sup>60</sup> It concerns the fact that, although the annual conferences are successful and productive, the activities of the Association come to a virtual stop between these meetings, with the result that ordinary members get very little from SAMA, except for their copies of the quarterly bulletin. Furthermore, Dr Oberholzer pointed out that *'the annual conference has no feed-back mechanism and is only attended by 30 percent of the total membership figure'*. He then made a plea that the Association should be organized more strongly on a regional basis. He proposed that full-scale, international SAMA conferences should be held every second year, so that the intervening years could be occupied with regional activities, in which large numbers of SAMA members could participate informally, freely and at little cost.

It seems very likely that the future vitality of the Association will depend heavily on successful

regional activities. As mentioned elsewhere, three SAMA Regional Groups are now in existence and others are likely to begin shortly. Their independent activity is certainly to be encouraged, provided this remains integrated, perhaps by Council representation, within the broad framework of SAMA policy.

More recently, a rather different kind of analysis of SAMA's performance has been launched. During September 1985, a number of SAMA members attended a Strategic Awareness Planning Seminar, organized by the Gencor Development Fund, of which Miss C. C. van Zyl, a former SAMA Honorary Secretary, is now the Manager. The Seminar was held at the Magaliesberg Training Centre under the supervision of the firm Louw du Toit and Associate. As an exercise, delegates to this course analysed the organizational strengths and weaknesses of the museums they represented.

As a result of this it was suggested by Miss Nancy Tietz, who had attended the seminar, that a similar analysis could profitably be made of the Southern African Museums Association. The suggestion was taken up in October 1985 by Mr Brian Wilmot, Director of the Albany Museum, and he convened a meeting in Pretoria where the "cross-impact analysis" was undertaken. Present at this meeting, which was hosted by Mr Johan du Toit of the Post Office Museum, were: Mr B. C. Wilmot, Convenor, Miss R. M. Tietz, Mrs M. C. Erasmus, Mr U. Küsel, Mr C. Till and Mr J. du Toit. The results and recommendations of this interesting exercise are to be presented at the SAMA 50 Conference in Kimberley during 1986, and are awaited with anticipation.



70.

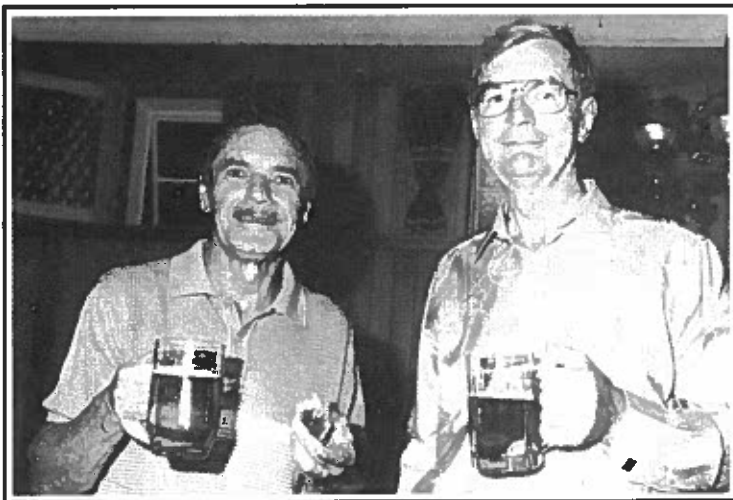
The two prime-movers behind a systematic analysis of SAMA's strengths and weaknesses: Miss Nancy Tietz and Mr Brian Wilmot. Their recommendations will be presented at the SAMA 50 Conference in Kimberley.

# A Lighter Side of Museology: Conviviality and Pleasure

SAMA conferences and excursions provide many opportunities for social activity, pleasure and relaxation. On such occasions friendships are made and renewed and topics of mutual museum interest

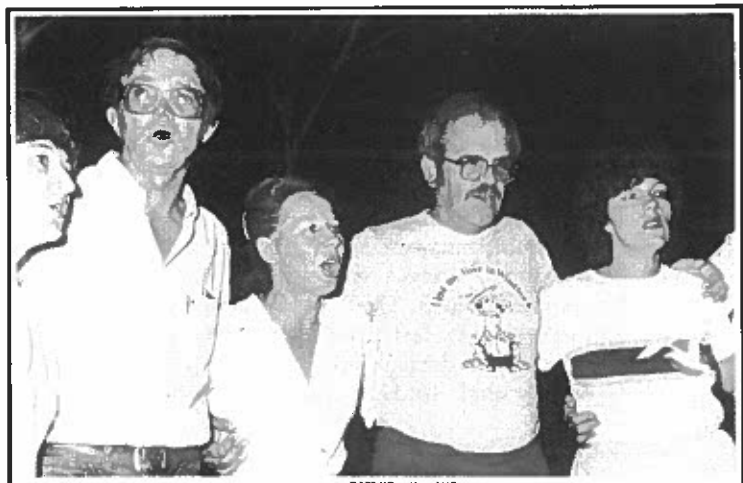
are discussed long after the formal sessions have ended. It is probably true to say that it is during the informal gatherings that a sense of belonging in a community of museum enthusiasts is generated.

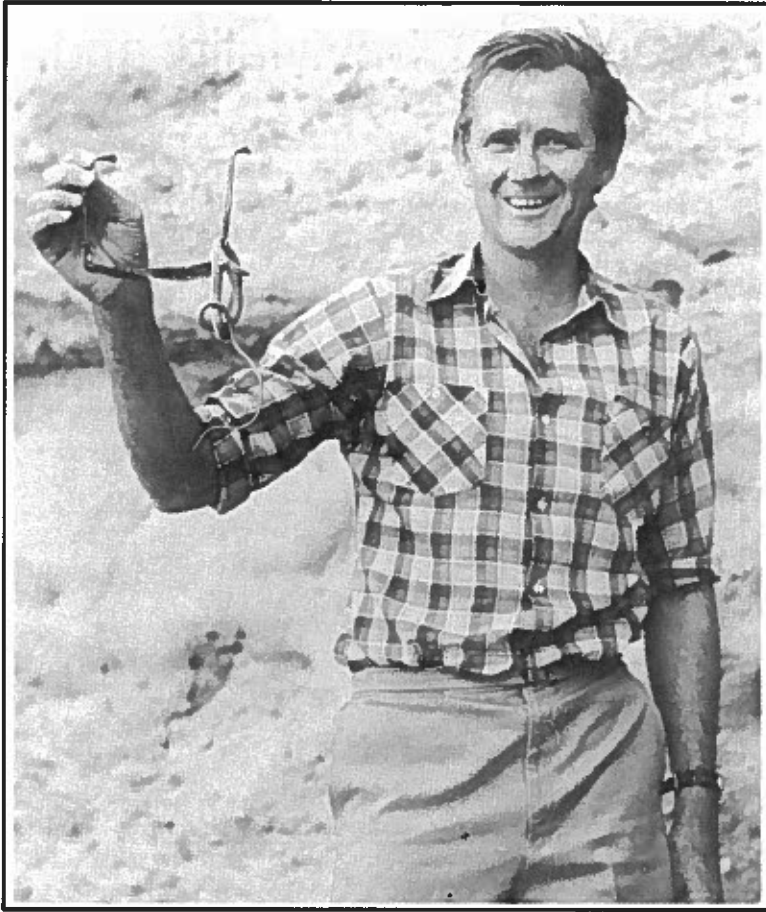
71.  
Miss R. M. Andrade, representative of the Swaziland National Museum, in conversation with Mrs Laura Brain at the 1985 SAMA conference in Grahams-town.



72.  
Enjoying the beer for which Windhoek is rightly renowned: Dr Tom Barry and Col. George Duxbury in April 1983.

73.  
A campfire sing-song on a SAMA excursion to the Naukluft Mountains of S.W.A./Namibia in 1983. The museologist who "lost his liver in Windhoek" is Dr Hannes Oberholzer.





74.  
Dr John Wallace with a friendly Namib sand snake that made his acquaintance on a SAMA excursion to Sesriem Canyon in 1983.

## This Curious Profession

An anecdote of Dr Leonard Gill, recalled by Dr Reay Smithers:<sup>81</sup>

*'Dr Leonard Gill was Director of the South African Museum when I joined the staff. He was a bachelor, shy and retiring in his ways, who lived with his sister in a small flat near the Museum . . . The police rang him up one day and said they had in custody, for soliciting, a very fine figure of a bushman woman. She was, in fact, a Hottentot/Bushman hybrid of an extraordinary yellow colour. I drove Gill and Drury, the taxidermist, who was then preparing casts of Bushmen, to Roeland Street to view her. Drury was enthusiastic so Gill asked the Inspector if it would be right and proper for her to receive some recompense for her trouble, suggesting the sum of 10/-. This was put to her through the interpreter and, to put it mildly, she blew her top. When the tirade quietened down the Inspector asked the interpreter what she had said to which he replied, drawing himself to attention, "Sir, she says not with that white-haired old bastard for only 10/- when she can get £2 a time from any sailor in Buitenkant street". Gill was prone to blushing, and that day he was pink from the neck up, but she got her £2 and her cast can be seen in the Gallery today.'*

An incident in the life of Dr George Arnold, former Director of National Museum of Rhodesia, remembered:

Dr Arnold answered the museum telephone and found himself in conversation with a very agitated woman. She said she had just seen a snake and must please have some information about it. Dr Arnold asked for details and she replied: 'It was long and brown and moved very fast across the backyard—please tell me what kind of snake it was.' Dr Arnold took a deep breath. 'Madam' he said 'my initials are G. A., and those stand for George Arnold, not God Almighty. Good day'.

## A Last Word

From Past-President Professor R. H. Compton<sup>27</sup>

*'We love our work, we bear with its frustrations and inconveniences, and we do not grumble overmuch about the parsimony, official and general with which we are treated. We are not on the whole business men, nor are we advertisers—in fact we feel that advertisement is infra dignitate. Besides, we have no time for it; we are too busy writing our annual reports or worrying over unemployment insurance returns. And so the world goes by with scarcely a passing glance, fortunes are made—but not for us—and all manner of things are sold to the public—but not our wares.*

*If this Association can do something substantial towards improving the status of the museums, increasing their output of scientific work and their educational influence, making them proud features of the towns which are fortunate enough to possess them and of the country whose marvels they interpret, then it will be carrying out its principal functions: and this is the work in which all of us should co-operate and in which we should speak with a united voice.*

*Many of us have a streak of puritanism in our nature, so that we subconsciously regard what is pleasant as being unimportant; real work is considered to be essentially unpleasant, and we perhaps do not realize that our work, because it is full of enjoyment, is at the same time of extreme value. In a materialistic world, obsessed with getting and spending, the study and interpretation of nature are among the things which keep men sane, and in a very true sense religious. Man does not live by bread alone, and our museums and kindred institutions can make most valuable additions to his diet. Let us, therefore, cultivate our garden—and let us seek and obtain every possible assistance in doing so.'*

## ACKNOWLEDGEMENTS

We would like to thank our many friends and colleagues in museums throughout the country who have helped us so willingly and we are also grateful for the encouragement of the Chairman and Board of the Transvaal Museum.

Our special thanks go to Miss Margaret Shaw, Dr Erich Bigalke, Mrs Elizabeth Voigt, Miss Nancy Tietz and Miss Lelong Immelman. The diagrams for this publication were kindly drawn by Dr Ginny Brain; the text was expertly typed on the word-processor by Miss Theresa Clutty while invaluable assistance with editorial and printing matters was given by Dr Nico Dippenaar.

### Picture credits

Grateful acknowledgement is made to the sources of the photographs used in this publication:

The Africana Museum, Johannesburg, 19; Godfrey Argent, London, 1; The Argus, Cape Town, 20; Mr D. Brill, 33; Durban Museum, 17; East London Museum, 4, 5, 9, 11, 13, 15, 22, 25, 34, 66; Mr H. Fransen, 67; Professor G. H. Findlay, 18; Professor J. R. Grindley, 36; Henry Ford Museum, Dearborn, Michigan, 37; McGregor Museum, Kimberley, 6; Natal Museum, 62, 65; National Museum, Bloemfontein, 68; National Museum of Malawi, 46; National Zoological Gardens, 27; S.A. Archaeological Society, 10; SAMAB, 14; South African Museum, 30, 31; South African National Gallery, 20, 35; Mr N. Schaefer, 57; Miss R. M. Tietz, 70; Transvaal Museum, 8, 12, 16; Dr R. van Aarde, 21; Die Volksblad, Bloemfontein, 26; Mr B. C. Wilmot, 70; Mr G. Winchester-Gould, 28. All other photographs are by C. K. Brain.

### LITERATURE CITED

- Tietz, R. M. 1985. Collections – past of our national heritage. *SAMAB* 16(6): 297–302.
- Parr, A. E. 1960. Is there a museum profession? *Curator* 3(2): 101–106.
- Liversidge, R. and Tietz, R. M. 1974. Is there a museum profession? *SAMAB* 11(5): 187–191.
- Parr, A. E. 1964. A plurality of professions. *Curator* 7(4): 287–295.
- Fransen H. 1978. *Guide to the Museums of Southern Africa*. Cape Town: Southern African Museums Association.
- Miers, H. A. 1928. *Report on Public Museums of the British Isles*. Dunfermline: Carnegie United Kingdom Trust.
- 3 April 1935, *Circular from the Secretary for the Interior, Union of South Africa, to all Museums and Art Galleries in the Union*. On file at the Transvaal Museum, pp. 1–2.
1935. *Draft Constitution of proposed South African Museums Association*. On file at the Transvaal Museum, pp. 1–2.
- 13 February 1936. Letter from Mr P. J. Hogenhout, Secretary for the Interior, to the Director of the Transvaal Museum. On file at the Transvaal Museum.
- Chubb, E. C. 1936. The advantages of forming a South African Museums Association. *SAMAB* 1(1): 2–5.
- Minutes of a meeting of representatives of museums and art galleries held in the Public Library, Kimberley, on 23 April 1936, at 10 a.m. On file at the Transvaal Museum.
- Gill, E. L. 1936. *A First Guide to South African Birds*. Cape Town: Maskew Miller.
- Pinhey, E. 1963. Dr G. Arnold O.B.E. *Nature* 199(4892): 429–430.
- Van Hoepen, E. C. N. 1941. Presidential Address. The Bushman and his culture. *SAMAB* 2(9): 217–221.
- Maingard, L. F. 1942. Presidential Address. the Museu Alvaro de Castro, Lourenco Marques. *SAMAB* 2(14): 341–346.
- Kirby, P. R. 1943. Presidential Address. South African native drums, particularly the great Ngoma of the Venda. *SAMAB* 3(2): 42–48.
- Kirby, P. R. 1950. Presidential Address. Musical archives. *SAMAB* 4(13): 384–390.
- Kirby, P. R. 1953. Presidential Address. Science, art and the nation. *SAMAB* 5(9): 232–237.
- Kirby, P. R. 1958. Presidential Address. Military music through the ages. *SAMAB* 6(15): 393–403.
- Kirby, P. R. 1964. Presidential Address. The migration of races as demonstrated by their musical spoor. *SAMAB* 8(4): 105–109.
- Chubb, E. C. A letter addressed to Mr C. M. F. Swierstra, dated 2 April 1936, on file at the Transvaal Museum.
- Chubb, E. C. 1944. Presidential Address. The first eight years of the South African Museums Association's existence. *SAMAB* 3(6): 157–164.
- Roberts, A. 1940. *The Birds of South Africa*. Johannesburg: Central News Agency.
- Roberts, A. 1951. *The Mammals of South Africa*. Johannesburg: The Mammals of South Africa Book Fund.
- Roberts, A. 1945. Presidential Address. Museums and biological research *SAMAB*: 286–292.
- Compton, R. H. 1946. Presidential Address. Preservation, conservation, education. *SAMAB* 3(14): 405–413.
- Compton, R. H. 1949. Presidential Address. The Pleasures and pains of systematics. *SAMAB* 6(9): 243–254.
- Van der Horst, C. J. 1947. Presidential Address. The limitations of classification. *SAMAB* 4(3): 56–62.
- Anon, 1951. Prof. C. J. van der Horst. *Nature* (London) 168: 1103.
- Findlay, G. H. 1983. C. J. van der Horst (1889–1951) and the Amsterdam biologists of the 1920s. *South African Journal of Science* 79: 49–51.
- Smith, A. H. 1978. R. F. Kennedy 1897–1978. *Africana Notes and News* 13(4): 129–130.
- Kennedy, R. F. 1948. Presidential Address. Utopia round the corner. *SAMAB* 4(6): 148–155.
- Paris, J. 1951. Presidential Address. The art museum and the community. *SAMAB* 5(1): 5–12.
- Smithers, R. H. N. 1952. Presidential Address. Museums and public relations. *SAMAB* 5(5): 122–130.
- Smithers, R. H. N. 1963. Presidential Address. Planning for the future. *SAMAB* 7(16): 386–397.
- Pringle, J. A. 1954. The Director, his duties, responsibilities and obligations. *SAMAB* 5(13): 335–338.
- Lawrence, R. F. 1969. V. F. FitzSimons. A biographical appreciation. *Scientific Papers of the Namib Desert Research Station* 37: 1–4.
- FitzSimons, V. F. M. 1962. *The Snakes of Southern Africa*. London: Purnell and Sons.
- Hoffman, A. C. 1957. Presidential Address. The influence of pictures on Mankind. *SAMAB* 6(10): 252–256.
- Meiring, A. J. D. Presidential Address. Museums in South West Africa. *SAMAB* 7(1): 11–17.
- Bigalke, R. C. Presidential Address. Museums and publicity. *SAMAB* 7(5): 100–104.
- Clancey, P. A. 1985. *The Rare Birds of Southern Africa*. Johannesburg: Winchester Press.
- Clancey, P. A. 1961. Presidential Address. The first twenty-five years – and the future. *SAMAB* 7(9): 200–208.
- Tobias, P. V. 1982. *Man, the Tottering Biped, the Evolution of his Posture, Poise and Skull*. Kensington: University of New South Wales.
- Dart, R. A. 1962. Presidential Address. The functions of museums. *SAMAB* 7(13): 302–311.
- Cluver, M. A. 1985. Obituary: Dr T. H. Barry. *SAMAB* 16(5): 209–211.
- Barry, T. H. 1965. Presidential Address. The Brain-drain and its effects on South African museums. *SAMAB* 8: 178–185.
- Barry, T. H. 1966. Presidential Address. Portuguese contribution to the exploration and development of southern Africa. *SAMAB* 8(10): 323–332.
- Barry, T. H. 1967. Presidential Address. Looking ahead. *SAMAB* 8(13): 403–413.
- Barry, T. H. 1974. Presidential Address. Dig that fossil. Unpublished.
- Barry, T. H. 1975. Presidential Address. 150 years – an assessment. *SAMAB* 11(7): 249–260.

52. Duxbury, G. R. 1968. Presidential Address. David and Goliath - 1881. *SAMAB* 9(3): 35-50.
53. Duxbury, G. R. 1969. Presidential Address. The Battle of Magersfontein (11th December, 1899) - was it all necessary? *SAMAB* 9(7): 213-230.
54. Brain, C. K. 1981. *The Hunters or the Hunted? An Introduction to African Cave Taphonomy*. Chicago and London: Chicago University Press.
55. Brain, C. K. 1982. Naturalist. In: N. Helme (Editor): *Irene Personalities*. Pretoria: Nigel Helme Publications.
56. Van Niekerk, R. H. 1982. Obituary: Prof. Matthys Bokhorst. *SAMAB* 15(3): 140.
57. Shaw, E. M. 1978. Presidential Address. Ethnology in southern African museums. *SAMAB* 13(2): 1-17.
58. Shaw, E. M. 1979. Presidential Address. ICOM resolutions and activities during the past five years. *SAMAB* 13(6): 185-200.
59. Oberholzer, J. J. 1980. Presidensiële Rede. Navorsingswerk in museums. *SAMAB* 14(3): 73-90.
60. Oberholzer, J. J. 1981. Presidential Address. Towards the Nineties. *SAMAB* 14(7): 257-266.
61. Le Roux, M. J. 1981. *The Cape Copper-Smith*. Stellenbosch Museum.
62. Van Niekerk, R. H. 1982. Presidential Address. *SAMAB* 15(3): 101-108.
63. Hölscher, M. 1985. Museum Library Group Editorial. *Newsletter of the SAMA Museum Library Group* 1(1): i.
64. The Technical Certificate award of the South African Museums Association. A summary of regulations. *SAMAB* 7(5): 138.
65. Southern African Museums Association. Technical Certificate. *SAMAB* 12(2/3): 67-88.
66. Southern African Museums Association Education Committee. Technical Certificate. *SAMAB* 15(4). Loose insert pp. 1-22.
67. Inskip, A. 1971. An annotated bibliography for museum technical officers. *SAMAB* 9(17): 609-688.
68. Voigt, E. A. 1983. Staffing structure and training requirements in South African museums. *SAMAB* 15(8): 329-350.
69. Booyens, B. 1978. Nagraadse Professionele Diploma in Museumkunde van die Universiteit van Stellenbosch. *SAMAB* 13(4): 127-129.
70. Penrith, M.-L. 1973. Computer Group meeting, October 1973. *SAMAB* 10(8): 334-336.
71. Barry, T. H., Summers, R. F. H. and Shaw, E. M. 1973. Museum accreditation. *SAMAB* 10(6): 233-240.
72. Barry, T. H., Shaw, E. M. and Summers, R. F. H. 1983. Accreditation after 12 years. *SAMAB* 15(8): 357-368.
73. 1985. C.S.I.R. Foundation for Research Development. Report of the Main Research Support Programme. South African National Scientific Programmes Report No. 101E.
74. 1974. Code of Ethics for museum workers. *SAMAB* 11(5): 161-166.
75. Code of Ethics of the Southern African Museums Association. Compiled by the Ethics Committee (Chairman Dr T. H. Barry) of the Southern African Museums Association. 1 June 1979.
76. Franssen, H. 1978. *A Guide to the Museums of Southern Africa*. Cape Town: Southern African Museum Association.
77. Oberholzer, J. J. 1983. Report on the National Advisory Committee for Museums. *SAMAB* 15(7): 287-288.
78. Oberholzer, J. J. 1984. Report on the National Advisory Committee for Museums. *SAMAB* 16(3): 105-106.
79. Oberholzer, J. J. 1985. Report on the National Advisory Committee for Museums. *SAMAB* 16(7): 323-324.
80. Liversidge, R. L. 1971. The South African Museums Association. An evaluation. *SAMAB* 9(15): 558-559.
81. Smithers, R. H. N. Recollections of some great naturalists. *Transvaal Museum Bulletin* No. 20: 5-15.

## MEMBERSHIP OF SAMA

### CORPORATE

Anglovaal Ltd  
 Barclays National Bank Ltd  
 Caltex Oil (SA) (Pty) Ltd  
 Gencor Development Fund  
 Goodyear Tyre and Rubber Co. (SA) (Pty) Ltd  
 Mobil Oil SA (Pty) Ltd  
 Old Mutual  
 Rembrandt Tobacco Corp  
 Rustica Press  
 Santamversekering Bpk  
 Shamrock Paints (Pty) Ltd  
 Shell SA (Pty) Ltd  
 Southern Life Association  
 Standard Bank Investment Corporation Ltd  
 The Nedbank Group  
 Volkswagen of South Africa (Pty) Ltd

### HONORARY LIFE

Dr M. C. Courtenay-Latimer  
 Dr J. A. Pringle  
 Dr R. H. N. Smithers  
 Mr R. F. H. Summers  
 Miss E. M. Shaw

### LIFE

Dr E. H. Bigalke  
 Prof. R. A. Dart  
 Miss H. F. L. Immelman  
 Dr D. Kroon  
 Mrs E. B. Nagelgast  
 Mr J. P. Roux  
 Mr P. Swanepoel  
 Miss R. M. Tietz

### ORDINARY

Addleson Miss E. S. J.  
 Ainslie Ms J. A.  
 Alexander Miss L.  
 Angus Mrs B.  
 Arnott Ms L. D.  
 Aukema Mrs E. W.  
 Avery Dr D. M.  
 Avery Mr G.  
 Balkema Mr A. A.  
 Balkwill Mr G.  
 Barbour Miss F. M.  
 Barnard Mr F. W. H.  
 Bartmann Mr J. F. T.  
 Basson Mr J. J.  
 Bedford Ms E.  
 Bazzard Mrs A.  
 Bekker Mrs C. J.  
 Bell-Cross Mr G.  
 Bennie Mrs J. S.  
 Beresford Mr F.  
 Bevis Mr A. L.  
 Biesman-Simons Mrs K. W.  
 Biggs Mrs E. M.  
 Blaeske Mrs G.  
 Bompas Mr J. F. G.  
 Boot Mr F. H.  
 Booth Mr C.  
 Bornman Mrs A. R.  
 Bornmann Miss I.  
 Botha Mrs R.  
 Bradlow Dr F. R.  
 Brain Dr C. K.  
 Brand Mrs M. M.  
 Brothers Prof. D. J.  
 Brown Miss A. J. V.  
 Brown Mr P.

Bruce Mrs H.  
 Brunke Mrs I. E.  
 Bruton Dr M. N.  
 Bubb Miss L.  
 Burger, Mr P. J. T.  
 Buys Mr P. I.

Carman Mrs J.  
 Cartwright Ms L.  
 Cartwright Miss M. F.  
 Charlton Mrs B.  
 Chesselet Mrs I. M.  
 Christian Mrs K. S.  
 Clark Prof. J. D.  
 Clutty Miss H. T. M.  
 Cluver Dr M. A.  
 Cochrane Mr C.  
 Coetser Mr S.  
 Coetzee Mr C. G.  
 Coetzee Mrs I.  
 Coffee Mr J. A.  
 Cory Mrs A.  
 Crean Miss A. C.

Davies Mrs A.  
 Davis Mr G. H.  
 Davison Mrs P.  
 De Beer Miss S.  
 De Villiers Mrs K. L.  
 Delport Mr P. J.  
 Dickson Mr C. G. C.  
 Dixon Mr J. E. W.  
 Dolby Mr J. R.  
 Du Pisani Mr E.  
 Du Preez Miss H. M. J.  
 Du Toit Mr J. J.  
 Du Toit Mrs H. E.  
 Duxbury Col. G. R.  
 Duxbury Mrs U. M.

Eastwood Mrs S.  
 Engelbrecht Dr C. M.  
 Engelbrecht Miss C. W.  
 Engelbrecht Miss G.  
 Erasmus Mrs M. C.

Faranisi Mr O. M.  
 Farquharson Mr F. L.  
 Ferguson Miss F. L.  
 Findlay Mr Dick  
 Fock Mrs D.  
 Fock Dr G. J.  
 Fourie Mr C. J.  
 Fourie Mr C. J. I.  
 Fourie Mrs S.  
 Fransen Mr H.  
 Fouché, Mr M.

Gaisford Mr A. J.  
 Gates Ms G. C.  
 Gertenbach Miss D. M. P.  
 Gie Mrs M.  
 Goetz Mr R.  
 Gould Ms P.  
 Grindley Prof. J. R.  
 Grobler Mrs E.

Haigh Mrs E. H.  
 Hall Dr A.  
 Hanisch Mr E. O. M.  
 Harper Miss V. A.  
 Haselau Mr I. R.  
 Hayden Mr E.  
 Hendey Dr Q. B.  
 Hewitt Miss J.  
 Holleman Mr W.  
 Holliday Mr C.

Holloway Mrs R. J.  
 Hölscher Ms M.  
 Hooper Miss H. L.  
 Hörstmann Mrs A.  
 Hosford Mrs J.  
 Hulley Dr P. A.  
 Humphreys Dr A. J. B.  
 Huysaman Mr G. F.

Jackson Mr H. D.  
 Jacobson Mr L.  
 Jessnitz Mr E. P.  
 Jones Mrs G. Rheinallt  
 Jones Mr G. H.  
 Joubert Miss K.  
 Joubert Mr W. S.

Kannemeyer Mr S. X.  
 Keene Mr J. L.  
 Keene Mrs R.  
 Kennedy Miss L.  
 Kensley Dr B. F.  
 Kitching Mr C. J. M.  
 Klinghardt Mr G.  
 Kloppenborg Miss J. P.  
 Knoetze Mr R. J.  
 Kohler Mr E. V. N.  
 Kok Dr H. M.  
 Korb Mrs J. A.  
 Kramer Mr J. B.  
 Küsel Mr U.

Laishley Miss K. M.  
 Lawton Mrs A. C.  
 Lefrange Mrs J. A.  
 Le Roux Miss H. I.  
 Le Roux Mr M. J.  
 Liebenberg Mr J. A.  
 Liebenberg Mrs M. C. J.  
 Lighton Mr J.  
 Liversidge Dr R.  
 Lock Mr P. G.  
 Loedolff Dr C. J.  
 Londt Dr J. G. H.  
 Louw Miss A. E.  
 Louw Mr S. v.d. M.  
 Louw Mr W. J.  
 Lynch Dr C. D.

Mackie-Niven Dr C. K.  
 Maggs Dr T. M. O'C  
 Malan Col. A. F.  
 Malan Mr F. J.  
 Malherbe Mr W. D.  
 Manyatshe Mr B. R.  
 McClelland Mrs L.  
 McGregor Col. P. M. J.  
 McLachlan Dr G. R.  
 Meester Dr J. A. J.  
 Meltzer Miss L.  
 Mills Mr E. A. C.  
 Möller Mr J. D.  
 Monick Dr S.  
 Moon Mrs P. J.  
 Moore Mr P. J.  
 Myburgh Mr J.

Nash Mrs N. D.  
 Naudé, Mrs H.  
 Neethling Mrs E.  
 Nonqane Mr C. B.  
 Nott Mrs E.

Oberholzer Dr J. J.

Paap Mrs E. J.  
 Palmer Mrs H. M.

Palmer Mr H. R.  
Palmer Mrs M. F. F.  
Panagos Mr D. C.  
Pasqua Mr G.  
Payne Mrs M. K.  
Penrith Dr M.-L.  
Pereira Mr A. R.  
Pienaar Mrs F. C.  
Pistorius Mr J. C. C.  
Pitman Ms D. J.  
Port Mr A. F.  
Pretorius Dr J. C.  
Pretorius Mr P. J.  
Prinsloo Dr F. R.

Quinton Mrs R. J.

Raath Prof. M. A.  
Rau Mr R.  
Raubenheimer Mr L.  
Rautenbach Dr I. L.  
Retief Miss E.  
Reyneke Mrs T. J.  
Reynolds Dr B.  
Rial Mrs K.  
Robinson Miss C. M.  
Roeleveld Miss M. A.  
Roodt Mr F.  
Ross Dr G. J. B.  
Ross-Jones Mr L.  
Ross-Watt Mrs C. C.  
Ross-Watt Mr D.  
Roux Mr A. P.

Salinger Ms T.  
Schaefer Mr D.  
Schaefer Mr N.  
Schoonraad Prof. M.  
Schulze Miss M. E.  
Schulze Mrs M. M.  
Scott Ms P. E.  
Sierts Mr W. M.  
Slabbert Mrs L.  
Slotegraaf Miss B.  
Smit Mr J. A. L.  
Smith Dr A. H.  
Smith Mrs C.  
Smith Mr D.  
Smith Mrs G. J.  
Smith Prof. M. M.  
Stevens Mr B. C.  
Strutt Mrs D. H.  
Steel Mr R. H.  
Stuckenberg Dr B. R.  
Sturgeon Mrs O. M.  
Summers Miss H. A.

Talbot Dr F. H.  
Tempest Mr P. F.  
Theiler Dr G.  
Thompson Mrs C. J.  
Thompson Miss K. E.  
Thornton Dr R. H.  
Till Mr C. M.  
Till Mrs E.  
Timoney Mr T. W.  
Tobias Prof. P. V.  
Townsend Mr R. W.  
Trehaven Mrs R. J. A.  
Turkstra Miss H.  
Turner Miss T. P.

Untiedt Mrs M.

Van Blommestein Mrs B. A.  
Van Blommestein Ms M.  
Van Delen Miss W.  
Van der Walt Ms M. M.  
Van Driel Mrs D.  
Van Eeden Mrs A. H.

Van Ewyk Mr J. F.  
Van Hamburg Mr D.  
Van Niekerk Mr S. C. J.  
Van Niekerk Mrs F.  
Van Niekerk Dr R. H.  
Van Rooyen Ms J. C.  
Van Schalkwyk Mr J.  
Van Veelen Mr J.  
Van Vuuren Mr C. J.  
Van Vuuren Miss H. A. J.  
Van Winkel Mr K.  
Van Zyl Miss C. C.  
Van Zyl Mrs F.  
Van Zyl Mrs P. A.  
Vári Dr L.  
Venter Mr A. W. B.  
Venter Mrs M. M.  
Vernon Mrs G. N.  
Viljoen Miss E. L.  
Vivier Mr W. G. H.  
Voigt Mrs E. A.  
Von Schumann Mr G. E.  
Vorster Miss A. S.  
Vorster Ms M.

Wallace Dr J. H.  
Walters Mrs N.  
Wanless Mrs A.  
Watson Mr B. W.  
Watson Mr E. J.  
Wessels Miss E. M.  
Wessels Miss H. L.  
Weyers Mrs E.  
Wheeler Mrs K. M.  
White Miss R. E.  
Whitehead Mrs S. I.  
Whitehead Dr V. B.  
Williamson Mr F. J.  
Wilmot Mr B.  
Wilson Mr M. L.  
Winckler Dr W. G.  
Wingate Mr L. R.  
Winterbottom Dr J. M.  
Winters Miss Y. E.  
Wirth Mr H. H.  
Wisniewski Mr R.  
Wisznicka-Pinto Pereira Mrs Z.

Young Mr N. C.

#### INSTITUTIONAL

A. B. Eksteen Museum, Pretoria  
Adler Museum of the History of Medicine,  
Johannesburg  
Africana Museum, Johannesburg  
Afrikaanse Taalmuseum, Paarl  
The Albany Museum, Grahamstown  
Ann Bryant Gallery, East London  
Arend Dieperink Museum, Potgietersrus  
BP Southern Africa, Cape Town  
Barkly Oos Museum, Barkly Oos  
Bathurst Agricultural Museum, Grahamstown  
Beaufort West Museum, Beaufort West  
Bethlehem Municipality, Bethlehem  
Boksburg Town Council, Boksburg  
Boksburg Museum and Cultural Study  
Centre, Boksburg North  
Burgersdorp Cultural History Museum,  
Burgersdorp  
Caledon Museum, Caledon  
Calvinia Museum, Calvinia  
Cango Caves, Oudtshoorn  
Cape Technikon, Cape Town  
Colesberg Historical Society, Colesberg  
C. P. Nel Museum, Oudtshoorn  
Department of Health and Welfare, Pre-  
toria

Department of Nature and Environ-  
mental Conservation, Cape Town  
Drosdy Museum, Swellendam  
Durban Military Collection, Durban  
Durban Museum, Durban  
Durban Art Gallery, Durban  
East London Museum, East London  
Elgin Apple Museum, Elgin  
Fort Beaufort Historical Museum, Fort  
Beaufort  
Fred Turner Museum, Loeriesfontein  
Friends of the SA Cultural History  
Museum, Claremont  
Genootskap vir Afrikaanse Volkekunde,  
Linden  
Geological Survey, Pretoria  
George Museum, George  
Gold Mine Museum, Crown Mines  
Graaff Reinet Museum, Graaff Reinet  
Great Fish River Museum, Cradock  
Greytown Museum, Greytown  
Hendrina Town Council, Hendrina  
The Historical Society of Cape Town,  
Cape Town  
The Historical Society of Port Elizabeth,  
Port Elizabeth  
Hout Bay Museum, Hout Bay  
Hugenote-Gedenkmuseum, Franschhoek  
Human Sciences Research Council,  
Centre for S.A. Art and Architecture  
and Centre for S.A. Theatre, Pretoria  
Irma Stern Museum, Cape Town  
Isacor Museum, Pretoria  
J. L. B. Smith Institute of Ichthyology,  
Grahamstown  
The Jewish Museum, Cape Town  
The Jewish Museum, Johannesburg  
The Johannesburg Art Gallery, Johannes-  
burg  
Kaffrarian Museum, King William's  
Town  
Kilie Campbell Africana Library, Durban  
King George VI Art Gallery, Port Eliza-  
beth  
King Edward VII School Museum,  
Houghton  
Klerksdorp Town Council, Klerksdorp  
Kokstad Municipality, Kokstad  
Kwa-Zulu Cultural Museum, Ulundi  
Leeudoringstad Town Council, Leeudoring-  
stad  
Lichtenburg Town Council, Lichtenburg  
Lydenburg Town Council, Lydenburg  
Mafikeng Museum, Mafikeng  
Mary Moffat Museum, Griquatown  
McGregor Museum, Kimberley  
Michaelis Collection, Cape Town  
Middelburg Town Council, Middelburg  
Military Museia, Pretoria  
Millwood House, Knysna  
Montagu Museum, Montagu  
Mossel Bay Museum, Mossel Bay  
Museo D, Alvaro de Castro, Maputo  
Museum of Malawi, Malawi  
Mutare Museum, Zimbabwe  
National Cultural History and Open Air  
Museum, Pretoria  
Nasionale Afrikaanse Letterkunde  
Museum en Navorsingsentrum (NALN),  
Bloemfontein  
Natal Museum, Pietermaritzburg  
Natal Provincial Library Service, Pieter-  
maritzburg  
National Archives of Zimbabwe, Zim-  
babwe  
National Botanic Gardens, Claremont  
National English Literary Museum and  
Documentation Centre, Grahamstown  
National Gallery of Zimbabwe, Zim-  
babwe

National Monuments Council, Cape Town  
 National Museum, Bloemfontein  
 National Museum, Zimbabwe  
 National Museum and Art Gallery of Botswana, Botswana  
 National Museum of Victoria, Australia  
 National Parks Board, Pretoria  
 National Zoological Gardens, Pretoria  
 Old Harbour Museum, Hermanus  
 Oorlogsmuseum van die Boererepublieke, Bloemfontein  
 Oude Kerk Volksmuseum, Tulbagh  
 Oudemeester Group, Stellenbosch  
 Oude Pastorie Museum, Paarl  
 Our Heritage Museum, Adelaide  
 Pietersburg Museum, Pietersburg  
 Port Elizabeth Museum, Humewood  
 Port Elizabeth Technikon, Port Elizabeth  
 Port Elizabeth University, Port Elizabeth  
 Post Office Museum, Pretoria  
 Potchefstroom Museum, Potchefstroom  
 Potchefstroom University, Potchefstroom  
 Potchefstroom University Ethnology Museum, Potchefstroom  
 Potchefstroom University Institute for Zoological Research, Potchefstroom  
 Pretoria Art Museum, Pretoria  
 Queenstown & Frontier Museum, Queenstown  
 Queen Victoria Museum, Zimbabwe  
 Raad vir Nasionale Gedenkwaardighede, Kaapstad  
 Randse Afrikaanse Universiteit, Johannesburg

Rembrandt Art Foundation, Stellenbosch  
 Roberts Heights Military Collection, Pretoria  
 Robertson Museum, Robertson  
 Roodepoort Museum, Roodepoort  
 Sabie Forestry Museum, Sabie  
 Simon's Town Museum, Simon's Town  
 Simon van der Stel Foundation, Pretoria  
 Skukuza Museum, Skukuza  
 SA Artillery Training Museum, Potchefstroom  
 SA Cultural History Museum, Cape Town  
 SA Institute of Electrical Engineers, Marshalltown  
 SA Library, Cape Town  
 SA Mint, Pretoria  
 South African Museum, Cape Town  
 SA National Gallery, Cape Town  
 SA National Museum of Military History, Saxonwold  
 SA Nature Conservation Centre, Parkview  
 SA Numismatic Society, Cape Town  
 SA Railways Museum, Johannesburg  
 SWA Scientific Society, Windhoek  
 Stanger and Lower Tugela Regional Museum, Stanger  
 State Library, Pretoria  
 State Museum, Windhoek  
 Stellenbosch Museum, Stellenbosch  
 Stellenbosch University dept. of Afrikaans Culture and Folklore/Museology, Stellenbosch

Stellenbosch University dept. of Ethnology, Stellenbosch  
 Stellenbosch University Art Museum, Stellenbosch  
 Swakopmund Museum, Swakopmund  
 Swaziland National Museum, Swaziland  
 Tatham Art Gallery, Pietermaritzburg  
 Transkei National Museum, Transkei  
 Transvaal Museum, Pretoria  
 TPA Library and Museum Service, Pretoria  
 Transvaal Education Museum, Pretoria  
 University of Cape Town, Rondebosch  
 University of Durban-Westville, Durban  
 University of Pretoria, Pretoria  
 University of the Witwatersrand, Johannesburg  
 Vereeniging Town Council, Vereeniging  
 Victoria West Museum, Victoria West  
 Voortrekker Museum, Pietermaritzburg  
 Warrior's Gate Museum (MOTH), Durban  
 Waterval Boven Health Committee, Waterval Boven  
 Wheat Industry Museum, Moorreesburg  
 William Fehr Collection, Cape Town  
 William Humphreys Art Gallery, Kimberley  
 Weenen Town Council Museum, Weenen  
 Welkom Town Council, Welkom  
 Worcester Museum, Worcester  
 Zeerust Museum, Zeerust  
 Zululand Historical Museum, Eshowe