

11 JUN 26

EGXT AD 2.1 - LOCATION INDICATOR AND NAME

EGXT - WITTERING

EGXT AD 2.2 - AERODROME GEOGRAPHICAL AND ADMINISTRATIVE DATA

1	ARP Co-ordinates and site at AD:	N52 36 47.00 W000 28 33.26 Centred on mid-point of Rwy 07/25.
2	Direction and distance from City:	10nm NW of Peterborough.
3	Elevation/Reference Temperature:	274ft/22° C.
4	Magnetic Variation / Annual Change:	0.98°E (APR 26) / -0.02°E
5	Geoid Undulation at AD Elev Position:	154ft/47m
6	AD Administration: Address: Telephone: E-mail: Web site:	Royal Air Force. RAF Wittering Peterborough Cambridgeshire PE8 6HB. Mon-Fri contact ATC Mil: 95351 7050 Civ: (01780) 417050 MOB: 07580 882090. Weekend Contact: ATC Mil: 95351 x 7505. Civ: (01780) 417505. wit-airops-stnops@mod.gov.uk www.raf.mod.uk/our-organisation/stations/raf-wittering/
7	Types of Traffic Permitted (IFR/VFR):	IFR/VFR
8	Remarks:	Wittering ATZ active for 24 Hours.

EGXT AD 2.3 - OPERATIONAL HOURS

1	AD:	RAF Wittering
2	Customs and Immigration:	By arrangement.
3	Health and Sanitation:	Nil.
4	AIS Briefing Office:	Nil.
5	ATS Reporting Office (ARO):	Nil.
6	MET Briefing Office:	Nil.
7	ATS:	0800(A) - 1730(A) Mon-Fri. 0900(A) - 1700(A) Sat-Sun.
8	Fuelling:	By PPR.
9	Handling:	By PPR.
10	Security:	H24.
11	De-Icing:	Nil.
12	Remarks:	PPR requests are to be made within a minimum of 72-hour period excluding weekends (24 hour for Military). AWCU hours - as per AD and ATS hours. Drone requests - a minimum of 72 hours' notice is to be given excluding weekends. AD and ATS Hours Mon - Fri 0800-1730, Sat and Sun 0900-1700.

EGXT AD 2.4 - HANDLING SERVICES AND FACILITIES

1	Cargo Handling Facilities:	Nil.
2	Fuel/Oil /HydraulicTypes:	Nil.
3	Fuelling Facilities/Capacity:	Nil.
4	Oxygen:	Nil.
5	De-Icing Facilities:	Nil.
6	Starting Units:	Nil.
7	Hangar space for visiting aircraft:	Nil.
8	Repair facilities for visiting aircraft:	Nil.
9	Remarks:	No Handling Services available

11 JUN 26

EGXT AD 2.5 - PASSENGER FACILITIES

1	Accommodation:	Military Accommodation only.
2	Medical Facilities:	Military Medical Only.
3	Remarks:	Nil.

EGXT AD 2.6 - RESCUE AND FIRE FIGHTING SERVICES

1	AD Category for Fire Fighting:	ARFF ICAO 2 during operational hours.
2	Rescue Equipment:	As required for ARFF ICAO 2.
3	Capability for removal of disabled aircraft:	Type specific.

EGXT AD 2.7 - SEASONAL AVAILABILITY - CLEARING

1	Type of Clearing equipment:	Nil.
2	Remarks:	Braking action assessment by Mu-Meter. Latest information from ATC. Seasonal clearing does not normally take place unless specific reasons apply.

EGXT AD 2.8 - APRONS, TAXIWAYS AND CHECK LOCATIONS DATA

1	Apron surfaces:	Apron	Surface	Strength	
		Main ASP (From Twy Y to W edge of Twy Z)	Concrete	PCN 54/R/C/W/T	
		Main ASP (E of Twy Z)	Concrete	PCN 31/R/D/W/T	
		Harrier East Dispersal	Concrete	PCN 36/R/B/W/T	
		Harrier West Dispersal	Concrete	PCN 36/R/B/W/T	
		Bays 13,14,15,16	Concrete	PCN 23/R/C/W/T	
		Compass Base	Concrete	PCN 54/R/C/W/T	
2	Taxiway width, surface and strength:	Taxiway	Width	Surface	Strength
		November	22(m)	Asphalt	PCN 69/F/B/W/T
		Sierra	22(m)	Asphalt	PCN 82/F/C/W/T
		Whiskey	18(m)	Asphalt	PCN 68/R/D/W/T
		Alpha	22(m)	Asphalt	PCN 90/F/B/W/T
		Bravo,Delta	22(m)	Asphalt	PCN 90/F/A/W/T
		Charlie	22(m)	Asphalt	PCN 30/R/B/W/T
		Yankee	15(m)	Asphalt	PCN 86/F/B/W/T
		Zulu	15(m)	Asphalt	PCN 85/F/D/W/T
		Double Spectacles	22(m)	Asphalt/Concrete	PCN 80/F/C/W/T / 54/R/B/W/T
3	Altimeter Check Location and Elevation:	Nil.			
4	VOR Checkpoints: INS Checkpoints:	Nil. Nil.			
5	Remarks:	1. Aircraft with wingspan greater than 60m taxi with caution abeam ATC due to restricted clearance. 2. Parking bays 9-12, 19 and 20 closed.			

22 JAN 26

EGXT AD 2.9 - SURFACE MOVEMENT GUIDANCE AND CONTROL SYSTEM MARKINGS

1	Use of aircraft stand ID signs: Taxiway guide lines & visual docking/parking guidance system of aircraft stands:	Nil. Yellow taxiway markings and parking slot guidance with ground marshallsers.
2	Runway & taxiway markings & lighting:	Runway: Runway designation, threshold / displaced threshold (RW 07), Runway centreline, mid-point bar, non-standard lighting with green threshold wingbars. Distance To Go Markers with White illuminated numbers on a black background each side of the Runway at 1000ft spacing. Taxiway: Green centreline lighting, double unit at stop bars. Blue edge lighting on loops of Double Specs and Main ASP. No lighting North of the runway.
3	Stop Bars and runway guard lights:	Runway guard lights
4	Other runway protection measures:	Illuminated holding point boards.
5	Remarks:	a. Airfield lighting is not NVG compliant. Obstruction lighting is NVG compliant. b. No RESA. c. Non-standard stopways.

EGXT AD 2.10 - AERODROME OBSTACLES

Please refer to the "Measured Height Survey" data on the UK Mil AIP website www.aidu.mod.uk/aip.

EGXT AD 2.11 - METEOROLOGICAL INFORMATION

1	Associated MET Office:	Wattisham Met Office
2	Hours of service: MET Office outside hours:	0700(A)-1730(A) ----
3	Office responsible for TAF information: Periods of validity:	Wattisham Met Office ----
4	Type of landing forecast: Interval of issuance:	TAF 3 hours.
5	Briefing/consultation provided:	Self-briefing / personal / telephone.
6	Flight documentation: Language(s) used:	Charts / TAFs / METARs. Abbreviated plain English text.
7	Charts and other information available for briefing or consultation:	Actual / Forecast surface analyses and upper wind charts, rainfall radar, tephigrams, satellite imagery, thunderstorm location.
8	Supplementary equipment available for providing information:	MOMIDS.
9	ATS units provided with information:	Nil.
10	Additional information (limitation of services etc):	Nil.
11	Remarks:	Nil.

11 JUN 26

EGXT AD 2.12 - RUNWAY PHYSICAL CHARACTERISTICS					
Designations Runway Number	True bearing	Dimensions of Runway (m)	Strength (PCN) and surface of Runway and stopway	Threshold co-ordinates	Threshold elevation highest elevation of TDZ of precision APP Rwy
1	2	3	4	5	6
07	073.17°	2755 x 56	Runway - 84/F/B/W/T Concrete end - 54/R/C/W/T	N52 36 34-28 W000 29 42-43	273-62ft TDZE 273-62ft
25RH	253.20°	2755 x 56	Runway - 84/F/B/W/T Concrete end - 54/R/C/W/T	N52 36 59-73 W000 27 24-07	244-48ft TDZE 254-63ft
Desig & Slope of Rwy/Swy	Stopway Dimensions (m)	Clearway Dimensions (m)	Strip Dimensions (m)	OFZ	RESA
7	8	9	10	11	12
07 - 0.32%D	Nil	390 x 150	2875 x 280	-	-
25 - 0.32%U	Nil	902 x 150	2875 x 280	-	-
13	Arresting Systems				
Nil.					
14	Remarks	25RH Runway marshall grooved asphalt, brushed concrete thresholds.			

EGXT AD 2.13 - DECLARED DISTANCES					
Runway	TORA (m)	TODA (m)	ASDA (m)	LDA (m)	Remarks
1	2	3	4	5	6
07	2755	3145	2755	2719	Nil.
25RH	2755	3657	2755	2755	Nil.

EGXT AD 2.14 - APPROACH AND RUNWAY LIGHTING								
Runway	Approach lighting Type Length Intensity	Threshold lighting Colour Wingbars	PAPI VASIS Angle Distance from Thr (MEHT)	TDZ lighting Length	Runway Centreline lighting Length Spacing Colour Intensity	Runway edge lighting Length Spacing Colour Intensity	Runway End lighting Colour Wingbars	Stopway lighting Length(m) Colour
1	2	3	4	5	6	7	8	9
07	CL2B 1476ft/450m HI	Dspld HI Green wingbars	PAPI 3° Dspld from Thld, Starboard 415m Port 448m (64ft) RH	---	Colour coded, 30m spacing, HI	HI, Bidirectional, 60m spacing	HI Uni Red	---
25 (RHC)	CL5B 2874ft/876m HI	HI Green wingbars	PAPI 3° Starboard 348m, Port 363m (64ft)	---	Colour coded, 30m spacing, HI	HI, Bidirectional, 60m spacing	HI Uni Red	---
10	Remarks:							

26 DEC 24

EGXT AD 2.15 - OTHER LIGHTING, SECONDARY POWER SUPPLY		
1	A Bn/I Bn location, characteristics and hours of operation:	I Bn: N W "WJ" • - - • - - HO. Red.
2	Anemometer location and lighting:	52 36 41-38N 000 27 59-38W Red obstruction light.
3	Taxiway edge and centreline lighting:	Green centreline lighting is installed on all taxiways located south of the main runway and on the Double Spectacle Apron. Taxiway edge lights are present on both the Double Spectacle and ASP Aprons.
4	Secondary power supply: Switch-over time:	Yes. ----
5	Remarks:	Airfield lighting is not NVG compliant. Obstacle lighting NVG compliant.

EGXT AD 2.16 - HELICOPTER LANDING AREA		
1	Location:	Nil.
2	Elevation:	Nil.
3	Lighting:	Nil.
4	Remarks:	Approaches / Departures to / from runway. Parking as directed by ATC.

EGXT AD 2.17 - ATS AIRSPACE	
Wittering MATZ.	
Please refer to the Civ AIP, ENR 2.2, Para 2.4. https://nats-uk.ead-it.com/cms-nats/opencms/en/Publications/AIP/	
Wittering ATZ.	
Please refer to the Civ AIP, ENR 2.2. https://nats-uk.ead-it.com/cms-nats/opencms/en/Publications/AIP/	

EGXT AD 2.18 - ATS COMMUNICATION FACILITIES					
Service Designation	Callsign	Frequency MHz	Hours of Operation		Remarks
			Winter	Summer	
1	2	3	4		5
TWR	Wittering Tower	379-100P 127-980P 122-100S*	HO	HO	*= NATO Common.
GND	Wittering Ground	276-850P 122-100S*	HO	HO	
DATIS	Wittering	282-400	HO	HO	
APP	Wittering Approach	234-075(ICF)	HO	HO	
ZONE	Wittering Zone	344-600 119-680(ICF)	HO	HO	
Talkdown	Wittering Talkdown	276-650(P) 372-125(S) 135-205	HO	HO	

27 NOV 25

EGXT AD 2.19 - RADIO NAVIGATION AND LANDING AIDS

Type Category (Variation)	Ident	Frequency	Hours of Operation		Antenna Site co-ordinates	Elevation of DME Transmitting antenna	Remarks
			Winter	Summer			
			# and by arrangement				
1	2	3	4		5	6	7
TACAN	WIT	Ch 123X 117.600	HO	HO	N52 36 25.20 W000 29 43.86	315ft	TACAN Unlocks may be experienced between 038-045°. Possible azimuth swings between 305° and 315°. Possible loss of TACAN signal 030° - 60° and between 255° - 285°.
HRDF		234.075 344.600 379.100 119.675 362.300*	HO	HO	N52 36 33.95 W000 30 34.32	310ft	*NATO Common Frequency. Available on request only.
Remarks:							

EGXT AD 2.20 - LOCAL TRAFFIC REGULATIONS

1	Airport regulations a. Circuit height Rwy 25/07 - 1100ft QNH (Light FW/ RW) - 1300ft QNH (All other ac). b. Overflight of the explosive storage area (ESA) to the SW and Wittering Village to the SE of the AD prohibited below 1300ft QNH.
2	Ground Movement Nil.
3	CAT II/III Operations Nil.
4	Warnings a. Sibson aerodrome 5nm SE. Circuit height 1000AGL. Parachuting from FL150. b. Shacklewell Farm Flying School 4nm NW (1nm E of Rutland Dam). Circuit height 800AGL remaining N of Stamford-Oakham railway line.
5	Helicopter Operations None specified.
6	Use of Runways a. Non-standard displaced Threshold markings on Rwy 07.
7	Training Nil.

EGXT AD 2.21 - NOISE ABATEMENT PROCEDURES

Refer to TAP Charts.

EGXT AD 2.22 - FLIGHT PROCEDURES

1	Procedures for in bound aircraft:	Call Wittering ICF prior to MATZ boundary. Join via initial: 2nm from the threshold, displaced 100m from the extended centerline, on deadside.
2	Departures:	IFR/VFR.
3	Radio Communication Failure:	See TAP Charts
4	Missed Approach Procedure:	Missed Approach terminates at Wit 7d.
5	Aerodrome Operating Minima:	N/A
6	Instrument Approach Procedures:	As per TAP Charts.

EGXT AD 2.23 - ADDITIONAL INFORMATION

Nil.

11 JUN 26

EGXT AD 2.24 - CHARTS RELATING TO THIS AERODROME

Terminal Approach Procedure Charts

D1	Aerodrome	AD 2 - EGXT - 1 - 9
G1	Rwy 07/25 MID	AD 2 - EGXT - 1 - 10
G2	MID 1(RNAV 1 DME/DME or GNSS) Rwy 07/25	AD 2 - EGXT - 1 - 11
G3	MID 2(RNAV 1 DME/DME or GNSS) Rwy 07/25	AD 2 - EGXT - 1 - 12
K2	PAR Rwy 07	AD 2 - EGXT - 1 - 13
K3	PAR Rwy 25	AD 2 - EGXT - 1 - 14
K4	SRA Rwy 07	AD 2 - EGXT - 1 - 15
K5	SRA Rwy 25	AD 2 - EGXT - 1 - 16
K6	ATC Surveillance Mnm Altitude	AD 2 - EGXT - 1 - 17
L1	RNP Rwy 07	AD 2 - EGXT - 1 - 18
L2	RNP Rwy 25	AD 2 - EGXT - 1 - 19
L3	IAP Coding Table Rwy 07	AD 2 - EGXT - 1 - 20
L4	IAP Coding Tables Rwy 25 via ETCAG/MIFEW	AD 2 - EGXT - 1 - 21
L5	IAP Coding Table Rwy 25 via AVGAF	AD 2 - EGXT - 1 - 22
L6	MID 1&2(RNAV 1 DME/DME or GNSS) CODING TABLES	AD 2 - EGXT - 1 - 23

INTENTIONALLY BLANK

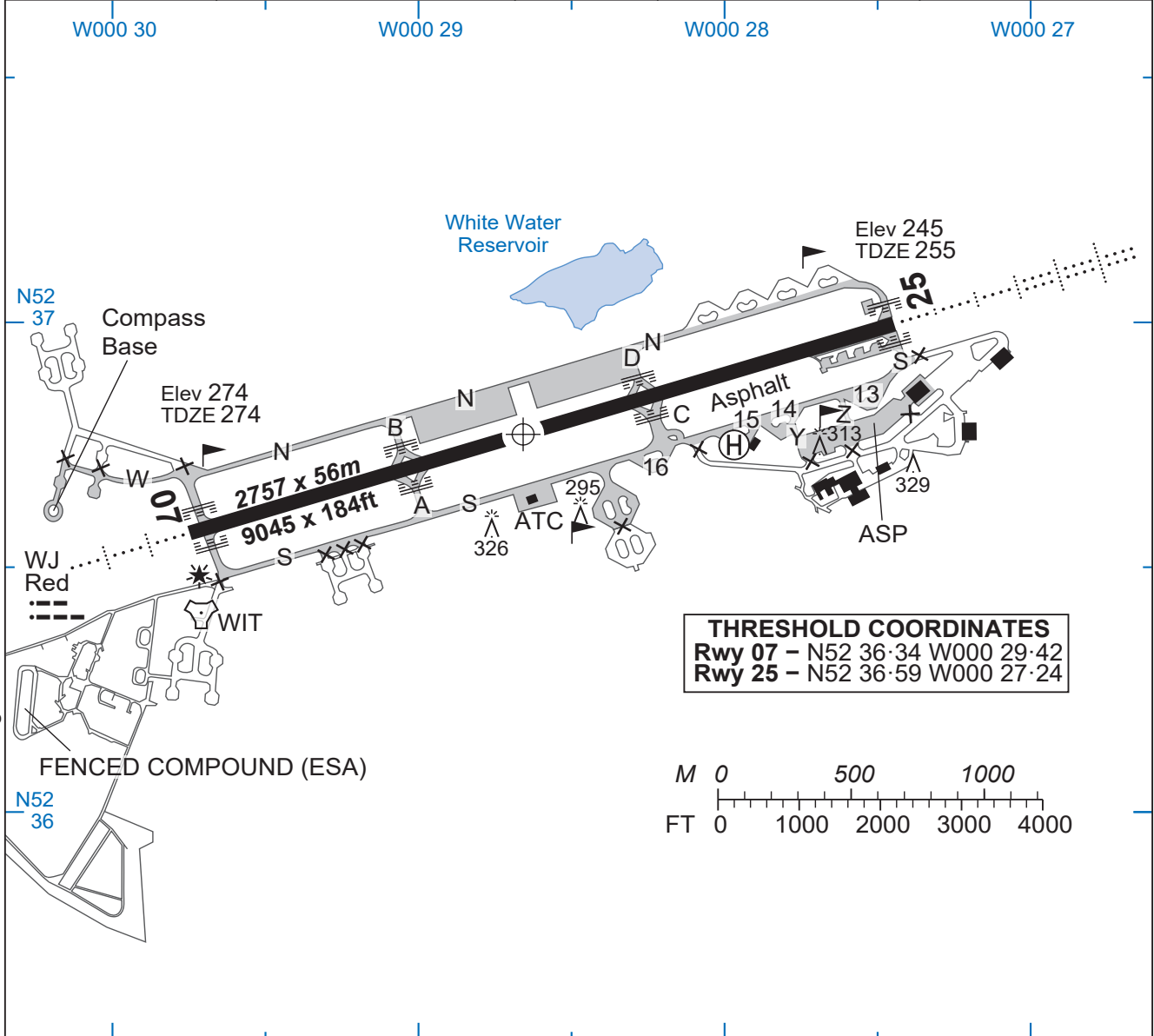
AERODROME

WITTERING

Elev 274	Var 1°E	ARP	N52 36.78 W000 28.55 (WGS 84)		11 JUN 26	D1
GROUND 276.85 122.1		TOWER 127.980P 122.1		APP 234.075	ZONE 344.6 119.680 (ICF)	
W000 30		W000 29		W000 28		W000 27

EGXT/- ENGLAND

Changes: Annual Maintenance



THRESHOLD COORDINATES	
Rwy 07	N52 36.34 W000 29.42
Rwy 25	N52 36.59 W000 27.24

RWY	SLOPE	LDA m/ft	APP LGT		RWY LGT
07 (073°T)	0.32%D	2720/8924	P3° (40)	CL-2B (H)	RTHL+WB:REDL(H):RENL:RCLL
25 (253°T)	0.32%U	2756/9042	P3° (51)	CL-5B (H)	

- CAUTION.** Large grass bank runs alongside the northern edge of ASP. Low wing AS should not taxi north of twy markings.
- Circuits.**
 - Direction:** Rwy 25 RHC.
 - Height:** Normal 1100ft QNH (Light FW/RW). 1300ft QNH (All other acft).
- Northern and Western Twys carry non-standard markings.
- Main ASP unsighted from ATC.
- Taxiway Charlie not suitable for AC larger than A400.
- Non-standard dashed twy centreline for A330 on Double spectacles.

No 1 AIDU Last Amended 20 APR 26

© UK MOD Crown Copyright 2026. No 1 AIDU is not responsible for, and claims no right to, the content or accuracy of 3rd party documents/information.

WITTERING

AERODROME

Rwy 07/25 MID

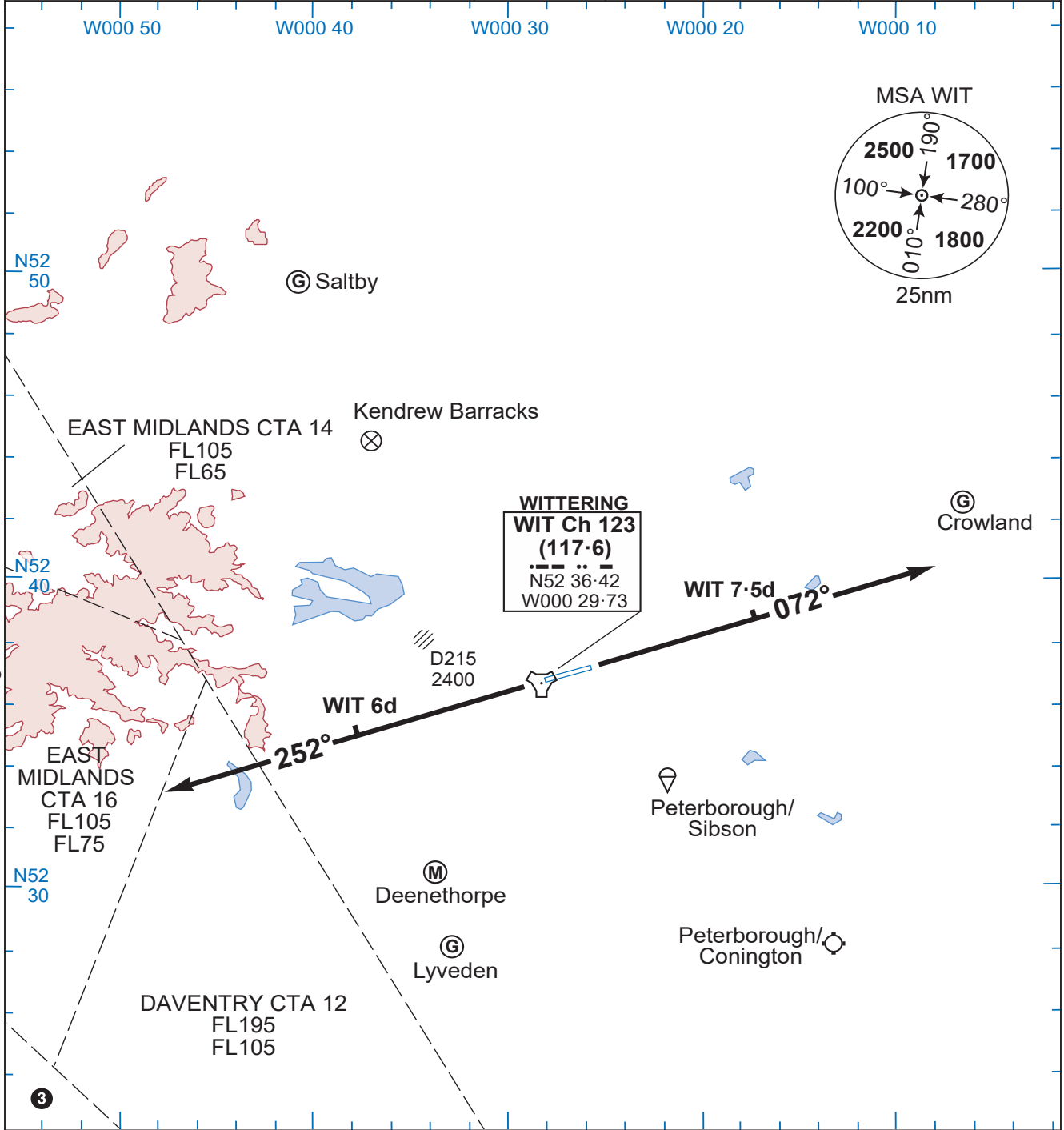
WITTERING

Elev 274	Var 1°E	TA 3000 ①	TRL ATC		11 JUN 26	G1
GROUND 276.85 122.1		TOWER 379.1 127.980P 122.1		APP 234.075	ZONE 344.6 119.680 (ICF)	
						DATIS 282.4

EGXT/- ENGLAND

Changes: Annual Maintenance

No 1 AIDU Last Amended 20 APR 26



- ① TA 6000 inside Daventry and East Midlands CTA.
- 2. Close-in obstacles exist, for departures from both rwy ends.
- ③ DAVENTRY CTA 13 FL75-FL195.

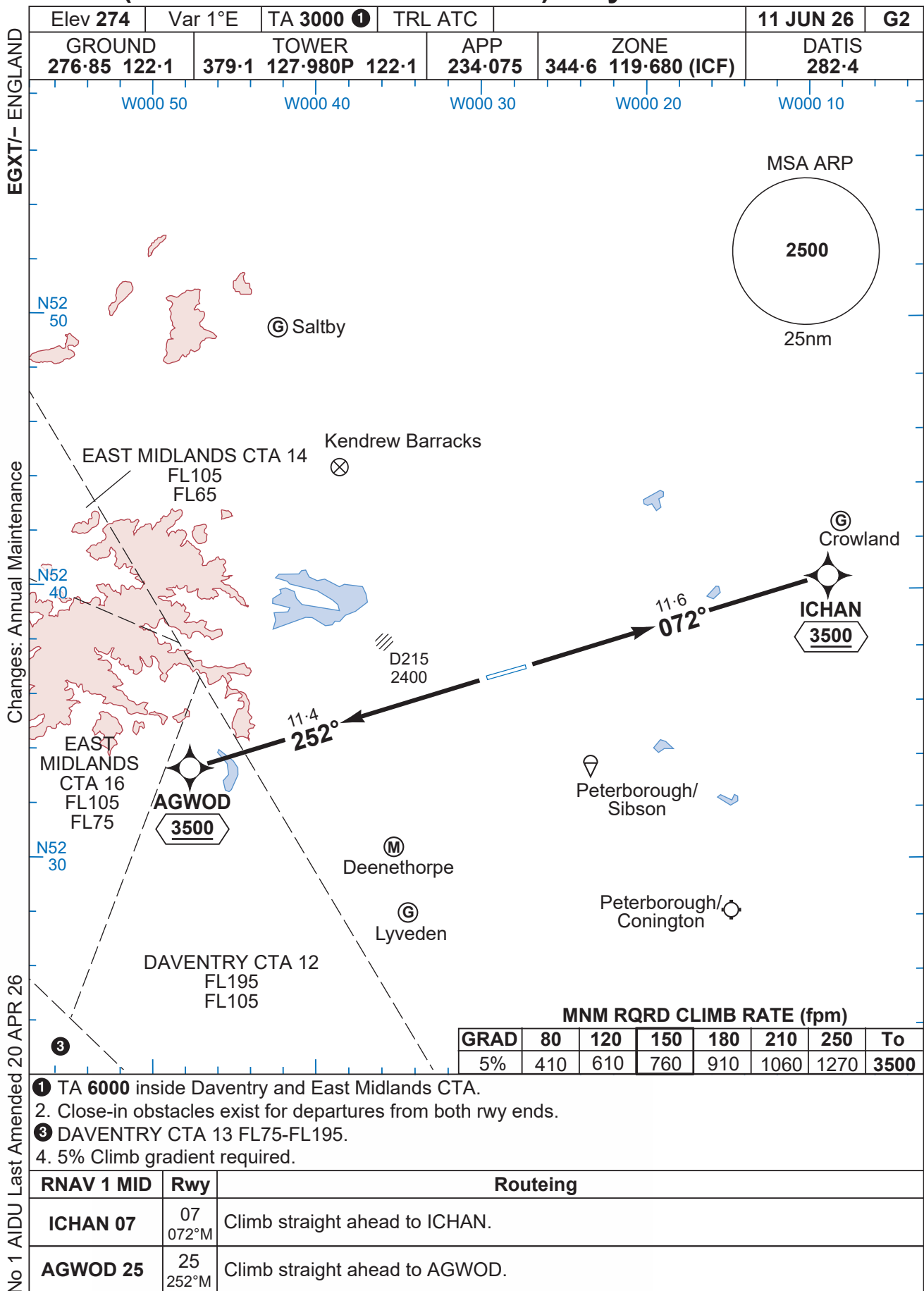
Rwy	Routeing (Including Mnm Noise Routes)
Rwy 07 072°M	Ahead on Rwy Tr to WIT 7.5d or 3800 3530 , whichever is later.
Rwy 25 252°M	Ahead on Rwy Tr to WIT 6d or 3800 3530 , whichever is later.

WITTERING MIPS

Rwy 07/25 MID

© UK MOD Crown Copyright 2026. No 1 AIDU is not responsible for, and claims no right to, the content or accuracy of 3rd party documents/information.

MID 1 (RNAV 1 DME/DME or GNSS) Rwy 07/25 WITTERING

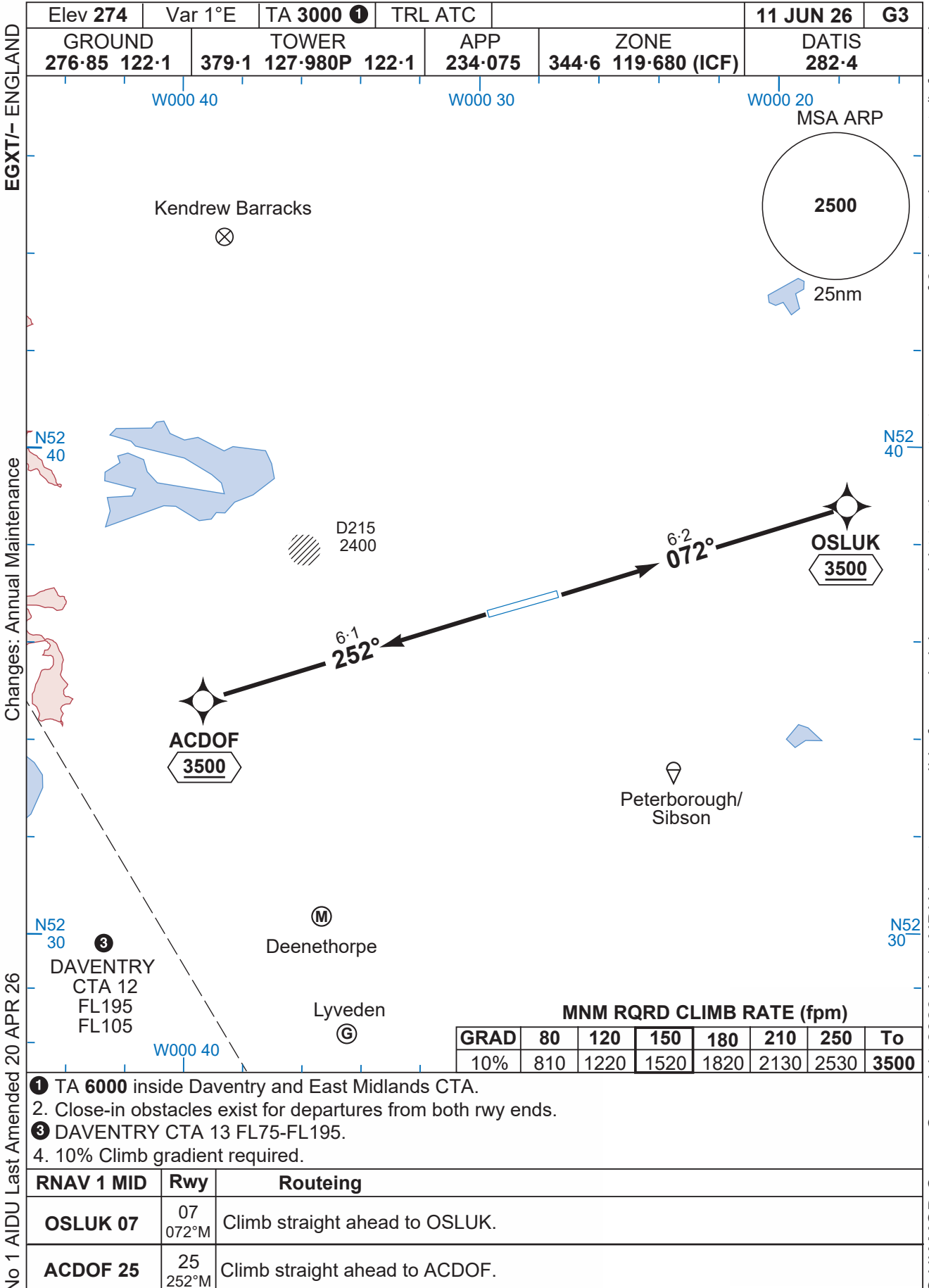


EGXT/- ENGLAND
Changes: Annual Maintenance
No 1 AIDU Last Amended 20 APR 26

© UK MOD Crown Copyright 2026. No 1 AIDU is not responsible for, and claims no right to, the content or accuracy of 3rd party documents/information.

WITTERING MID 1 (RNAV 1 DME/DME or GNSS) Rwy 07/25

MID 2 (RNAV 1 DME/DME or GNSS) Rwy 07/25 WITTERING



Changes: Annual Maintenance

No 1 AIDU Last Amended 20 APR 26

© UK MOD Crown Copyright 2026. No 1 AIDU is not responsible for, and claims no right to, the content or accuracy of 3rd party documents/information.

WITTERING MID 2 (RNAV 1 DME/DME or GNSS) Rwy 07/25

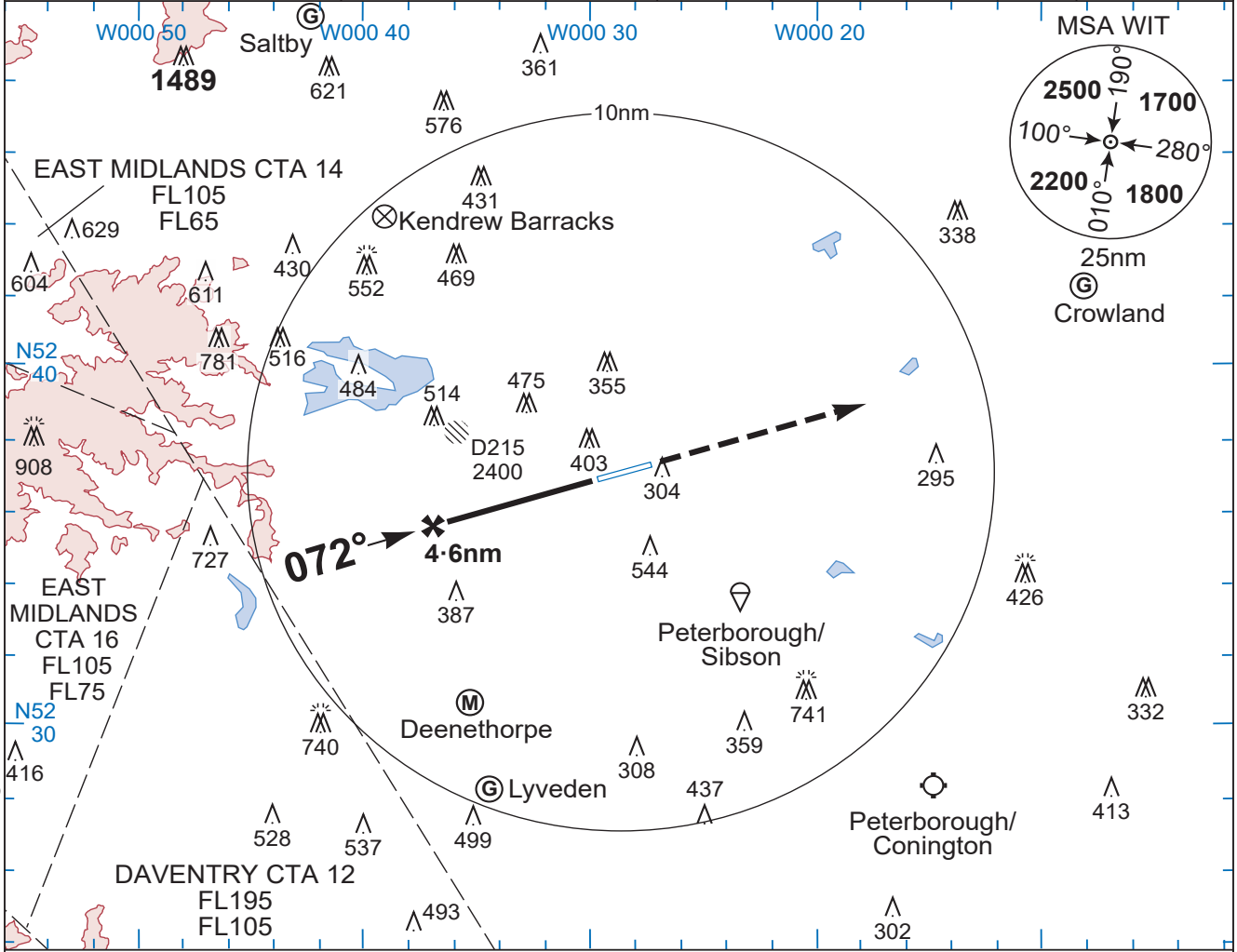
PAR Rwy 07

WITTERING

Elev 274	Var 1°E	TA 3000 ③	TRL ATC	PAR	11 JUN 26	K2
TALKDOWN		TOWER		APP	ZONE	DATIS
276-65	372-125	135-205	379-1	127-980P	122-1	234-075
				344-6	119-680 (ICF)	282-4

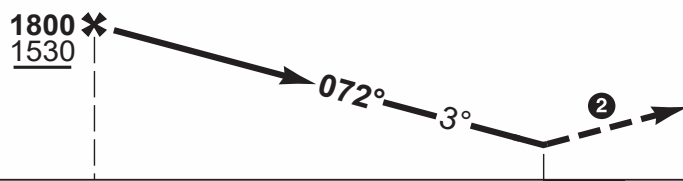
EGXT/- ENGLAND

Changes: Annual Maintenance



Ahead on Rwy Tr to **2800 2530** call APPROACH.

MAPt at THR.



RDH 46						Rwy QFU 072°
MEHT 40						THR Elev 274/9hPa
THR NM	4.6					

CAT	PAR ①		CIRC		
	A	500	230	710	440
B	510	240	840	570	1600m
C	520	250	940	670	2400m
D	530	260	970	700	3600m
E	550	280	1070	800	3600m

GS (kt)	80	120	150	180	210
FAF-THR 4.6nm	3:27	2:18	1:50	1:32	1:19
ROD (fpm)	3°	420	640	800	960

- ① When ALS inop, increase Cat AB vis to 1200m, Cat CDE vis to 1300m.
- ② Missed Approach terminates at WIT 25d.
- ③ TA 6000 inside Daventry and East Midlands CTA.

No 1 AIDU Last Amended 20 APR 26

WITTERING
MIPS

PAR Rwy 07

© UK MOD Crown Copyright 2026. No 1 AIDU is not responsible for, and claims no right to, the content or accuracy of 3rd party documents/information.

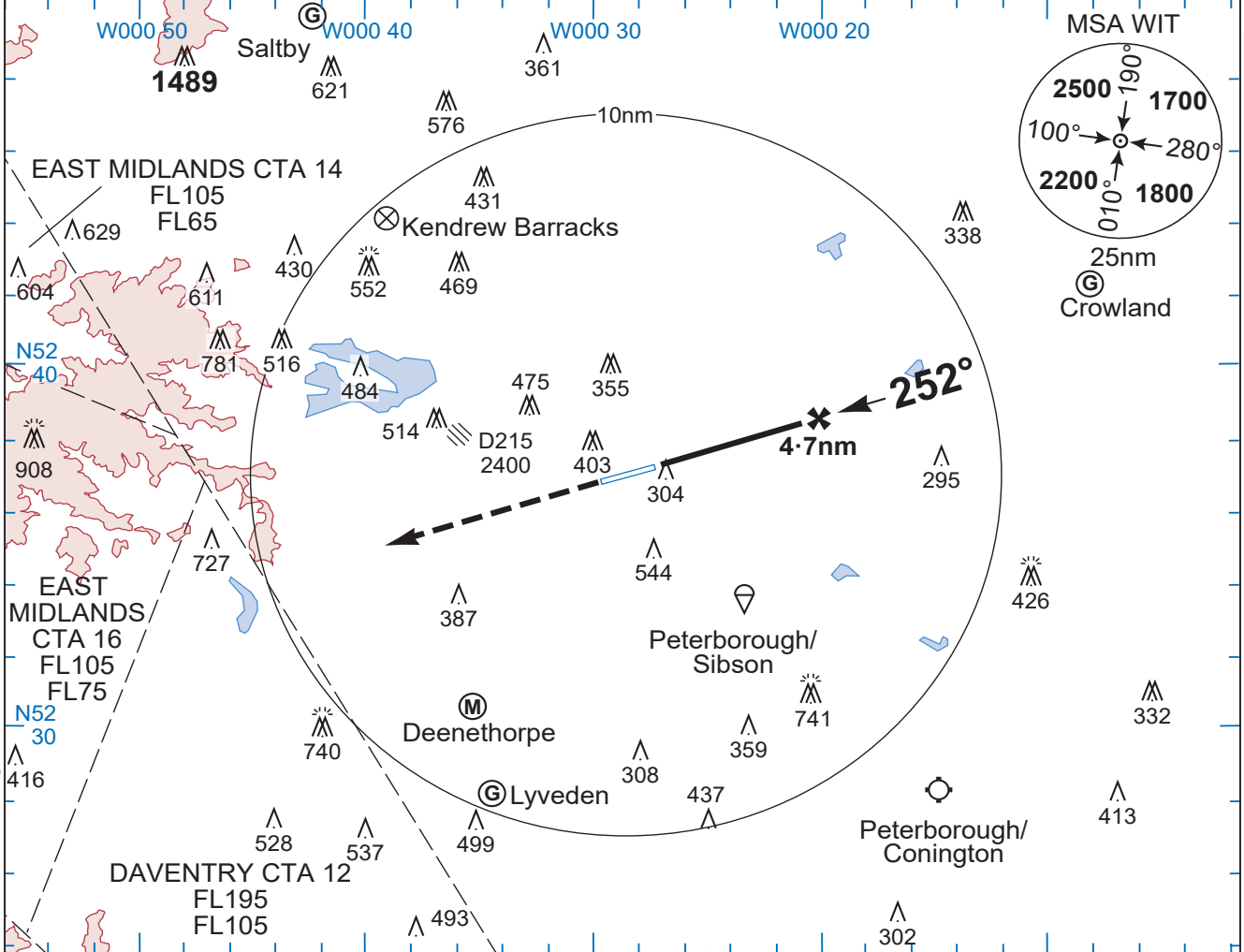
PAR Rwy 25

WITTERING

Elev 274	Var 1°E	TA 3000 ^③	TRL ATC	PAR	11 JUN 26	K3
TALKDOWN 276.65 372.125 135.205		TOWER 379.1 127.980P 122.1		APP 234.075	ZONE 344.6 119.680 (ICF)	DATIS 282.4

EGXT/- ENGLAND

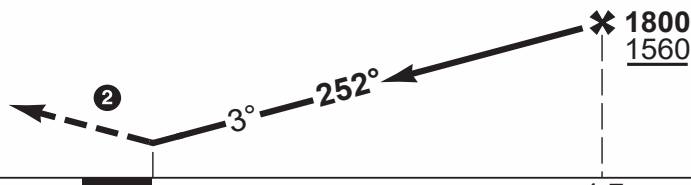
Changes: Annual Maintenance



© UK MOD Crown Copyright 2026. No 1 AIDU is not responsible for, and claims no right to, the content or accuracy of 3rd party documents/information.

Ahead on Rwy Tr
to **2800 2560**
call APPROACH.

MAPt at THR.



RDH 63

MEHT 51

THR NM

Rwy QFU 252°

THR Elev **244/9hPa**

4.7

CAT	PAR ^①	CIRC				
A	470 230 800m	710 440 1500m				
B	480 240 800m	840 570 1600m				
C	490 250 800m	940 670 2400m				
D	500 260 800m	970 700 3600m				
E	520 280 800m	1070 800 3600m				
MIPS		N/A				
GS (kt)		80	120	150	180	210
FAF-THR	4.7nm	3:32	2:21	1:53	1:34	1:21
ROD (fpm)	3°	420	640	800	960	1110

- ① When ALS inop, increase vis Cat AB to 1200m, Cat CDE to 1300m.
- ② Missed Approach terminates at WIT 25d.
- ③ TA 6000 inside Daventry and East Midlands CTA.

No 1 AIDU Last Amended 20 APR 26

WITTERING
MIPS

PAR Rwy 25

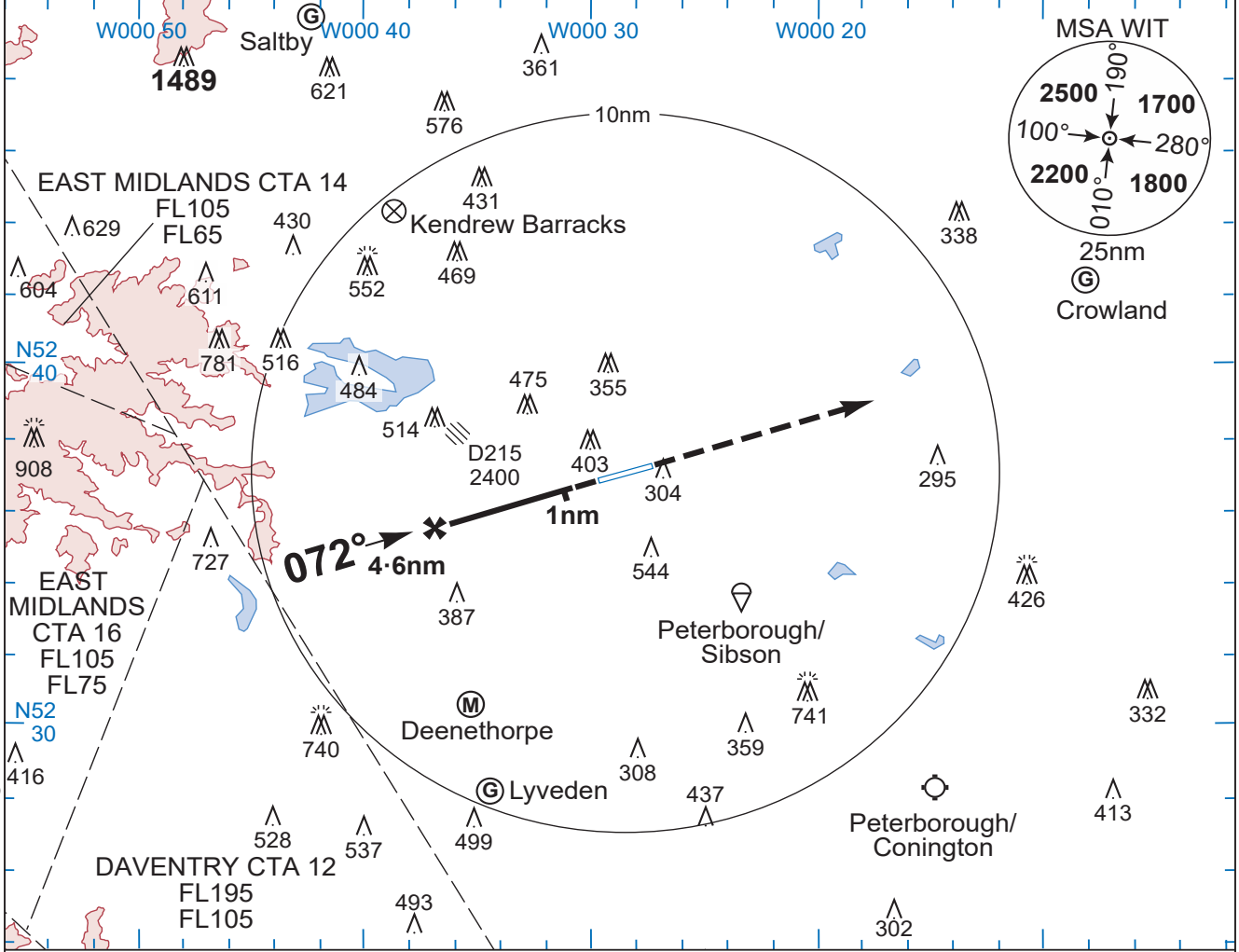
SRA Rwy 07

WITTERING

Elev 274	Var 1°E	TA 3000 3	TRL ATC	SRA	11 JUN 26	K4
TALKDOWN		TOWER		APP	ZONE	DATIS
276.65	372.125	135.205	379.1 127.980P 122.1	234.075	344.6 119.680 (ICF)	282.4

EGXT/- ENGLAND

Changes: Annual Maintenance



Ahead on Rwy Tr to **2800 2530**; call APPROACH.

MAPt at 1nm.



TCH 50	MEHT 40	THR NM 4.6	1	Rwy QFU 072°	THR Elev 274/9hPa
--------	---------	------------	---	--------------	-------------------

CAT	SRA ①	CIRC
A	660 390 1500m	710 440 1800m
B		840 570 1800m
C		940 670 2400m
D		970 700 3600m
E		1070 800 3600m
GS (kt)		80 120 150 180 210
FAF-MAPt 3.6nm		2:42 1:48 1:26 1:12 1:02
ROD (fpm)		3° 420 640 800 960 1110

- ① When ALS inop, increase vis to 1800m.
- ② Missed Approach terminates at WIT 25d.
- ③ TA 6000 inside Daventry and East Midlands CTA.

No 1 AIDU Last Amended 20 APR 26

WITTERING
MIPS

SRA Rwy 07

© UK MOD Crown Copyright 2026. No 1 AIDU is not responsible for, and claims no right to, the content or accuracy of 3rd party documents/information.

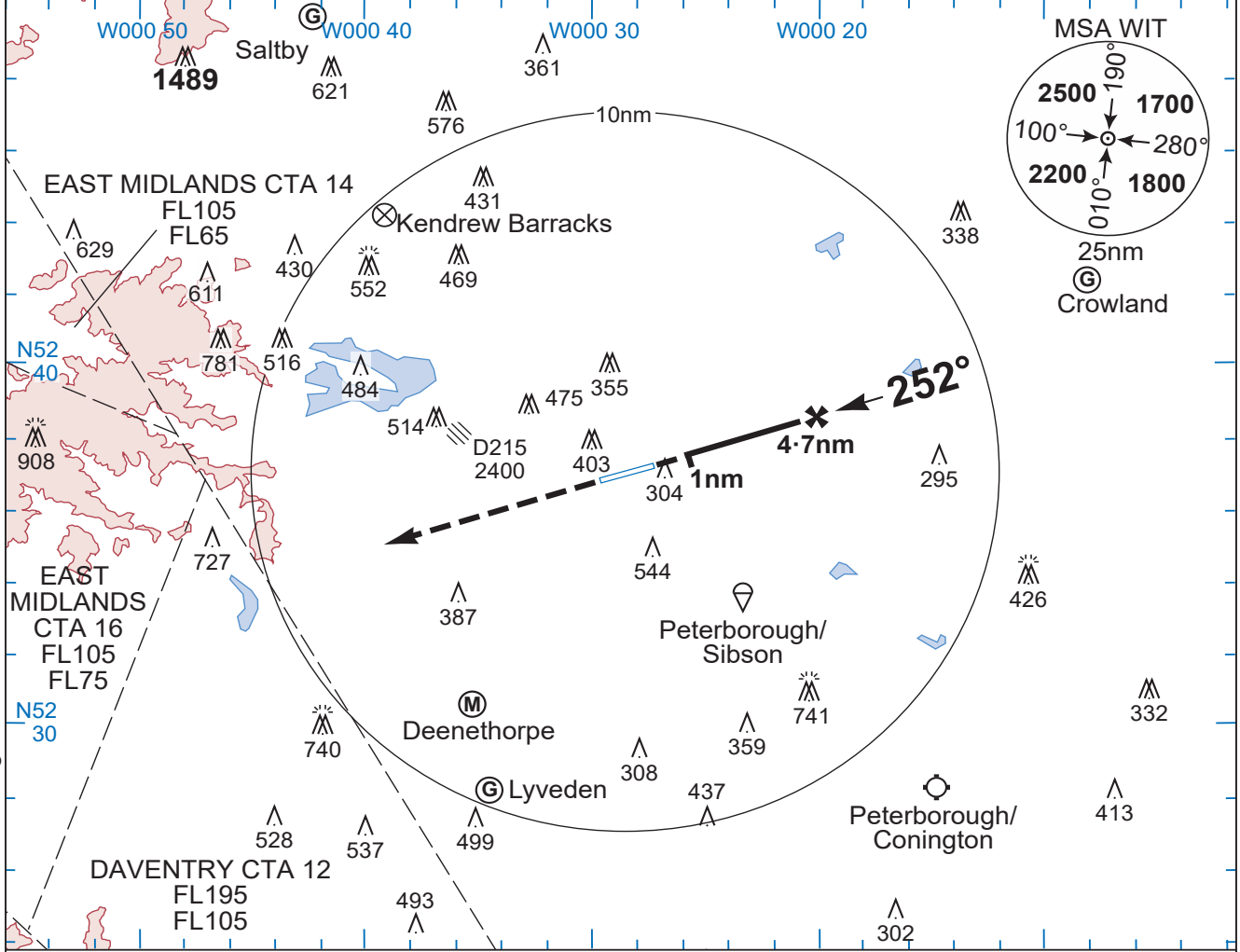
SRA Rwy 25

WITTERING

Elev 274	Var 1°E	TA 3000 ④	TRL ATC	SRA	11 JUN 26	K5
TALKDOWN 276.65 372.125 135.205		TOWER 379.1 127.980P 122.1		APP 234.075	ZONE 344.6 119.680 (ICF)	DATIS 282.4

EGXT/- ENGLAND

Changes: Annual Maintenance



© UK MOD Crown Copyright 2026. No 1 AIDU is not responsible for, and claims no right to, the content or accuracy of 3rd party documents/information.

Ahead on Rwy Tr to **2800 2560**; call APPROACH.

MAPt at 1nm.

Rwy QFU 252°

THR Elev **244/9hPa**

1 4.7

TCH 50

MEHT 51

THR NM

CAT	SRA ②	CIRC	GS (kt)					
			80	120	150	180	210	
A	620 380 1000m	710 440 1700m	N/A	2:47	1:51	1:29	1:14	1:03
B		840 570 1700m		420	640	800	960	1110
C		940 670 2400m						
D		970 700 3600m						
E		1070 800 3600m						

- CAUTION.** Procedure heights are referenced to THR Elev.
- When ALS inop, increase vis to 1700m.
- Missed Approach terminates at WIT 25d.
- TA 6000 inside Daventry and East Midlands CTA.

No 1 AIDU Last Amended 20 APR 26

WITTERING

MIPS

SRA Rwy 25

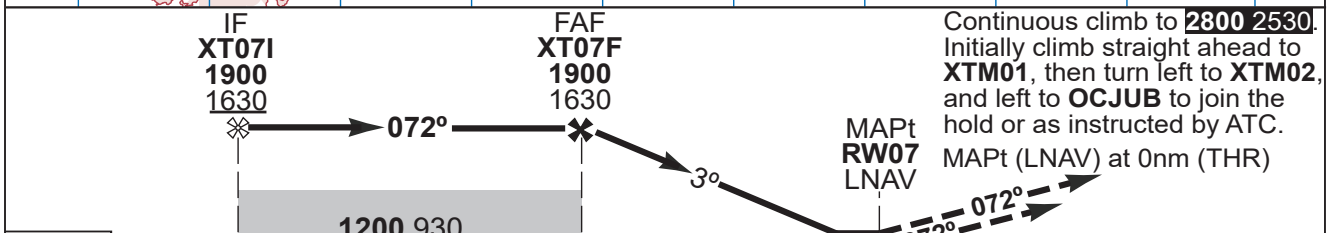
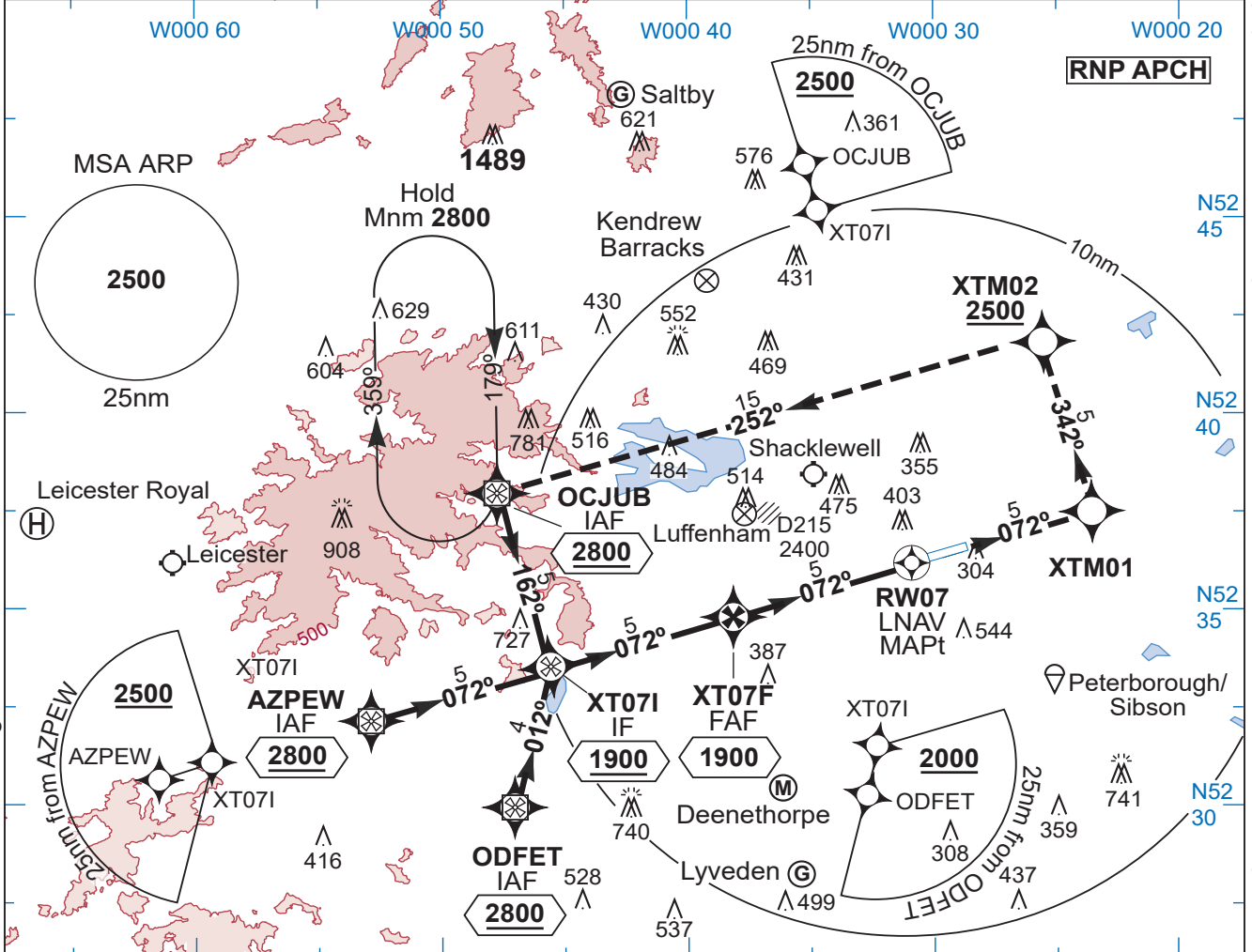
RNP Rwy 07

WITTERING

Elev 274	Var 1°E	TA 3000 ④	TRL ATC	11 JUN 26	L1
APPROACH 234-075		TOWER 379-1 127-980 135-205		GROUND 276-85 122-1	
				DATIS 282-4	

EGXT/-ENGLAND

Changes: Annual Maintenance



TCH 50	Dist NM (THR) 10	5	0	THR Elev 274/6hPa
--------	------------------	---	---	-------------------

CAT	LNAV/VNAV ③	LNAV ②	CIRC					
			710	440	1800m	840	570	1800m
A	540 270 900m	660 390 1400m	710	440	1800m	840	570	1800m
B	550 280 900m		940	670	2400m	970	700	3600m
C	560 290 900m		1070	800	3600m			
D	570 300 900m							
E	590 320 1000m							
GS (kt)		80	120	150	180	210		
FAF-MAPt 5nm		3:45	2:30	2:00	1:40	1:26		
ROD (fpm)		3°	420	640	800	960	1110	

- For uncompensated LNAV-VNAV systems, procedure **Not Auth** below -10°C.
- If approach lighting inop increase vis to 1800m.
- If approach lighting inop increase vis Cat AB to 1300m, vis Cat CDE to 1400m.
- TA 6000 inside Daventry and East Midlands CTA.
- Max speed 230Kt IAS for procedure and hold.

NM	ALT HGT
RW07	
5	1900
	1630
4	1600
	1330
3	1280
	1010
2	960
	690
1	640
	370

No 1 AIDU Last Amended 20 APR 26

WITTERING

MIPS

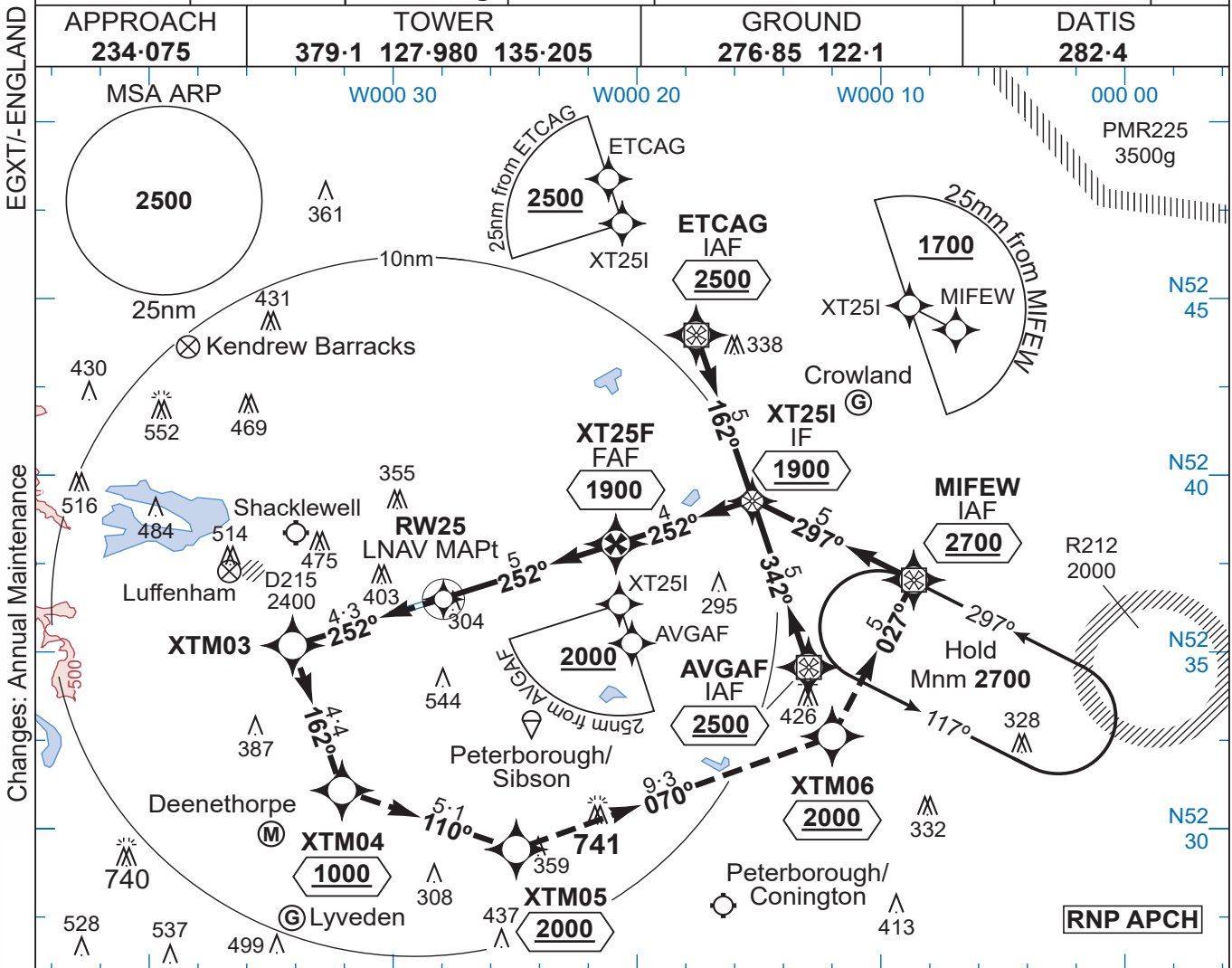
RNP Rwy 07

© UK MOD Crown Copyright 2026. No 1 AIDU is not responsible for, and claims no right to, the content or accuracy of 3rd party documents/information.

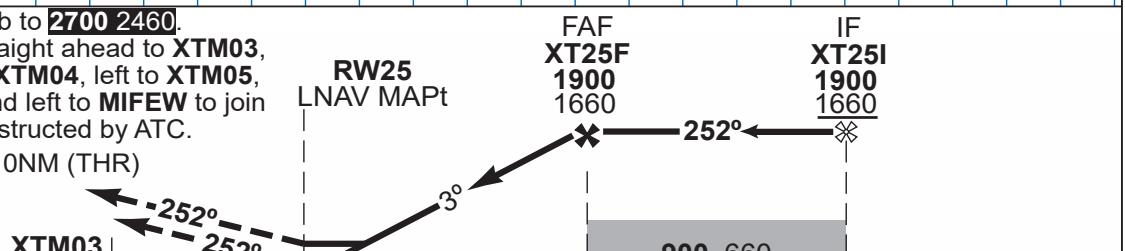
RNP Rwy 25

WITTERING

Elev 274	Var 1°E	TA 3000 ④	TRL ATC	11 JUN 26	L2
APPROACH 234-075	TOWER 379.1 127-980 135-205		GROUND 276.85 122.1		DATIS 282.4



Continuous climb to **2700 2460**.
Initially climb straight ahead to **XTM03**, then turn left to **XTM04**, left to **XTM05**, left to **XTM06** and left to **MIFEW** to join the hold or as instructed by ATC.
MAPt (LNAV) at 0NM (THR)



TCH 50	Dist NM THR	0	5	9 THR Elev 244/6hPa
--------	-------------	---	---	---------------------

CAT	LNAV/VNAV ③	LNAV ②	CIRC				
			80	120	150	180	210
A	500 260 800m	600 360 900m	710 440	180	1:40	1:26	
			840 570	150	2:00	1:40	
B	500 260 800m	600 360 900m	940 670	120	2:30	2:00	
			970 700	80	3:45	3:00	
C	520 280 800m	600 360 900m	1070 800	150	2:00	1:40	
			1070 800	120	2:30	2:00	
D	550 310 800m	600 360 900m	1070 800	180	1:40	1:26	
			1070 800	150	2:00	1:40	
E	570 330 800m	600 360 900m	1070 800	210	1:26	1:00	
			1070 800	180	1:40	1:26	

- For uncompensated LNAV-VNAV systems, procedure **Not Auth** below -10°C.
- If approach lighting inop increase vis to 1600m.
- If approach lighting inop increase vis Cat ABC to 1300m, Cat D to 1400m and Cat E to 1500m.
- TA 6000 inside Daventry and East Midlands CTA.
- Max speed 230Kt IAS for procedure and hold.

NM RW25	ALT HGT
5	1900 1660
4	1570 1330
3	1250 1010
2	930 690
1	610 370

No 1 AIDU Last Amended 20 APR 26

© UK MOD Crown Copyright 2026. No 1 AIDU is not responsible for, and claims no right to, the content or accuracy of 3rd party documents/information.

WITTERING

RNP Rwy 25

IAP CODING TABLE Rwy 07

WITTERING

EGXT/- ENGLAND

Changes: Annual Maintenance

No 1 AIDU Last Amended 20 APR 26

Elev 274		Var 1°E								11 JUN 26	L3
Wittering RNP RWY 07 via ODFET											
Desig	Seq Nbr	Path Terminator	WPt Name	Fly-over	Course/Track °M (°T)	Turn Direction	Level Constraint	Speed Constraint	Co-ordinates	Rmks and Dist to MAPt	
RW07R	001	IF	ODFET	-	-	-	2800	230	N52 29 46.81 W000 46 54.02	IAF	
RW07R	002	TF	XT07I	-	012° (013.29°)	RIGHT	1900	230	N52 33 40.06 W000 45 23.63	IF/ 10nm	
RW07R	003	TF	XT07F	-	072° (072.99°)	-	1900	230	N52 35 08.29 W000 37 28.62	FAF/ 4.95nm	
RW07R	004	TF	RW07	Y	072° (073.10°)	-	-	230	N52 36 34.27 W000 29 42.44	MAPt	
RW07R	005	CF	XTM01	-	072° (073.20°)	LEFT	-	230	N52 38 00.59 W000 21 51.09	-	
RW07R	006	TF	XTM02	-	342° (343.31°)	LEFT	2500	230	N52 42 47.49 W000 24 12.78	-	
RW07R	007	TF	OCJUB	Y	252° (253.28°)	-	2800	230	N52 38 26.52 W000 47 47.68	HOLD	
Wittering RNP RWY 07 via OCJUB											
Desig	Seq Nbr	Path Terminator	WPt Name	Fly-over	Course/Track °M (°T)	Turn Direction	Level Constraint	Speed Constraint	Co-ordinates	Rmks and Dist to MAPt	
RW07L	001	IF	OCJUB	-	-	-	2800	230	N52 38 26.52 W000 47 47.68	IAF	
RW07L	002	TF	XT07I	-	162° (162.96°)	LEFT	1900	230	N52 33 40.06 W000 45 23.63	IF/ 10nm	
RW07L	003	TF	XT07F	-	072° (072.99°)	-	1900	230	N52 35 08.29 W000 37 28.62	FAF/ 4.95nm	
RW07L	004	TF	RW07	Y	072° (073.10°)	-	-	230	N52 36 34.27 W000 29 42.44	MAPt	
RW07L	005	CF	XTM01	-	072° (073.20°)	LEFT	-	230	N52 38 00.59 W000 21 51.09	-	
RW07L	006	TF	XTM02	-	342° (343.31°)	LEFT	2500	230	N52 42 47.49 W000 24 12.78	-	
RW07L	007	TF	OCJUB	Y	252° (253.28°)	-	2800	230	N52 38 26.52 W000 47 47.68	HOLD	
Wittering RNP RWY 07 via AZPEW											
Desig	Seq Nbr	Path Terminator	WPt Name	Fly-over	Course/Track °M (°T)	Turn Direction	Level Constraint	Speed Constraint	Co-ordinates	Rmks and Dist to MAPt	
RW07C	001	IF	AZPEW	-	-	-	2800	230	N52 32 12.16 W000 53 13.46	IAF	
RW07C	002	TF	XT07I	-	072° (072.89°)	-	1900	230	N52 33 40.06 W000 45 23.63	IF/ 10nm	
RW07C	003	TF	XT07F	-	072° (072.99°)	-	1900	230	N52 35 08.29 W000 37 28.62	FAF/ 4.95nm	
RW07C	004	TF	RW07	Y	072° (073.10°)	-	-	230	N52 36 34.27 W000 29 42.44	MAPt	
RW07C	005	CF	XTM01	-	072° (073.20°)	LEFT	-	230	N52 38 00.59 W000 21 51.09	-	
RW07C	006	TF	XTM02	-	342° (343.31°)	LEFT	2500	230	N52 42 47.49 W000 24 12.78	-	
RW07C	007	TF	OCJUB	Y	252° (253.28°)	-	2800	230	N52 38 26.52 W000 47 47.68	HOLD	

© UK MOD Crown Copyright 2026. No 1 AIDU is not responsible for, and claims no right to, the content or accuracy of 3rd party documents/information.

WITTERING

IAP CODING TABLE Rwy 07

IAP CODING TABLES Rwy 25 via ETCAG/MIFEW WITTERING

EGXT/- ENGLAND

Changes: Annual Maintenance

No 1 AIDU Last Amended 20 APR 26

Elev 274		Var 1°E								11 JUN 26	L4
Wittering RNP RWY 25 via ETCAG											
Desig	Seq Nbr	Path Terminator	WPt Name	Fly-over	Course/Track °M (°T)	Turn Direction	Level Constraint	Speed Constraint	Co-ordinates	Rmks and Dist to MAPt	
RW25R	001	IF	ETCAG	-	-	-	2500	230	N52 44 21.99 W000 15 36.58	IAF	
RW25R	002	TF	XT25I	-	162° (163.33°)	RIGHT	1900	230	N52 39 35.01 W000 13 15.25	IF/ 9nm	
RW25R	003	TF	XT25F	-	252° (253.36°)	-	1900	230	N52 38 26.93 W000 19 28.76	FAF/ 5.04nm	
RW25R	004	TF	RW25	Y	252° (253.27°)	-	-	230	N52 36 59.73 W000 27 24.07	MAPt	
RW25R	005	CF	XTM03	-	252° (253.17°)	LEFT	-	230	N52 35 44.31 W000 34 12.42	-	
RW25R	006	TF	XTM04	-	162° (162.94°)	LEFT	1000	230	N52 31 34.38 W000 32 06.69	-	
RW25R	007	TF	XTM05	-	110° (110.51°)	LEFT	2000	230	N52 29 47.13 W000 24 18.20	-	
RW25R	008	TF	XTM06	-	070° (070.88°)	LEFT	2000	230	N52 32 48.65 W000 09 54.95	-	
RW25R	009	TF	MIFEW	Y	027° (028.23°)	-	2700	230	N52 37 12.50 W000 06 02.12	HOLD	
Wittering RNP RWY 25 via MIFEW											
Desig	Seq Nbr	Path Terminator	WPt Name	Fly-over	Course/Track °M (°T)	Turn Direction	Level Constraint	Speed Constraint	Co-ordinates	Rmks and Dist to MAPt	
RW25C	001	IF	MIFEW	-	-	-	2700	230	N52 37 12.50 W000 06 02.12	IAF	
RW25C	002	TF	XT25I	-	297° (298.45°)	-	1900	230	N52 39 35.01 W000 13 15.25	IF/ 9nm	
RW25C	003	TF	XT25F	-	252° (253.36°)	-	1900	230	N52 38 26.93 W000 19 28.76	FAF/ 5.04nm	
RW25C	004	TF	RW25	Y	252° (253.27°)	-	-	230	N52 36 59.73 W000 27 24.07	MAPt	
RW25C	005	CF	XTM03	-	252° (253.17°)	LEFT	-	230	N52 35 44.31 W000 34 12.42	-	
RW25C	006	TF	XTM04	-	162° (162.94°)	LEFT	1000	230	N52 31 34.38 W000 32 06.69	-	
RW25C	007	TF	XTM05	-	110° (110.51°)	LEFT	2000	230	N52 29 47.13 W000 24 18.20	-	
RW25C	008	TF	XTM06	-	070° (070.88°)	LEFT	2000	230	N52 32 48.65 W000 09 54.95	-	
RW25C	009	TF	MIFEW	Y	027° (028.23°)	-	2700	230	N52 37 12.50 W000 06 02.12	HOLD	

© UK MOD Crown Copyright 2026. No 1 AIDU is not responsible for, and claims no right to, the content or accuracy of 3rd party documents/information.

WITTERING IAP CODING TABLES Rwy 25 via ETCAG/MIFEW

IAP CODING TABLE Rwy 25 via AVGAF

WITTERING

EGXT/- ENGLAND

Changes: Annual Maintenance

No 1 AIDU Last Amended 20 APR 26

Elev 274		Var 1°E								11 JUN 26	L5
Wittering RNP RWY 25 IAP via AVGAF											
Desig	Seq Nbr	Path Terminator	WPt Name	Fly-over	Course/Track °M (°T)	Turn Direction	Level Constraint	Speed Constraint	Co-ordinates	Rmks and Dist	
RW25L	001	IF	AVGAF	-	-	-	<u>2500</u>	230	N52 34 47.98 W000 10 54.41	IAF	
RW25L	002	TF	XT25I	-	342° (343.39°)	LEFT	<u>1900</u>	230	N52 39 35.01 W000 13 15.25	IF/ 9nm	
RW25L	003	TF	XT25F	-	252° (253.36°)	-	1900	230	N52 38 26.93 W000 19 28.76	FAF/ 5.04nm	
RW25L	004	TF	RW25	Y	252° (253.27°)	-	-	230	N52 36 59.73 W000 27 24.07	MAPt	
RW25L	005	CF	XTM03	-	252° (253.17°)	LEFT	-	230	N52 35 44.31 W000 34 12.42	-	
RW25L	006	TF	XTM04	-	162° (162.94°)	LEFT	<u>1000</u>	230	N52 31 34.38 W000 32 06.69	-	
RW25L	007	TF	XTM05	-	110° (110.51°)	LEFT	<u>2000</u>	230	N52 29 47.13 W000 24 18.20	-	
RW25L	008	TF	XTM06	-	070° (070.88°)	LEFT	<u>2000</u>	230	N52 32 48.65 W000 09 54.95	-	
RW25L	009	TF	MIFEW	Y	027° (028.23°)	-	2700	230	N52 37 12.50 W000 06 02.12	HOLD	

© UK MOD Crown Copyright 2026. No 1 AIDU is not responsible for, and claims no right to, the content or accuracy of 3rd party documents/information.

WITTERING

IAP CODING TABLE Rwy 25 via AVGAF

MID 1&2 (RNAV1 DME/DME or GNSS) Rwy 07/25 CODING TABLES WITTERING

EGXT/- ENGLAND

Changes: Annual Maintenance

No 1 AIDU Last Amended 20 APR 26

Elev 274 Var 1°E 11 JUN 26 L6

Wittering RWY 07 MID via ICHAN

Desig	Seq Nbr	Path Terminator	Wpt Name	Fly-over	Course/Track °M (°T)	Distance (NM)	Turn Direction	Level Constraint	Speed Constraint	Co-ordinates	Navigation Performance
ICHAN07	001	CF	ICHAN	N	072° (073·17°)	11·6	-	3500	-	N52 40 19·99 W000 09 07·32	RNAV1

Wittering RWY 07 MID via OSLUK

Desig	Seq Nbr	Path Terminator	Wpt Name	Fly-over	Course/Track °M (°T)	Distance (NM)	Turn Direction	Level Constraint	Speed Constraint	Co-ordinates	Navigation Performance
OSLUK07	001	CF	OSLUK	N	072° (073·17°)	6·2	-	3500	-	N52 38 47·32 W000 17 37·11	RNAV1

Wittering RWY 25 MID via ACDOF

Desig	Seq Nbr	Path Terminator	Wpt Name	Fly-over	Course/Track °M (°T)	Distance (NM)	Turn Direction	Level Constraint	Speed Constraint	Co-ordinates	Navigation Performance
ACDOF25	001	CF	ACDOF	N	252° (253·20°)	6·1	-	3500	-	N52 34 47·45 W000 39 21·44	RNAV1

Wittering RWY 25 MID via AGWOD

Desig	Seq Nbr	Path Terminator	Wpt Name	Fly-over	Course/Track °M (°T)	Distance (NM)	Turn Direction	Level Constraint	Speed Constraint	Co-ordinates	Navigation Performance
AGWOD25	001	CF	AGWOD	N	252° (253·20°)	11·4	-	3500	-	N52 33 14·71 W000 47 39·55	RNAV1

© UK MOD Crown Copyright 2026. No 1 AIDU is not responsible for, and claims no right to, the content or accuracy of 3rd party documents/information.

WITTERING MID 1&2 (RNAV1 DME/DME or GNSS) Rwy 07/25 CODING TABLES

INTENTIONALLY BLANK